

53 ft 2018 Marlow 53E

\$2,050,000

Stuart, FL



Boat Details

Make:	Marlow	Hull Material:	Fiberglass
Model:	53E	Beam:	17 ft 3 in
Year:	2018	Boat Location:	Stuart, FL
Length:	53 ft	Guest Cabins:	2
Price:	\$2,050,000	Guest Heads:	2
Condition:	Used	Fuel Type:	Diesel
Class:	Motor Yacht	Max Speed:	24.5 kn



Marlow Sales Department | Marlow Marine Sales, Inc.

Marlow Marine Sales, Inc., Snead Island, Florida, United States

Tel: +1 (941) 729-3370 Fax: 941-729-4955

sales@marlowmarine.com

Description

Mist has been continuously updated and upgraded by her current owners as the listing below will show. She has been cruised from Maine to the Bahamas and is set up to continue doing so without sacrifice.

The 53 Explorer is one of the most popular models from Marlow, she represents the perfect balance of luxury cruising, performance, and long-range capability in a highly sought-after semi-enclosed bridge design. Built with Marlow's signature lightweight composite construction and efficient hull design, this exceptionally maintained yacht delivers impressive fuel economy, confident offshore handling, and an elegant ride. Her spacious layout, rich teak interior, panoramic salon windows, and comfortable flybridge create a refined cruising experience equally suited for extended passagemaking or comfortable liveaboard use. Powered by dependable twin diesel engines and equipped with Garmin electronics, Naiad fin stabilizers, and numerous upgrades, this 53E is turnkey and ready for her next owner's adventures.

Mist was just hauled out of the water in Stuart, FL getting her offseason services completed and has indoor air conditioned Hurricane Cat 5 storage secured for the summer. Reach out to the listing broker today to schedule an in-person showing.

Information & Features

Caterpillar 12.9 (Engine 1)

Engine Type:	Inboard	Power:	850 hp
Fuel Type:	Diesel		
Engine Hours:	975		

Caterpillar 12.9 (Engine 2)

Engine Type:	Inboard	Power:	850 hp
Fuel Type:	Diesel		
Engine Hours:	945		

Dimensions

LOA:	61 ft	Min Draft:	4 ft 6 in
LWL:	53 ft		
Beam:	17 ft 3 in		

Weights

Displacement:	66,000 lb
---------------	------------------

Speed

Cruising Speed:	18 kn
Max Speed:	24.5 kn

Tanks

Fuel:	1 x 1,200 gal
Fresh Water:	1 x 270 gal
Holding:	1 x 70 gal

Accommodations

Guest Cabins: **2**

Guest Heads: **2**

Other

Flag Of Registry: **United States**

Highlights and Recent Upgrades

- Owner/Operator layout with laundry room and access to engine room from the Primary Stateroom
- Semi-enclosed bridge with air conditioning
- Freedom Lift
- 13.5kW and 17kW Onan Generators
- Bow and Stern Thrusters
- Yacht Controller handheld remote docking system
- Bluewater Watermaker
- Naiad Stabilizers
- Washer and Dryer
- Painted Hull (Kingston Grey Awl Grip)
- All lights LED for low amp draw no heat
- Custom sunshade canvas for aft cockpit and flybridge sundeck

2021-2022

- New Spurs line cutters
- New oven and dishwasher
- New Rocna anchor
- New Miele Dryer
- New 220v Kenyon induction cooktop
- Custom anchor windlass mount
- New mast to accommodate New KVH HD7 TV radome
- Custom Lexan backsplash in galley
- Custom folding mattress

2023-2024

- New house batteries
- New Port generator 17kW
- New trim tab actuators
- Starlink high performance antenna
- Installed air conditioning on the flybridge
- Installed ASEA DB12 Isolation transformers
- New Tides Marine shaft seals
- Reconfigured salon to accommodate recliners on the port side
- Converted bunk area to storage with cooler tie downs, etc.

2024-2025

- New thruster/windlass batteries
- New generator start batteries
- New fridge and freezer in laundry room
- Rebuilt Freedom Lift

2026

- New air conditioning chillers

Hull and Deck

- Kingston Grey AwlGrip painted hull
- White gelcoat superstructure
- Two-tone grey and white non-skid decks
- **Low maintenance exterior package** with ZERO exterior varnished wood to maintain
- White caprails with stainless steel handrails, cleats, hawses and hardware
- Molded fixed swim platform with swim ladder
- Access to Lazarette from swim platform
- Cockpit shower with hot and cold water
- **Freedom Lift** hydraulic dinghy lift
- Wide side walk-around decks provide easy access from bow to stern
- Laminated tinted glass windows the 3M Hurricane Shield 11mm thick!
- Inset handrails and boathook storage
- Quick HR5 anchor windlass with custom stainless steel mounting platform **NEW 2023**
- Rocna 55kg galvanized anchor with 300' galvanized chain **NEW 2023**
- Fresh and salt water washdowns on bow
- (2) Anchor lockers
- Storage in portuguese bow area accessed from walkway
- Storage under stairs to FB in aft cockpit

Flybridge and Sundeck

- Semi-enclosed flybridge with EZ2CY hard "glass" and canvas side and aft enclosure
- Comfortable seating for up to 8 people
- (3) Tinted glass windshield windows with windshield wipers
- V-Cool window tint on forward windows
- Access to bridge via interior stairway by the galley or exterior from the aft cockpit
- (2) Pompanette Platinum Series helm chairs with light grey Ultraleather and grey painted posts
- Overhead down lighting and aft flood lights
- 12v fans
- Dedicated air conditioner for Flybridge
- L-settee to starboard with storage below and traingular table
- Bench settee to port with storage below
- Sundeck has a bar/grill area forward with Kenyon electric grill, refrigerator and stainless steel basin sink
- Custom mounted dock box centerline for extra storage
- Custom sunshade with stainless steel poles
- Viking 6 person liferaft mounted port side on stainless mount (expired)

Helm and Electronics

- (2) Garmin GPSmap 7215 Chartplotters
- Garmin enclosed array radar
- Depth sounder
- Garmin VHF radio with remote speaker
- Garmin GHC10 Autopilot
- Garmin GMI20 instrument display
- Garmin Sim card reader
- CAT LED engine displays
- Rudder angle indicator
- ACR Searchlight
- Chart locker
- Tides Marine SmartSeal Indicator
- Exalto windshield wiper control
- Stainless steel Marlow helm wheel
- Glendinning throttle controls
- Backup steering joystick
- Bennett trim tabs
- Lewmar bow and stern thruster controls
- Yacht controller control
- Naiad stabilizer control
- Outback power control
- Battery "test" indicator
- Fireboy automatic fire suppression system indicator
- Custom SeaDek on dash to reduce glare
- 12v fans

Aft Cockpit

- Forward facing bench seat aft with storage below
- White painted table with stainless steel pedestals
- Aft docking station folds out on starboard side (throttles and bow/stern thrusters)
- Side and aft access doors for easy access on and off the dock in any situation
- Bi-color down lighting (white/blue)
- Dual access doors open to the salon for indoor/outdoor entertaining
- Inset stairs to flybridge with sliding door/latch (no ladders!)
- Custom aft sunshades - full mesh sun enclosure on all 3 sides with zipper access doors
- Stereo speakers

Salon

- Dual door access to the salon from the aft cockpit
- L settee to starboard with easy access storage below (seat and backs raise up on gas struts)
- (2) Swivel recliners to port with weighted bases
- Flatscreen LED SmartTV with Bose soundbar
- Electronics cabinet under TV
- Icemaker and fridge
- Teak and holly sole with satin teak furniture and joinery
- LED rope lighting
- Overhead LED lights on dimmers
- Teak bookshelves
- Breaker panel to port at the base of the steps to the Galley

Galley

- Three steps up from the salon is the galley and large U-shaped dinette seating area
- Galley is U-shaped and to starboard with lots of natural light and tons of storage above and below counter
- (2) SubZero fridge/freezer drawer units **NEW Freezers 2025**
- Two burner 220v Kenyon induction cooktop **NEW 2022**
- Bosch SilencePlus Dishwasher **NEW 2022**
- Bosch full size oven **NEW 2022**
- Santa Maria Vetrostone countertops
- Franke stainless steel undermount single basin sink with Grohe faucet
- 110v outlet plug in overhead storage for microwave if desired
- Dinette is forward and to port with ultraleather seats and a varnished teak table
- V-Cool window tint on forward windows to the side doors
- Port and Starboard exterior doors for access to the sidedecks and foredeck
- Teak staircase to the flybridge to port
- Teak staircase to down below accommodations to starboard

Accommodations

Accommodations below feature 2 staterooms, each with their own private full head with toilet, sink Grohe fixtures and large stall shower. There is a bunk area to starboard at the foot of the companionway stairs that sleep 2 more in 6'+ bunks. The current owners have converted this bunk area to storage. The entire area is beautifully finished with teak and holly soles and satin teak bulkheads/furniture.

Primary Stateroom

- Located aft and runs the full beam including the head
- King size berth athwartship with custom mattress **NEW 2022**
- (2) Cedar lined hanging lockers and tons of storage throughout
- (4) large drawers under bed
- Bureau with 5 drawers
- Bedside tables either side with (1) drawer and (2) lockers each side
- LED TV
- Shoji screens over berth and custom light diffusers in the windows
- Dimmable overhead lighting
- Reading lamps
- Direct access to laundry room and engine room
- Head has huge counter space, fold away mirror, lots of storage and a large stall shower with seat

VIP Stateroom

- Located forward with a centerline berth
- (4) large under berth drawers and (2) lockers
- (2) cedar lined hanging lockers
- Open shelving P&S
- LED TV
- Overhead hatch
- Access to VIP head via private door, also a 2nd day access from companionway

Laundry Room

- Direct access aft of the master stateroom is the laundry room "corridor" with the engine room access on the other side
- Miele washer and dryer - Dryer **NEW 2022**
- Refrigerator **NEW 2025**
- Freezer **NEW 2025**
- Tons of storage above and below counter

Mechanical and Electrical

Access to the engine room is via the laundry room pass through from the master stateroom. Full head height engine room. Access to the lazarette is via a watertight bulkhead door from the engine room or the swim platform.

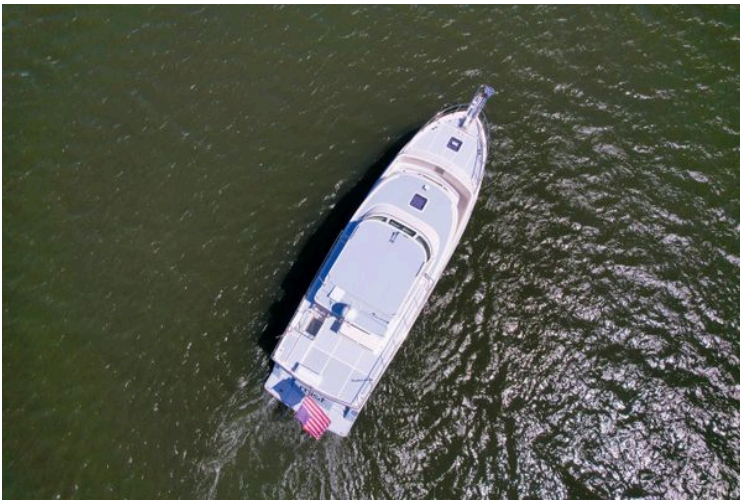
- Twin Caterpillar C12.9 850hp diesel engines with 975 and 945 hours
- **"1000" hour service** has been ordered with the yard and will be completed
- 17kW Onan generator with 454 hours **NEW 2022**
- 13.5kW Onan generator with 2305 hours
- Lifeline AGM Batteries all replaced relatively recently
- Dometic chilled water air conditioners - 3 chillers all **NEW 2026**
- Bluewater Watermaker deposit has been paid for replacement **NEW 2026**

Exclusions

- There is not a tender that conveys with the sale of this vessel
- Any tools, spare parts or other gear found onboard or seen in photos/video have been left there by the Sellers and will convey with the vessel.
- Vessel is equipped with: Sheets, pillows, towels, cups, some cookware, and cooking knives. Tons of spare parts and filters for the major systems and equipment. You could provision and leave on short notice quite easily.
- Spare propellers
- Spare bow thruster motor
- The liferaft expired in 2024

Disclaimer

East Coast Yacht Sales offers the details of this vessel in good faith but cannot guarantee or warrant the accuracy of this information nor warrant the condition of the vessel. A buyer should instruct his agents, or his surveyors, to investigate such details as the buyer desires validated. This vessel is offered subject to prior sale, price change, or withdrawal without notice.



Aerial view of 2018 Marlow 53E yacht cruising on open water.



2018 Marlow 53E yacht deck with stairs and ocean view.



Control panel on 2018 Marlow 53E yacht deck, featuring throttle and joystick controls.



Outdoor seating area on 2018 Marlow 53E yacht with ocean view and table.



Luxury Marlow 53E yacht deck with seating, table, and ocean view, 2018 model.



Aft deck of 2018 Marlow 53E yacht with table, seating, and ocean view.



Stern view of 2018 Marlow 53E yacht cruising on a scenic waterway.



Staircase on 2018 Marlow 53E yacht with sleek design and stainless steel railings.



Side view of 2018 Marlow 53E yacht with stairs and waterway backdrop.



Flybridge of 2018 Marlow 53E yacht with ocean view and safety equipment.



Marlow 53E yacht deck with American flag, cruising on open water, 2018 model.



Deck view of 2018 Marlow 53E yacht with American flag, cruising on open water.



2018 Marlow 53E yacht on water, featuring enclosed helm and navigation equipment.



Outdoor kitchen on 2018 Marlow 53E yacht with sink and grill.



2018 Marlow 53E yacht deck with helm station and ocean view.



Marlow 53E 2018 yacht deck with railing, overlooking serene water and blue sky.



Interior view of 2018 Marlow 53E yacht cockpit with dual captain chairs and navigation equipment.



Cockpit view of 2018 Marlow 53E yacht with navigation screens and steering wheel.



Cockpit of 2018 Marlow 53E yacht with advanced navigation and control systems.



Luxurious helm of 2018 Marlow 53E yacht with advanced navigation systems and ocean view.



Cockpit view of 2018 Marlow 53E yacht with navigation equipment and scenic waterway.



Control panel of a 2018 Marlow 53E yacht with roll stabilizer system.



Cockpit of 2018 Marlow 53E yacht with navigation controls and scenic water view.



Cockpit view from a 2018 Marlow 53E yacht overlooking a serene waterfront.



Luxurious interior of 2018 Marlow 53E yacht with ocean view and comfortable seating.



Luxurious interior of 2018 Marlow 53E yacht with striped seating and scenic water view.



Luxurious interior of 2018 Marlow 53E yacht with striped seating and ocean view.



2018 Marlow 53E yacht "Mist" cruising on a sunny day near a bridge.



Marlow 53E yacht cruising on a sunny day with a bridge in the background.



Bow view of 2018 Marlow 53E yacht cruising on a sunny day.



2018 Marlow 53E yacht deck with ocean view and clear blue sky.



2018 Marlow 53E yacht deck with ocean view under blue sky.



Bow view of 2018 Marlow 53E yacht on open water under blue sky.



2018 Marlow 53E yacht on open water under clear blue sky.



Bow of 2018 Marlow 53E yacht with anchor windlass system.



Bow of 2018 Marlow 53E yacht with anchor chain and winch system.



Side deck of 2018 Marlow 53E yacht with fishing rods, overlooking water and bridge.



Side view of 2018 Marlow 53E yacht with polished details and scenic water backdrop.



Luxurious 2018 Marlow 53E yacht interior with elegant wood finishes and scenic ocean view.



Luxurious interior of 2018 Marlow 53E yacht with plush seating and elegant wood finishes.



Luxurious interior of 2018 Marlow 53E yacht with elegant wood finishes and comfortable seating.



Interior of 2018 Marlow 53E yacht with two gray recliners and a flat-screen TV.



Luxurious 2018 Marlow 53E yacht interior with recliners, TV, and scenic water views.



Interior view of 2018 Marlow 53E yacht, showcasing elegant wood finish and ocean view.



Luxurious interior of 2018 Marlow 53E yacht with plush seating and elegant wood finishes.



Luxurious interior of 2018 Marlow 53E yacht with elegant wood finish and cozy seating.



Interior of 2018 Marlow 53E yacht with wood paneling and granite countertop.



Luxurious interior of 2018 Marlow 53E yacht with elegant wood cabinetry and decorative vases.



Luxurious 2018 Marlow 53E yacht interior with elegant wood finishes and panoramic ocean views.



Luxurious Marlow 53E 2018 yacht kitchen with wood cabinetry and granite countertops.



Luxurious kitchen interior of 2018 Marlow 53E yacht with wooden cabinetry and granite countertops.



Interior of 2018 Marlow 53E yacht with wood finish and water view.



Luxurious 2018 Marlow 53E yacht interior with modern kitchen and wooden cabinetry.



Modern oven in Marlow 53E yacht, 2018 model, set to 350° F, with wood paneling.



Luxurious Marlow 53E 2018 yacht kitchen with elegant countertops and wooden cabinetry.



Luxurious Marlow 53E 2018 yacht interior with elegant wood cabinetry and spacious seating area.



Luxurious 2018 Marlow 53E yacht interior with elegant wood finishes and modern kitchen amenities.



Luxurious interior of 2018 Marlow 53E yacht with plush seating and panoramic windows.



Luxurious Marlow 53E yacht interior with leather seating and wooden table, overlooking serene waters.



Interior of 2018 Marlow 53E yacht with wooden stairs and scenic water view.



Luxurious 2018 Marlow 53E yacht interior with modern kitchen and wooden finishes.



Luxurious interior of 2018 Marlow 53E yacht with wooden stairs and scenic window view.



Luxurious 2018 Marlow 53E yacht interior with elegant dining area and modern kitchen.



Luxurious interior of 2018 Marlow 53E yacht with wooden stairs and cozy cabin.



Luxurious cabin interior of 2018 Marlow 53E yacht with elegant wood finish.



Luxurious Marlow 53E 2018 yacht bedroom with elegant wood finish and cozy bedding.



Luxurious cabin interior of 2018 Marlow 53E yacht with elegant wood finish.



Luxurious bathroom interior of 2018 Marlow 53E yacht with wooden cabinets and marble countertop.



Luxurious Marlow 53E yacht bathroom with ocean view, elegant wood accents, and modern fixtures.



Luxurious Marlow 53E 2018 yacht bathroom with ocean view, elegant wood finishes, and modern fixtures.



Shower area in 2018 Marlow 53E yacht, featuring modern fixtures and a sleek design.



Luxurious cabin interior of 2018 Marlow 53E yacht with cozy bed and wooden finish.



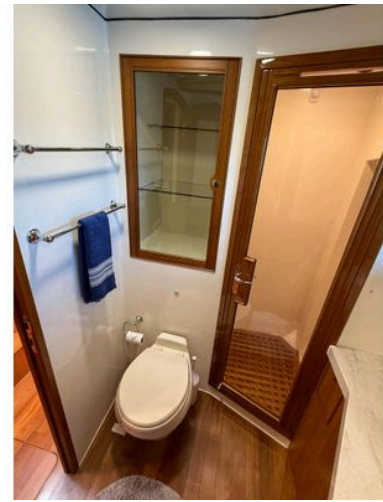
Luxurious cabin interior of 2018 Marlow 53E yacht with cozy bed and wooden finish.



Luxurious Marlow 53E 2018 yacht interior with ensuite bathroom and mounted TV.



Luxurious Marlow 53E 2018 yacht bathroom with wood accents and ocean view window.



Luxurious bathroom in 2018 Marlow 53E yacht with wooden accents and modern fixtures.



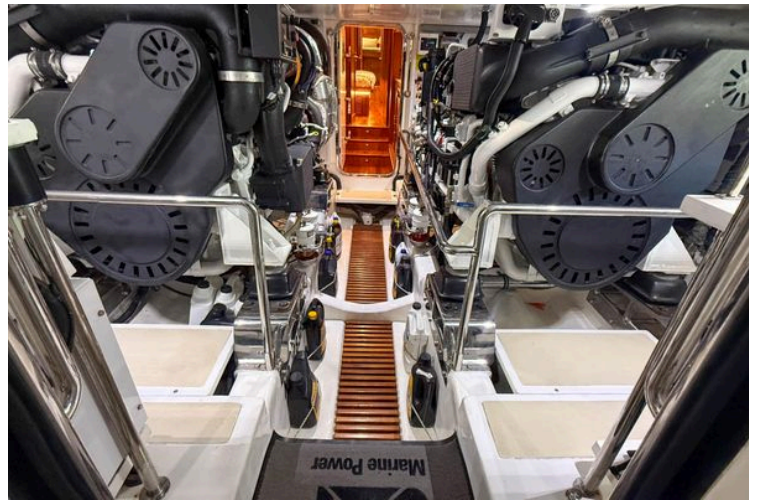
Luxurious wooden interior of 2018 Marlow 53E yacht, featuring elegant cabinetry and cozy hallway.



Luxurious wooden interior of 2018 Marlow 53E yacht with modern amenities and porthole door.



Laundry area on 2018 Marlow 53E yacht with washer, dryer, and porthole door.



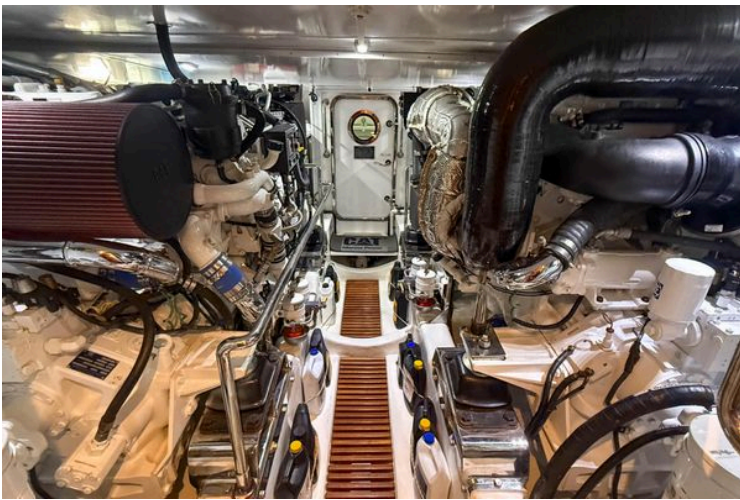
Engine room of 2018 Marlow 53E yacht, showcasing dual engines and mechanical systems.



Engine room of 2018 Marlow 53E yacht, featuring advanced marine power systems.



Engine room of a 2018 Marlow 53E yacht, featuring tools and maintenance supplies.



Engine room of a 2018 Marlow 53E yacht, showcasing detailed machinery and components.



Engine room of a 2018 Marlow 53E yacht, featuring CAT Marine Power components.



Engine room of 2018 Marlow 53E yacht with Cummins Onan generator and safety equipment.



Engine room of 2018 Marlow 53E yacht with equipment and storage shelves.



2018 Marlow 53E yacht with open hatch, docked by the water.



Stern view of 2018 Marlow 53E yacht "Mist" on water, Dover DE.



Stern view of 2018 Marlow 53E yacht cruising on water, showing wake and swim platform.



Electrical control panel on a 2018 Marlow 53E yacht, featuring switches and displays.



2018 Marlow 53E yacht cruising on a sunny day in open waters.