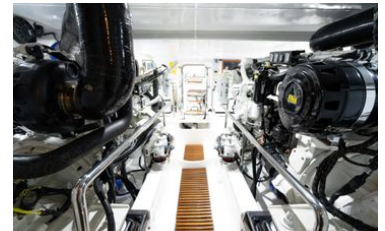


57 ft 2015 Marlow Explorer 49E, MISS AUDRY

US\$1,595,000

Palmetto, Florida, United States



Boat Details

Make:	Marlow	Hull Material:	Composite
Model:	Explorer 49E	Beam:	17 ft 3 in
Year:	2015	Boat Location:	Palmetto, Florida, United States
Length:	57 ft 6 in	Name:	MISS AUDRY
Price:	US\$1,595,000	Fuel Type:	Diesel
Condition:	Used	Max Draft:	4 ft 6 in
Class:	Motor Yacht		



Marlow Sales Department | Marlow Marine Sales, Inc.

Marlow Marine Sales, Inc., Snead Island, Florida, United States

Tel: +1 (941) 729-3370 Fax: 941-729-4955

sales@marlowmarine.com

Description

“Miss Audry” presents an exceptional opportunity to step into the yachting lifestyle and create unforgettable moments with family and friends. Whether you’re harbor-hopping through New England, enjoying sunset cruises along Florida’s Gulf Coast, or embarking on extended journeys to the Caribbean, the Marlow Explorer 49E delivers both elegance and performance in every setting.

Designed for versatility and long-range cruising, she is equally at home on a leisurely “Great Loop” adventure, coastal exploration of the Eastern Seaboard, or voyages to the Canadian Maritimes and Great Lakes. Her semi-displacement hull with twin strut keels provides remarkable efficiency. Cruise economically at 8 knots with approximately 1 nautical mile per gallon or increase speed to 23+ knots when covering greater distances.

“Miss Audry” is a true owner-operator yacht, thoughtfully engineered with user-friendly systems that make handling simple and enjoyable. Step aboard and you’re immediately welcomed by expansive interior volume, panoramic 360-degree views, and large salon windows that fill the space with natural light, creating a bright, inviting atmosphere underway or at anchor.

The highly sought-after two-stateroom, two-head layout comfortably accommodates family and guests. The pilothouse features a gourmet galley and a spacious dinette. Perfect for gathering while cruising. The salon offers refined comfort with a smart LED TV, twin chairs, and a built-in settee with storage, easily doubling as an additional berth when needed. Every detail evokes the feeling of an elegant waterfront home.

Craftsmanship is evident throughout, highlighted by a beautifully executed teak interior built from a single, hand-selected Burmese teak tree, ensuring consistent grain and tone across the vessel. Satin-finished teak joinery is complemented by rich, high-gloss teak and ebony flooring, creating a timeless and luxurious aesthetic.

Owning a Marlow Explorer means owning one of the most respected and refined expressions of yachting, widely regarded by seasoned yachtsmen as among the finest “marine real estate” in the world.

Information & Features

Caterpillar C12 (Engine 1)

Engine Type:	Inboard	Power:	715 hp
Fuel Type:	Diesel		
Engine Hours:	1475		

Caterpillar C12 (Engine 2)

Engine Type:	Inboard	Power:	715 hp
Fuel Type:	Diesel		
Engine Hours:	1475		

Dimensions

LOA:	57 ft 6 in	Max Draft:	4 ft 6 in
LWL:	49 ft		
Beam:	17 ft 3 in		

Highlights

- Awl craft painted whisper grey hull and Matterhorn white painted superstructure
- Upgraded twin CAT 715HP C-12 Diesel engines (1475 Hrs)
- 15HP Lewmar Thrusters
- Upgraded Extended Composite Hardtop
- Upgraded LED lighting
- Upgraded exterior stainless package
- Chilled water Air conditioning
- Glendenning Cable masters
- Twin ONAN generators
- SIMRAD Electronics Suite
- Bose Home Theatre with JL speakers
- Teak & Ebony high gloss floors
- 2.5 stateroom layout with king size master berth, VIP and buddy berth in companionway
- Yacht Controller

Cockpit & Deck

The cockpit is thoughtfully designed for both relaxation and functionality, offering convenient access to fishing rod holders while easily transforming into an inviting alfresco dining space. A beautifully crafted teak table with ebony inlay and a fold-out leaf that adapts effortlessly to accommodate guests, making it ideal for entertaining on the water.

Built with both comfort and safety in mind, the Marlow Explorer features a raised pilothouse, Portuguese bridge, and wide, secure side decks. These elements work together to deliver exceptional stability and confidence in a wide range of sea conditions. The side decks are well protected by solid fiberglass bulwarks, topped with elegant teak cap rails, tall railings provide safety and security on the water.

Forward, a robust stainless steel anchor system is equipped with all-chain rode and a dual windlass, ensuring reliable anchoring wherever your travels take you. A heavy-duty oval stainless steel bow rail further enhances safety while complementing the yacht's refined profile.

Both the pilothouse and flybridge provide commanding sightlines and excellent visibility, offering ideal positions for navigation as well as comfortable social spaces for guests to gather and enjoy the journey.

- Open Fly bridge with extended Hardtop
- Fresh and raw Water wash Down Bow and Stern
- Transom Door for easy engine room access
- Fuel fill Port and Stbd
- Black water dock pump out Port and Stbd
- Cockpit pop out docking station
- Portuguese bridge
- LED flood lights on hardtop and aft deck
- Sea Vision LED underwater lights
- Stainless fishing rod holders
- Upgraded stainless exterior hardware package

Salon

Upon boarding, you are welcomed through elegant double entry doors into the salon, where breathtaking panoramic views immediately set the tone for the experience onboard. Natural light pours through expansive windows, creating a bright and inviting living space.

The salon is tastefully appointed with a built-in settee, complemented by freestanding chairs and a beautifully crafted high gloss teak and ebony table. Offering both flexibility and versatility for entertaining or relaxing. The settee also features cleverly integrated lift-out storage, maximizing functionality without compromising style.

Aft to port, a custom double-shelf cabinet provides a dedicated space for hanging wine glasses and stemware, combining refined presentation with practical storage. Forward, the large Samsung LED TV is perfectly positioned for easy viewing, while the port U-Line refrigerator and starboard aft U-Line icemaker adds an extra touch of onboard luxury and convenience.

- 15" U-Line refrigerator
- U-Line icemaker
- Black Galaxy granite bar countertop
- Samsung LED Smart TV
- Bose stereo system
- 6' Settee with built in storage
- Custom high gloss teak table with Ebony inlay.
- Double entry doors
- Custom glass storage enclosure on both aft corners of salon

Galley/Pilothouse

"Miss Audry" is exceptionally well-equipped for extended cruising, featuring generous refrigeration and freezer capacity with premium Sub-Zero units to ensure provisions stay fresh. The gourmet galley is outfitted with a full suite of high-end appliances and abundant storage, allowing you to enjoy all the comforts of home while underway.

Thoughtfully designed for both functionality and comfort, the pilothouse offers port and starboard access doors, providing effortless movement throughout the vessel as well as refreshing cross-ventilation on pleasant days. At the helm, a custom-designed double-wide "love seat" invites shared moments while navigating.

Completing the space is a beautifully crafted dinette, finished in rich high-gloss teak and ebony, creating a warm and elegant setting for dining, planning the day's journey, or simply enjoying the view.

- 24" SubZero Fridge and Freezer combo drawers
- 27" Sharp convection oven
- Kenyon 3 Burner Cook top
- Sharp Convection Microwave
- Kitchen Aid Disposal
- Franke Stainless Sink with Custom granite inserts
- Black Galaxy countertops
- Lift Lid Counter Storage
- Dinette with high gloss teak and ebony table

Master Stateroom

You will be hard-pressed to find a more impressive master stateroom on any yacht under 60 feet. Positioned midship for optimal comfort and stability, this full-beam retreat features a true king-size berth, creating a spacious and inviting sanctuary for extended time aboard.

The suite is complemented by a generously sized en-suite head with a separate shower, along with a well-appointed chest of drawers and abundant storage throughout. Multiple hanging lockers and drawer space provide more than enough capacity for seasonal living, making long-term cruising both practical and comfortable.

The master stateroom also includes a custom pass-through to the engine room, offering convenient and discreet access to key systems for hands-on owners who value ease of access and efficiency onboard.

- Samsung LED TV
- Fusion Stereo System
- Twin Reading lamps
- King Berth
- Cedar Line Hanging Closets
- Teak Cabinet with Cedar Shelves
- Shoji Screens
- (4) Storage Drawers under Berth
- Walk-In Shower
- Vacuflush Head
- Cream Marfil countertops in head
- Grohe fixtures
- Custom Laundry/utility room between master and engine room
- Whirlpool Washer and Dryer
- Upgraded LED lights

VIP Stateroom

The VIP stateroom offers a comfortable retreat, perfectly suited for a couple. A well-appointed berth is complemented by generous storage, including drawers beneath the bed and matching hanging lockers to both port and starboard, providing ample space for extended stays onboard.

Entertainment is easily enjoyed with a dedicated Samsung LED TV and an independent stereo system, allowing guests to relax in privacy. Overhead and outboard, two large storage shelves offer convenient space for luggage and personal items, keeping the stateroom uncluttered and organized. A centrally located overhead hatch with an integrated shade and bug screen adds natural light and fresh air to the ambiance.

The spacious VIP head, located to port, features dual access from both the stateroom and the companionway for added convenience. Inside, a large separate shower and oversized portlight create a bright and comfortable environment for guests.

- Lighted swivel vanity mirror in head
- Cream Marfil countertop
- Grohe fixtures
- Samsung LED TV
- Upgraded LED lights

Flybridge

The flybridge offers an exceptional setting for fair-weather cruising and entertaining, combining comfort, visibility, and thoughtful design. Premium Pompanette helm seats provide outstanding support for extended passages, ensuring both captain and guests can enjoy the journey in complete comfort.

Easily accessible from the pilothouse via interior stairs, as well as from the aft cockpit by an exterior staircase, the flybridge is designed for seamless movement throughout the vessel. An L-shaped seating area, complemented by a fiberglass table and a convenient Frigibar (refrigerator/freezer), creates the perfect space for socializing whether underway or relaxing at the dock.

Aft, the upper deck is equipped with custom dinghy chocks, providing a secure and practical solution for tender storage while maintaining the clean, functional layout of this versatile outdoor space.

- Full Hydraulic #700lb Rotating Davit
- (2) Pompanette Platinum Signature Series Helm Chairs
- U-line Fridge with Ice Maker
- Frigibar (refrigerator/freezer)
- SIMRAD Dual 16" Multi touch displays
- SIMRAD Radar
- SIMRAD depth sounder and Transducer
- SIMRAD autopilot
- SIMRAD AIS
- SIMRAD VHF
- SIMRAD Satellite Radio

Mechanical

- Twin CAT C-12 ACERT 715HP Diesel Engines
- Onan Marine 17kW and 13.5kW Generators with custom sound enclosure
- Chilled water A/C system
- Fireboy fire suppression system
- Fresh Water Washdown in engine room
- Twin Sea Chest for Incoming Raw Water Systems
- Underwater exhaust system
- Stainless steel hot water heater
- Oil Change system
- Dual Raycor fuel filters for both engines and generators
- Redundant hydraulic steering pumps

Electrical

- Gost Security System
- Morse Electronic Controls
- Yacht Controller
- LED Lighting package
- SIMRAD NSO EVO2 Dual 16" Chart Plotters both helms
- SIMRAD 6kW Radar
- SIMRAD depth sounder and transducer
- SIMRAD autopilot
- SIMRAD AIS
- SIMRAD VHF
- SIMRAD IS40 multi-function color display
- KVH Tracvision HD7 SAT TV
- SIMRAD wireless internet
- Geosat Wi-Fi Extender
- Speco CCTV Cameras
- 50A Cable master and 50A cord receptacle at both the bow and stern
- AGM Batteries
- Large 24 volt intake and exhaust blowers in engine room
- Charles ISO Boosting transformer
- Bow/Stern Thruster: Lewmar 15HP, 24V (Controls at each station)

Tender

Boston Whaler 110 Sport w/ 25hp Mercury outboard

Exclusions

Sellers Personal Items.

Disclaimer

The Company offers the details of this vessel in good faith but cannot guarantee or warrant the accuracy of this information nor warrant the condition of the vessel. A buyer should instruct his agents, or his surveyors, to investigate such details as the buyer desires validated. This vessel is offered subject to prior sale, price change, or withdrawal without notice.



Swim platform



Swim platform



Aft deck



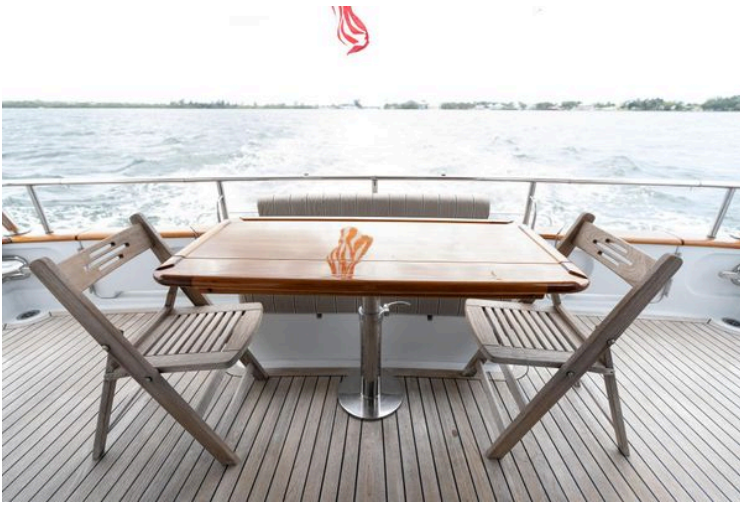
Aft deck



Aft deck



Aft deck



Aft deck



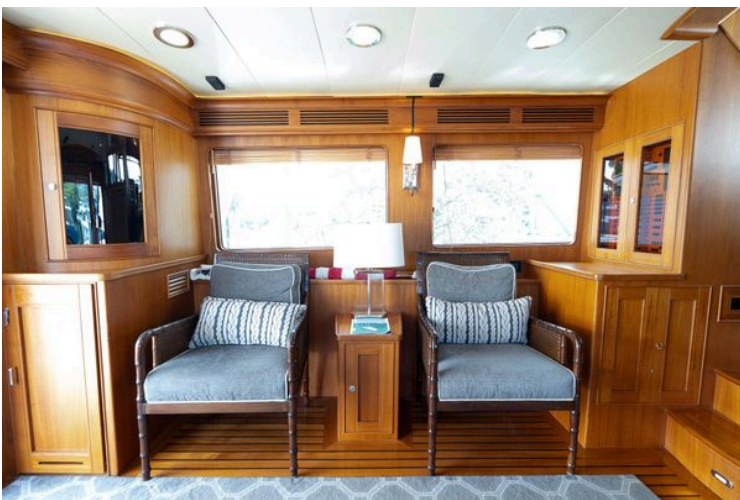
Aft deck controls



Aft deck to flybridge stairs



Salon



Salon



Salon



Galley



Galley



Galley



Galley



Galley



Pilothouse



Pilothouse



Pilothouse



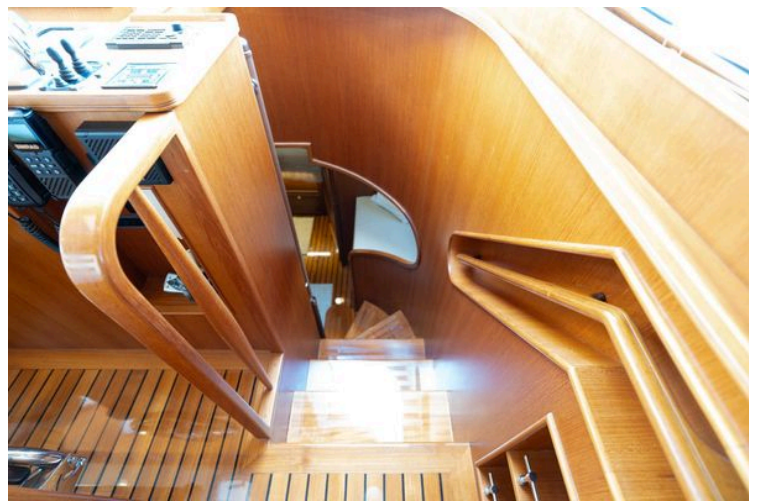
Pilothouse



Pilothouse



Pilothouse



Stairs to companionway



Buddy bunk



Buddy bunk



VIP stateroom



VIP stateroom



VIP & day head



VIP & day head



Interior of 2015 Marlow Explorer 49E yacht with wooden stairs and hallway.



Master stateroom



Master stateroom



Master stateroom



Master stateroom head



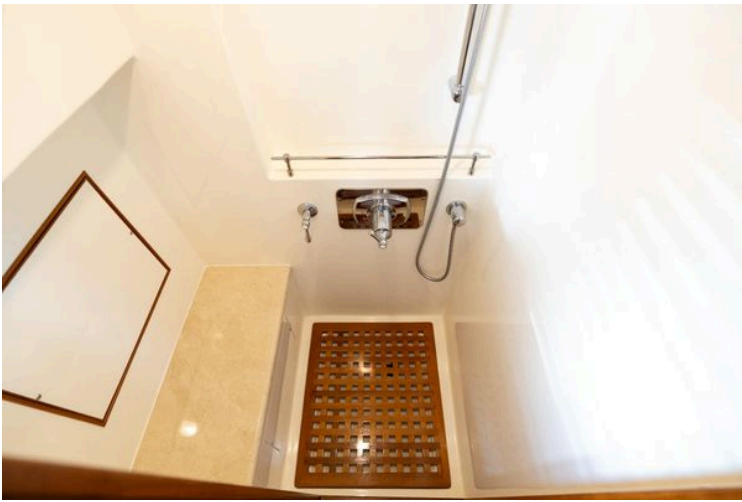
Master stateroom head



Master stateroom head



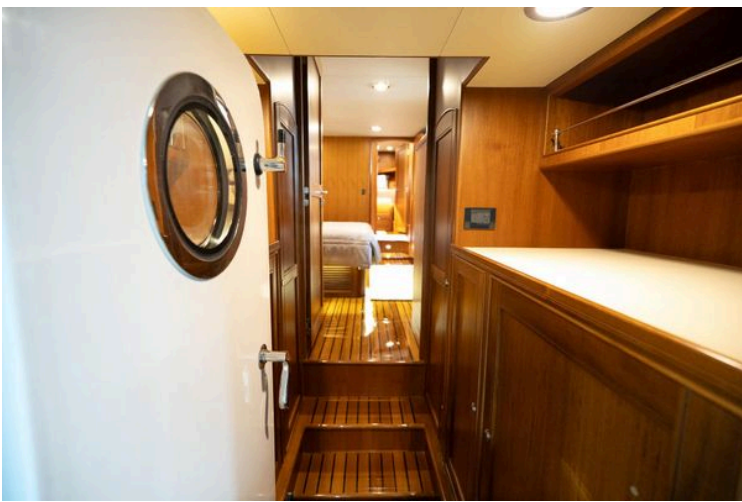
Master stateroom head



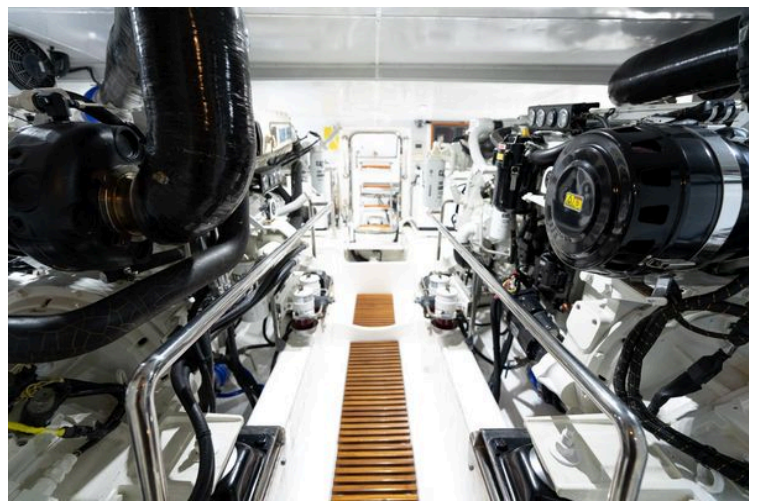
Master stateroom head



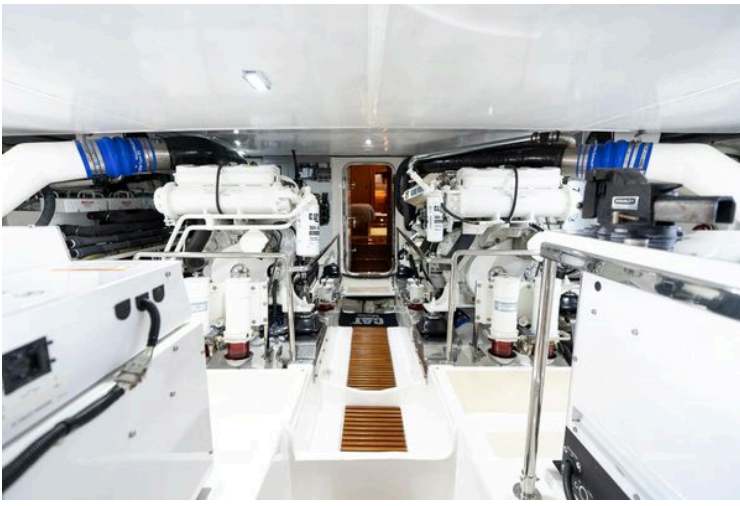
Engine room pass-through



Engine room pass-through



Engine room



Engine room



Engine room



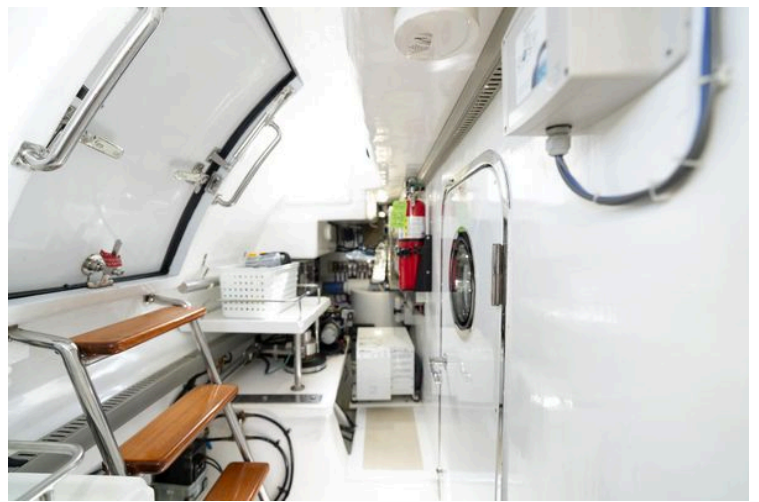
Engine room



Engine room



Engine room



Engine room



Bow



Bow



Bow Cleat



Air horns



Portuguese bridge



Portuguese bridge



Starboard side entrance



Flybridge to aft deck



Starboard side deck



Marlow bell



Flybridge



Flybridge



Flybridge



Flybridge



2015 Marlow Explorer 49E yacht helm with open hatch and navigation screens.



Flybridge



Flybridge



Flybridge



Flybridge



Frigibar- Seat/ Fridge/ Freezer



Flybridge hard top



Tender



A 2015 Marlow Explorer 49E yacht cruising on a calm lake under a partly cloudy sky.



Davit



2015 Marlow Explorer 49E yacht on open water with American flag.



2015 Marlow Explorer 49E yacht cruising on open water under a clear sky.



2015 Marlow Explorer 49E yacht cruising on open water under a cloudy sky.



2015 Marlow Explorer 49E yacht cruising on open water under cloudy skies.



2015 Marlow Explorer 49E yacht cruising on open water under cloudy skies.



2015 Marlow Explorer 49E yacht on open water under cloudy skies.



2015 Marlow Explorer 49E yacht on water, American flag, cloudy sky.