

72 ft 2010 Marlow Explorer 72E-CB, FIDDLERS DREAM

US\$2,595,000

Valletta, Malta



Boat Details

| | | | |
|------------|------------------------|----------------|------------------------|
| Make: | Marlow | Hull Material: | Composite |
| Model: | Explorer 72E-CB | Beam: | 20 ft 2 in |
| Year: | 2010 | Boat Location: | Valletta, Malta |
| Length: | 72 ft | Name: | FIDDLERS DREAM |
| Price: | US\$2,595,000 | Guest Cabins: | 4 |
| Condition: | Used | Guest Heads: | 4 |
| Class: | Motor Yacht | | |



Marlow Sales Department | Marlow Marine Sales, Inc.

Marlow Marine Sales, Inc., Snead Island, Florida, United States

Tel: +1 (941) 729-3370 Fax: 941-729-4955

sales@marlowmarine.com

Description

“Fiddlers Dream” was originally commissioned for extended cruising throughout Florida and the Bahamas, where she spent her first two years exploring warm coastal waters. She was later transported to Europe, operating out of Cannes, and now resides in Malta, having proven herself a capable and versatile yacht across multiple cruising regions.

Maintained to MCA class throughout her life and equipped with an ASEA 60/50 Hz shore power transformer, she is fully prepared for global cruising. Built to exacting Germanischer Lloyd specifications and certification standards, “Fiddlers Dream” has benefited from consistent professional maintenance. Her hull is protected with a durable Copper coat bottom system, enhancing efficiency and reducing upkeep.

The interior showcases exceptional craftsmanship, with much of the custom cabinetry designed and built by Design Unlimited in the UK. The result is a timeless, sophisticated aesthetic that places her among the most elegant yachts available in her class. She is offered fully equipped with high-end crockery, crystal glassware, and solid silver cutlery, ready for immediate enjoyment and entertaining.

From the raised pilothouse, visibility is outstanding, offering commanding 360-degree sightlines for confident navigation. Below, the full-beam master stateroom is ideally positioned amidships beneath the pilothouse, providing maximum comfort and stability.

Powered by twin 1,015 HP Caterpillar engines, she delivers impressive versatility. Cruising efficiently at 8 knots while achieving approximately 1 nautical mile per gallon or reaching top speeds near 20 knots. A comfortable fast cruise of 16–17 knots allows for efficient passage-making when desired. With a substantial 3,000-gallon fuel capacity, she boasts a range exceeding 3,000 nautical miles at displacement speeds.

Accommodation includes four well-appointed staterooms for owners and guests, complemented by three full heads. Separate crew quarters aft, designed for a captain and mate, feature private access, allowing crew to operate discreetly without entering guest areas.

“Fiddlers Dream” represents a rare combination of pedigree, global capability, and refined luxury, an exceptional opportunity for discerning owners seeking a true long-range cruising yacht.

Information & Features

Caterpillar C-18 (Engine 1)

Engine Type: **Inboard**
Engine Hours: **2275**
Power: **1015 hp**

Caterpillar C-18 (Engine 2)

Engine Type: **Inboard**
Engine Hours: **2275**
Power: **1015 hp**

Dimensions

LOA: **77 ft 8 in**
Beam: **20 ft 2 in**

Weights

Displacement: **92,000 lb**

Accommodations

Guest Cabins: 4

Guest Heads: 4

Accommodations

This yacht features a spacious and well-designed layout with four staterooms and three full heads in the main living area, providing comfortable accommodations for owners and guests alike. A separate crew quarters, complete with twin bunks and a full head, ensures privacy and functionality for extended cruising.

The enclosed command bridge is a standout feature, allowing the traditional lower helm area to be reimagined as an elegant dining space forward of the galley, perfect for entertaining in a climate-controlled environment with excellent views.

Crew quarters are thoughtfully positioned aft of the engine room and offer private deck access, enabling discreet operation without interrupting guest areas.

Throughout the yacht, a warm satin cherry interior finish adds a timeless sense of sophistication, complementing the vessel's refined design and inviting atmosphere.

- Schwepper hardware
- Granite counters in galley and heads
- Opening stainless port lights in all staterooms and heads
- Danish reading lamps for all berths
- Teak and Holly floors
- Grohe faucets
- Laminated tinted windows
- Teak window shades
- 24V LED lighting
- Tecma quiet flush heads
- Custom made carpets with protective covers
- Head Hunter 230V and 24V Dc water pumps
- Central Vacuum

Salon

The salon is exceptionally spacious, creating a comfortable and inviting atmosphere for relaxation or entertainment. Tinted windows allow natural light to filter in while maintaining privacy, complemented by custom-made drapes that enhance both style and functionality.

Accommodations include opposing genuine leather sofas and a coordinating lounge chair, thoughtfully arranged to encourage conversation and comfort. An elegant entertainment center is seamlessly integrated into the space, featuring a large LCD television concealed behind refined tambour doors, preserving the salon's clean and sophisticated aesthetic when not in use.

- Opposing Radiused Settees covered in beautiful leather Port and Starboard
- Comfortable Armchair
- Custom made coffee table
- 4 Custom Made end tables
- 46" Philips flat Screen TV
- Custom ceiling detail
- Sub-Zero Wine cooler
- U-Line Ice Machine
- Teak and Holly flooring over fiberglass composite sole
- 24V Italian and Danish lighting
- Separate AC control

Pilothouse

The pilothouse is impressively spacious and thoughtfully configured to maximize both comfort and functionality. Rather than a large, underutilized lower helm station, unnecessary in a command bridge design. The space has been intelligently reimagined with a generous seating area and teak table forward, creating an inviting setting for dining, relaxing, or planning passages. A compact helm station is positioned to starboard, offering a practical and efficient command position.

Aft of the dining area, the galley is seamlessly integrated and open to the salon, promoting a natural flow between living spaces. To starboard, a staircase provides convenient access to the staterooms below.

The secondary helm is designed with the owner-operator in mind, allowing the captain to remain engaged with family and guests while operating the vessel during extended offshore passages. This station is equipped with a modern Raymarine chart plotter, providing comprehensive navigation data and enhanced situational awareness in a streamlined, accessible layout.

- Large dining table with built in seating
- Teak and holly flooring
- 24V Italian and Danish lighting
- Flush FRP articulating pilothouse doors
- Cherry valance board w/ tube light
- Stairs up to the Command Bridge
- Stairs to the lower deck
- Separate AC control

Galley

The galley is centrally located on the main deck, positioned at the aft end of the pilothouse, which is accessed by three steps up from the salon. Thoughtfully designed, the space features an open sightline beneath the aft galley cabinetry, allowing visibility through to the salon and aft deck—enhancing the sense of openness and connection between living areas.

The countertops are finished in elegant Black Galaxy granite, adding both durability and a sophisticated visual appeal. An undermounted sink is positioned on the aft side of the counter for convenient workflow, while the U-shaped layout places a Gaggenau cooktop to starboard, complete with removable stainless steel sea rails to secure cookware underway. Below the cooktop, a matching Gaggenau oven is seamlessly integrated into the cabinetry.

Forward in the galley, Sub-Zero refrigerator and freezer drawers are conveniently located adjacent to the sink and dishwasher, providing efficient access to cold storage while maintaining a clean, organized layout. Generous cabinetry above and below the counters ensures ample storage, making the galley highly functional for both extended cruising and entertainment.

- Teak and Holly flooring
- 4 Sub Zero Refrigeration Drawers 700BR3
- 2 Sub Zero Freezer Drawers 700BF3
- Cherry Cabinetry
- 2 drawer Fisher Paykel dishwasher
- Granite countertops
- Gaggenau ceramic glass electric cooktop CK260
- Gaggenau oven with Rotisserie BO 280/281
- Storage cabinets and drawers
- Franke double sink w/tap
- Emerson Disposal
- Microwave oven
- Tube light under counter
- Grohe faucet
- Drinking water faucet, separate supply
- Spice racks
- Exhaust blower over cooktop
- Cutting boards/sink covers
- Appliance storage locker in countertop aft
- Includes Krups Coffee machine, Kettle, Toaster, Kitchen Aid Mixer
- Separate AC Controls

Master Stateroom

An exceptionally elegant space, the master stateroom aboard "Fiddlers Dream" leaves a lasting impression upon entry. You may well feel as though you have stepped aboard a yacht far larger in size. Widely regarded as one of the finest in her class, the craftsmanship, cabinetry, and overall ambiance set this full-beam owner's suite apart.

Located amidships just forward of the engine room, the master stateroom benefits from a well-insulated bulkhead and separation from the machinery space, enhancing both comfort and quiet. The centerline berth is flanked by custom Cherry nightstands, complemented by fabric insert panels and thoughtfully designed accent lighting that creates a warm and inviting atmosphere.

The en-suite head is situated aft to starboard and is outfitted with dual sinks, a Tecma Quietflush toilet, bidet, and a generously sized stall shower. Opposite, to port aft, a spacious walk-in closet provides excellent storage, further supported by multiple hanging lockers and abundant drawer space throughout the suite.

Entertainment is seamlessly integrated with a 40" television concealed within a custom-built cabinet, which rises on a power lift at the touch of a button when in use. Six opening portlights bring in ample natural light and fresh air, enhancing the sense of openness while maintaining privacy and comfort.

Altogether, this master suite embodies the perfect balance of luxury, functionality, and refined craftsmanship.

- King size berth
- SAT TV w/Receiver
- 40" Flat Screen TV on lift
- Bureau w/chest of drawers
- Cedar lined full height hanging lockers
- Drawers under bunk
- Tube light beneath and behind berth
- Vanity on Port Side
- Settee on Stbd Side
- Large head with stall shower
- 24V Italian and Danish lighting
- Bose vessel sound system with controls in each room
- Linen closet
- Heavy duty 316L portlights with screens
- Separate AC Controls

VIP

The VIP suite is located forward and offers a remarkably spacious and inviting retreat. Centered around a comfortable king-size berth, the stateroom is thoughtfully designed with both comfort and functionality in mind.

Ample storage is provided through two large hanging lockers and six generous drawers, ensuring plenty of space for extended stays aboard. The en-suite head is positioned to starboard and is directly accessible from the stateroom, featuring a full-size shower and well-appointed finishes.

- Cedar lined storage lockers
- Reading lamps
- Bose vessel sound system with controls in each room
- 4 large drawers under the bunk
- 6 large overhead drawers
- 26" Panasonic LCD TV
- Deck hatch for access to bilge and bow thruster
- Separate AC controls

Port Guestroom

This guest stateroom features twin side-by-side berths with a convenient nightstand positioned between them, creating a comfortable and balanced layout for guests. A full-height hanging locker aft of the bunks provides ample storage for extended stays.

The private en-suite head is well-appointed with granite countertops, a China sink with Grohe faucet fixtures, and a separate stall shower, offering both functionality and a refined aesthetic consistent with the yacht's overall design.

- Cedar lined hanging lockers
- Bose vessel sound system with controls in each room
- Nightstand between berths
- Reading lamps for each berth
- Separate AC Controls

Starboard Bunks

Located on the starboard side opposite the port guest stateroom, a set of stacked bunks provides additional flexible accommodation. These berths are ideal for a busy family weekend or can be utilized to house additional staff when needed. Complementing the separate aft crew quarters, which also include two bunks.

A Bose vessel sound system is integrated throughout the yacht, delivering high-quality audio for entertainment both in guest spaces and common areas, enhancing the onboard experience.

- Reading Lamps
- Separate AC Controls
- Bose Sound System
- Built in Storage

Command Bridge and Electronics

The upper helm station is fully enclosed and finished to the same high standard as the rest of the yacht, offering a climate-controlled and refined command environment. Twin Crown helm chairs provide exceptional comfort and a commanding view in all directions, while allowing easy access to the wheel and three new 24" Raymarine touchscreens for advanced navigation and control.

Aft of the helm chairs, a spacious L-shaped settee with an accompanying table creates an inviting area for guests to relax while underway. On the port side, fitted cupboards and drawers provide convenient and discreet storage, maintaining the clean, well-organized layout of the space.

Capable of comfortably accommodating up to six adults while cruising, the command bridge offers panoramic visibility and a social atmosphere that makes time underway both enjoyable and engaging. Access to the aft deck is provided through the command bridge's aft door, allowing seamless movement between indoor and outdoor spaces.

- Airtex Davit 600KG
- Seating with Storage
- Sunshade -Removable
- Isotherm Drink Fridge

This yacht is equipped with a state-of-the-art Raymarine Axiom navigation suite, featuring three 24" Lighthouse touchscreens that provide intuitive control and comprehensive system integration. The advanced electronics package includes a 6-foot open array radar, AIS, forward-looking sonar, night vision capabilities, integrated camera systems, and a satellite communication system for reliable connectivity offshore.

For enhanced maneuverability, she is also fitted with Dockmate wireless controls, allowing precise operation of the engines and thrusters from anywhere on board, an invaluable feature for close-quarters handling and docking.

With her robust electronics suite and redundant systems, this yacht is fully equipped and confidently prepared for worldwide cruising.

- Wireless Dockmate System
- 2 color cameras and 1 Thermal camera in the Engine Room
- Aft Deck Camera
- Twin Raymarine VHF Radios RAY 90/91 & RAY240
- Raymarine Personal Life Tag System
- FLIR Thermal Imagine Camera Model: Navigator 11
- Echo Pilot Forward looking sonar Model MRHH 330 FLT
- Francis Searchlight Model Voyager 2
- Sat Phone - Thrane & Thrane Model Sailor 500/250 Fleet
- Globestar Handheld Sat Phone Model GSP 1700
- Marine Data Compass
- EPIRB Oceansignal ARH100

Engine & Mechanical

The engine room offers full stand-up headroom and is fully air-conditioned, creating a comfortable and accessible working environment. There is excellent access on all sides of the engines, allowing for straightforward inspection and maintenance.

At the forward end of the engine room, a centralized sea chest supplies seawater to the engines, generator, air-conditioning system, and all other onboard systems requiring raw water cooling. Each system is individually valved, providing convenient isolation for servicing and enhanced operational control.

A single 3,000-gallon fuel tank is positioned just forward of the engine room bulkhead, strategically located near the yacht's center of buoyancy. This design helps maintain a consistent running angle regardless of fuel level, contributing to stable and predictable performance underway. Additionally, the fuel tank serves as an effective sound barrier, further insulating the forward living spaces from engine noise and vibration.

- Caterpillar C-18 engines at 1,015 HP each (2275 hours)
- Twin 22.5KW 50Hz Cummins Generators (2400 hours each)
- Two SK9 Sea Keeper Gyro Stabilizers; new in 2019
- Underwater Lights
- Pressure freshwater faucet
- Aquadrive flexible drive couplings
- Soft engine mounts to reduce vibration
- Proprietary sea chest water intake system
- Drive coupling covers, FRP
- PSR pressure freshwater system
- Sea Chest inspection and cleanout port
- Salt water washdown sea water system
- Seacocks on all seawater supply lines
- FRP fuel tank with sight gauge and digital gauge at helm
- Engine room lead/foam sound insulation
- Engine room blowers 220V high volume
- Saltwater pump for washdown
- Watermaker 900 GPD Sea Recovery Model: SRC Aquatic 900-2
- Duel Racor fuel water separators for each Engine and Generator, with gauge
- FRP holding tank plumbed for Dockside and Overboard discharge
- Engine room vent blowers
- Reverso Oil Change Systems for Engines, Transmissions, and Generators
- Common drainage system for sink, deck, shower and bilge
- Fresh water outlet with hose for engines & generator
- Heavy duty manual bilge pump
- Under water exhaust system
- High water bilge alarm in engine room
- 24V overhead lights, waterproof Dripless engine shaft seal logs
- FRP gray and black water tanks
- Heavy duty vacuum pumps for gray and black water
- Smooth finish gel coated bilges
- HD watertight engine room door with inspection port
- Heavy Duty exhaust hose clamps
- High Temperature silicone exhaust hoses

- Proprietary Air inlet system, baffled
- Polished stainless engine beds, risers and fuel manifolds
- FRP fuel tanks
- Color coded copper piping for fuel, water and hydraulic system
- DC outlet
- AC outlet
- Four 3700 GPH bilge pumps with auto & manual switch
- Varnished teak bilge grating in the center of the engine room
- 240V fluorescent lighting
- Engines and gensets fully serviced April 2026

Cockpit

The cockpit has uninterrupted teak decks and a built-in seating area with table. This yacht has an extended boat deck that provides full overhead protection from rain and sun in the cockpit. The salon has double doors leading to the cockpit and when open, the cockpit and salon become one entertaining area. Transom doors lead to the oversize swim platform. The swim platform leads to a transom door accessing the engine room and crew quarters. The fixed docking station has been upgraded to a wireless Dockmate System.

- Large Stainless Custom Hawse Pipes
- Built in seating with storage under
- Drink Fridge Isotherm CR42
- Molded FRP stairway to flybridge and boat deck.
- Twin transom doors with steps to the integrated swim platform.
- Aft deck speakers integrated with Bose remote
- Crew access Stairway to Crews Quarters
- Rails on Swim Platform for Safety
- Storage Cabinet for Ropes and Cleaning Supplies

Crew Quarters

The cockpit features uninterrupted teak decking and a built-in seating area with an accompanying table, creating a comfortable and inviting outdoor living space. An extended boat deck provides full overhead coverage, offering excellent protection from both sun and rain while enhancing the usability of the cockpit in a variety of conditions.

Double doors from the salon open directly into the cockpit, allowing the two spaces to seamlessly merge into one expansive entertaining area, ideal for indoor-outdoor living and social gatherings. Aft, transom doors provide access to an oversized swim platform, which in turn connects to a transom entry leading to the engine room and dedicated crew quarters, ensuring efficient and private access to technical spaces.

The yacht is also equipped with a fixed docking station that has been upgraded with a Dockmate wireless control system, allowing for precise and convenient maneuvering of the engines and thrusters from the deck.

- Microwave
- Washer/Dryer
- Cockpit Access Stairs
- Transom Door Twin bunks
- Head and Shower
- AC/Heat with their own control

Construction and Deck Equipment

This yacht is constructed using advanced materials and modern building techniques that deliver exceptional strength while maintaining a lighter overall displacement than traditionally built vessels. The incorporation of Kevlar, modified epoxy resins, and high-density core materials results in a hull that is stronger than many heavier counterparts, yet significantly more efficient.

Throughout the yacht, honeycomb and structural foam cores are utilized in counters, cabinetry, and soles, contributing to both durability and weight reduction without compromising structural integrity or finish quality.

While performance is impressive, the benefits extend well beyond speed. The reduced weight enhances fuel efficiency and range, allowing for extended cruising with lower operating costs, an advantage that is especially valuable for long-distance passagemaking and time spent offshore.

- Twin Maxwell Vertical Windlass's Model 4000
- Besenzoni Passerelle in Transom Steps Model:PL380 Premium
- Molded FRP flush window frames
- Proprietary High Pressure lamination System, vacuum bagged
- Engineered sandwich construction throughout
- Laminated and tempered window glass
- Dupont Kevlar lamination fabrics
- Bow Thruster remote control
- Stern Thruster remote control
- Non-skid FRP decks, main & flybridge
- Screens on all opening windows, hatches and ports
- Sandwich bulkhead, floors, stringers construction
- Deck Lights 24V
- Burmese Teak weather decks
- Red night lights on flying bridge
- Heavy duty concealed swim ladder
- Heavy duty low profile 316L SS Hatches (6)
- Velocijet Strut Keels
- Sliding hatch and door to bridge from pilothouse
- Owner aboard logo lighting
- Bulwark doors and gates P&S
- Heavy duty 316L solid stainless rub rail
- S/S ladder with teak steps, cockpit to bridge
- Portuguese Bridge deck storage lockers
- Cockpit deck lockers, FRP
- Cockpit controls, sink and fire system
- Molded FB seating with dry storage under
- Engine room access from cockpit
- Teak Coaming
- Oval Stainless Steel Handrails
- Sliding doors, P&S pilothouse, aft salon with lock
- FTG Water Filtration System Model WFA 12
- FRP bow pulpit with S/S anchor roller
- Transom door
- FRP swim platform with teak inlay

Tender

Avon Seaport 400 DL (4 Meters long)

Yamaha 50HP outboard 4 Stroke Model F50 FETL

Exterior Hardware & Fittings

- Francis Searchlight Spotlight
- Hidden fueling ports with anti- spill catch basin
- 1.375" stanchions main deck S/S rudders
- S/S cleats & hawse holes
- Strut keels providing full propeller protection
- Aquamet 22 propeller shafting
- SS Portholes heavy duty 316L SS
- Custom CNC cut Nibral propellers, "S" class
- Fresh water washdown, cockpit
- Bronze through hull fittings
- Custom stainless anchor light and pennant bracket
- Windlass Lofrans Titan B
- Teak or S/S steering wheel
- Super Duty custom trim tabs
- Teak bow and stern staffs
- Sea water washdown, forward deck, high volume
- Exalto heavy duty windshield wipers and washers
- Proprietary stanchion base mounting system
- 2 Crown Helm seats
- Bose vessel sound system with controls in each room
- Fresh varnish - April 2026

Recent Upgrades/Additions

2024

- Varnish bridge
- New teak on aft platform

2025

- Starlink
- CCTV upgrade
- New TVs
- Varnish galley / dining area & cap rails
- Crane service and load test
- New teak in anchor area
- Winterisation of machinery incl. ACs & tender

2026

- Paint stern
- Varnish cap rail
- ME service
- Genset service
- Gyro service
- New Ext. fabrics
- Copper coat touch up & Prop speed
- New Anodes
- Polish hull and superstructure
- Windows - re-sealing

Disclaimer

The Company offers the details of this vessel in good faith but cannot guarantee or warrant the accuracy of this information nor warrant the condition of the vessel. A buyer should instruct his agents, or his surveyors, to investigate such details as the buyer desires validated. This vessel is offered subject to prior sale, price change, or withdrawal without notice.



Bow Facing Aft



Bow Facing Fwd



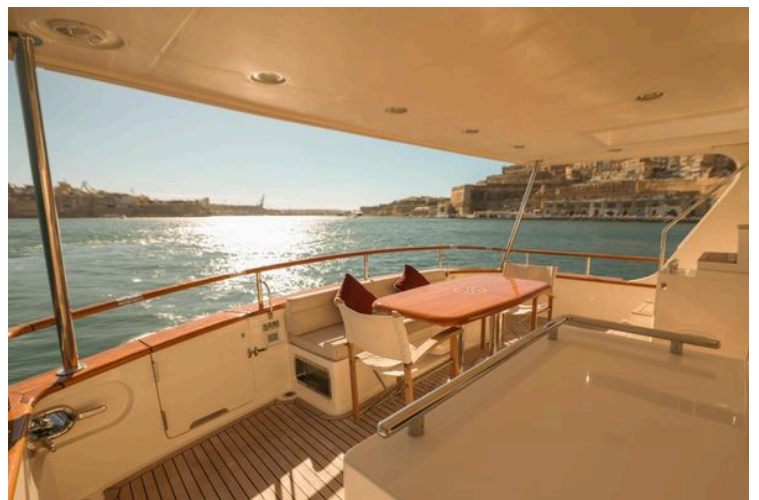
Portuguese Bridge Facing Fwd Port



Dual Windlass



Command Bridge Starboard Aft Seating



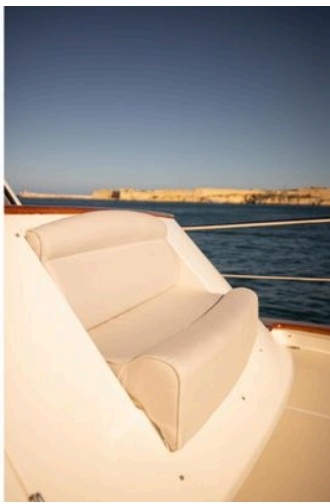
Cockpit Table Facing Port



Cockpit Facing Fwd Port



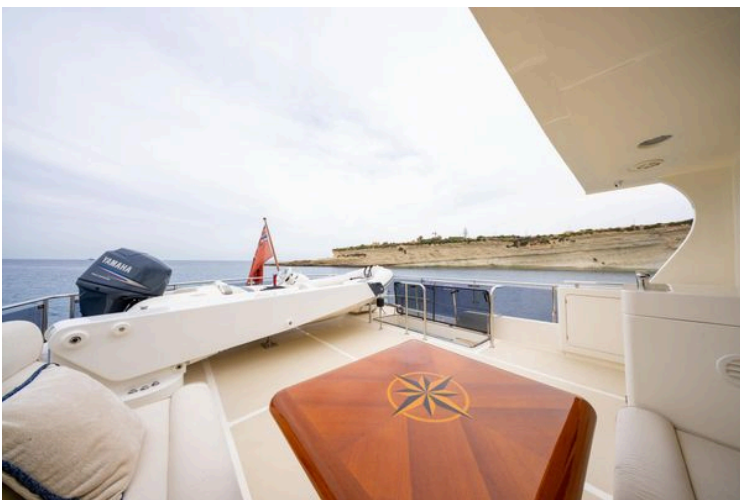
Cockpit Dinette



Port Bow Seat



Davit and Tender



Davit



Tender



Salon Facing Starboard Aft



Salon Looking Forward Stbd



Salon Facing Fwd



Salon Table



Salon Looking Forward Port



Salon Facing Aft



Salon Facing Aft Stbd



Wine Cooler in Salon



Fwd Salon TV/Storage



Pilothouse Facing Forward



Galley Forward



Galley Looking Starboard



Cooktop and Oven



Galley Looking Aft



Galley and Pilothouse Seating



Stairs from Galley to Command Bridge



Command Bridge Facing Port



Command Bridge Facing Forward



Helm Electronics



Command Bridge Facing Stbd



Command Bridge Settee Facing Aft



Master Stateroom Facing Aft



MSR Facing Fwd Stbd



MSR Facing Fwd Port



Master Closet



MSR Facing Port



MSR Facing Stbd



MSR Head Facing Aft



MSR Head Facing Port



Master Large Shower



Master Vanity



Companionway Facing Port



Companionway Facing Aft



VIP Facing Forward



VIP Facing Port



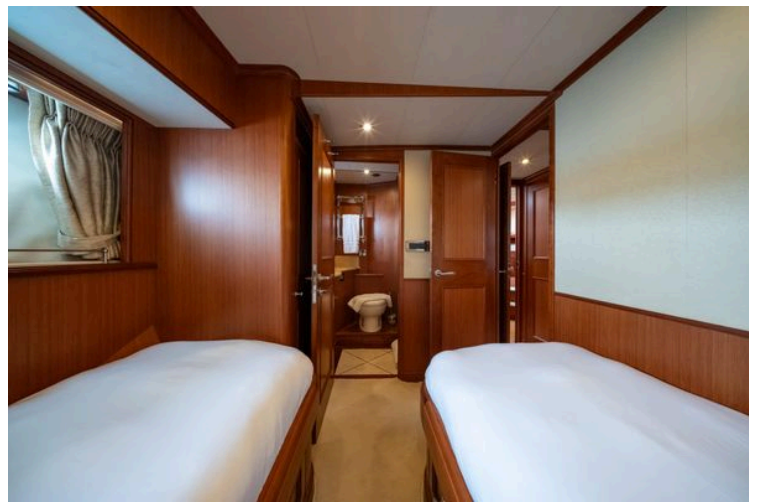
VIP Head



Bunks Facing Aft



Bunks Port Guest



Bunks Port Guest Facing Forward



Port Guest Head



Crew Bunks



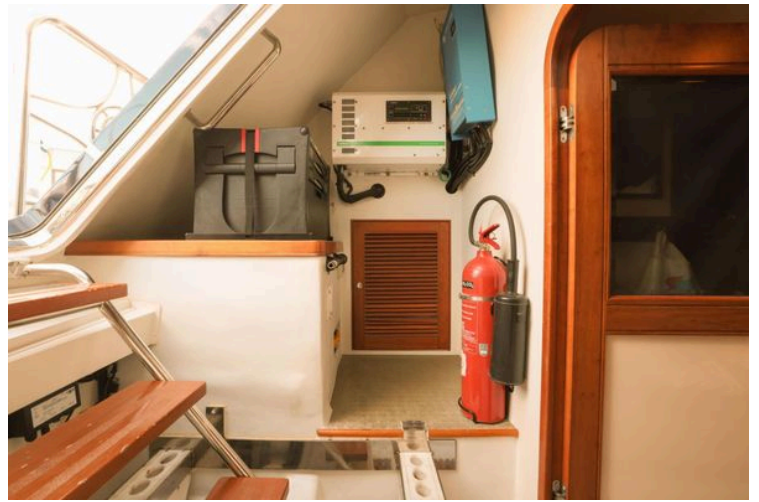
Crew Head



Crew Laundry



Lazarette Facing Starboard



Lazarette Facing Port



Engine Room Facing Fwd



Port Engine



Starboard Engine



Generator 1



Generator 2



Port Profile



Fiddlers Dream Profile



Fiddlers Dream Transom Stbd



Cruising Fwd



Cruising Stbd