

57 ft 2020 Riviera 545 SUV, Fringe Benefit IV

**US\$1,595,000**

Palmetto, Florida, United States



## Boat Details

Make:	<b>Riviera</b>	Hull Material:	<b>Fiberglass</b>
Model:	<b>545 SUV</b>	Beam:	<b>16 ft 5 in</b>
Year:	<b>2020</b>	Boat Location:	<b>Palmetto, Florida, United States</b>
Length:	<b>57 ft 7 in</b>	Name:	<b>Fringe Benefit IV</b>
Price:	<b>US\$1,595,000</b>	Fuel Type:	<b>Diesel</b>
Condition:	<b>Used</b>	Max Speed:	<b>31 kn</b>
Class:	<b>Cruiser</b>	Max Draft:	<b>4 ft 6 in</b>



**Marlow Sales Department | Marlow Marine Sales, Inc.**  
Marlow Marine Sales, Inc., Snead Island, Florida, United States  
Tel: +1 (941) 729-3370 Fax: 941-729-4955  
sales@marlowmarine.com

## Description

“Fringe Benefit IV” is a highly customized and exceptionally well-equipped 2020 Riviera 545 SUV, representing one of the most desirable enclosed bridge sport yacht platforms in her class. Maintained by an experienced yacht owner and outfitted with extensive upgrades, she is truly turnkey and ready for immediate cruising, entertaining, fishing, diving, or extended offshore adventures.

Combining Riviera’s renowned Australian craftsmanship with a long list of premium factory options and aftermarket enhancements, this vessel delivers the ideal blend of performance, comfort, and advanced technology. Powered by twin Volvo Penta D11 IPS950 pod drives (725 HP each) and stabilized with a Seakeeper M9 gyro, she offers confident handling, smooth ride quality, and excellent fuel efficiency.

## Information & Features

### Volvo D-11 (Engine 1)

Engine Type: **Inboard**  
Fuel Type: **Diesel**  
Power: **725 hp**

### Volvo D-11 (Engine 2)

Engine Type: **Inboard**  
Fuel Type: **Diesel**  
Power: **725 hp**

### Dimensions

LOA: **57 ft 7 in**  
Beam: **16 ft 5 in**  
Max Draft: **4 ft 6 in**

### Weights

Displacement: **52,657 lb**

### Speed

Cruising Speed: **26 kn**  
Max Speed: **31 kn**

### Tanks

Fuel: **925 gal**  
Fresh Water: **211 gal**  
Holding: **106 gal**

## Performance

### Specifications

- Hull Shape: Deep Vee
- LOA: 57'7"
- Beam 16'5"
- Maximum draft: 4'6"
- Air Draft: 17'5" Dry
- Displacement: 52,657lbs
- Total Power: 1450hp (2) Volvo D-11 725hp Diesel Engines
- Cruise: Approximately 26 knots
- Top Speed: Up to 31 knots
- Fuel Capacity: 925 gallons
- Water Capacity: 211 gallons
- Holding Tank: 106 gallons

## Key Highlights

- Twin Volvo Penta D11 IPS950 (725 HP each) with IPS pod drives (Approximately 1,000 Hrs)
- Seakeeper M9 gyro stabilization with control pad
- Yacht Controller wireless remote system
- “Skyhook” digital anchoring system
- Garmin electronics suite with 54” open array radar
- FLIR night vision camera system with custom mast
- GOST security, tracking, and onboard video system
- Starlink with WiFi Extender and MoFi Router
- Custom JL Audio system with 18 speakers & 7 amplifiers
- Cockpit TV with upgraded connection available across displays including helm
- Hydraulic swim platform lift w/ tender chocks
- Teak cockpit and mezzanine steps
- Tropical package with upgraded air conditioning
- Underwater multicolor lighting integrated with stereo system
- Rigid 48” forward LED light bar
- Additional GFI outlets in cockpit storage areas
- Custom storage solutions in pod compartments
- Spare Volvo P4 propellers included
- Custom exterior covers (windlass, bow speakers, cockpit enclosure, sunshade)
- Wireless handheld Garmin VHF in cockpit
- Upgraded GOST system with video monitoring
- Cockpit bait prep and fishing enhancements
- 1,000-hour services completed
- Volvo Penta LXC & major component warranty through July 23, 2026 (or 2,000 hours)
- Brunswick extended warranty available through July 23, 2026

## Cockpit & Exterior

Designed for entertaining, diving, and fishing, the cockpit is exceptionally well-appointed with thoughtful upgrades throughout. Opening deck hatches reveal livewell tanks, generous storage compartments, and convenient access to key onboard systems.

Forward in the cockpit, a large deep freezer is perfectly positioned forward of an aft-facing settee with a folding table with cupholders, creating a comfortable, shaded space ideal for alfresco dining or relaxing after a day on the water. To starboard, an outdoor galley features a grill and sink, complemented by an overhead TV, making this area a natural gathering space for entertaining guests in style.

- Teak-laid cockpit sole including mezzanine steps
- Custom baitwell pump with variable speed control
- Dive tank storage and custom cockpit storage bins
- JL Audio high-performance sound system integrated throughout exterior
- Cockpit TV and Fusion stereo control
- Hydraulic swim platform with tender handling capability
- Transom access and wide swim ladder
- Underwater multicolor LED lighting (Lumitec Seablaze) synchronized with audio
- aft awning
- cockpit quarter cleats
- Custom covers for UV protection

## Galley

The fully equipped galley is ideally positioned aft in the salon, enhancing both functionality and social flow while entertaining. A large opening aft window seamlessly connects the galley to the cockpit, creating an inviting indoor-outdoor living experience. This versatile design allows for easy service, improved ventilation, and ensures guests remain comfortable and connected whether inside or out.

- Walnut gloss cabinetry throughout
- Full-size refrigeration and freezer
- Dishwasher
- Microwave oven and convection cooking appliances
- Ample storage and countertop space
- Large opening aft window for indoor/outdoor living

## Salon

The salon is finished in upgraded walnut gloss cabinetry with new upholstery and interior carpet, creating a warm and modern aesthetic. Large windows with roller blinds provide abundant natural light while maintaining privacy when desired.

- Custom salon seating with upgraded upholstery
- TV system with entertainment distributed throughout the vessel
- Flat-panel televisions accessible across multiple zones
- Fusion stereo controller with cockpit integration
- Seamless indoor/outdoor flow to cockpit via sliding doors

## Pilothouse/Helm

The enclosed pilothouse is fully climate-controlled and thoughtfully designed for long-range cruising comfort. Equipped with a full suite of advanced electronics and joystick control, the helm offers exceptional ease of operation, making this yacht equally well-suited for owner-operators and professional crew.

Expansive 360-degree panoramic views provide outstanding visibility, while the spacious salon-style settee creates a comfortable and social environment. Whether underway or at the dock, this elevated space ensures a relaxed, connected, and highly enjoyable cruising experience for all onboard.

- Recaro helm seats in black leather
- Garmin multifunction displays with additional accessory screen
- Garmin autopilot with handheld remote
- FLIR night vision camera integration
- Radar: Garmin Fantom 54" open array CHIRP
- Anchor camera, engine room camera, and awning camera systems
- Joystick control with Skyhook digital anchoring
- Yacht Controller wireless docking system
- Bow thruster for enhanced maneuverability

## Master Stateroom

Ideally located amidships for maximum comfort and stability, the master stateroom offers a private and well-appointed retreat. The space features a large TV with an integrated sound system, creating a relaxing onboard escape.

A comfortable L-shaped settee to starboard, complete with built-in storage, adds both functionality and a cozy lounging area. The private en-suite head includes a separate shower, while generously sized storage compartments and a full hanging locker provide ample space for extended cruising, ensuring comfort and convenience well beyond a weekend getaway.

- Queen berth with premium finishes
- En-suite head with separate shower
- Hanging lockers and drawer storage
- Roller blinds for privacy
- Quiet, well-insulated from machinery spaces

## VIP Stateroom

This comfortable and well-appointed stateroom is filled with natural light from overhead hatches, creating a bright and inviting retreat for guests. Thoughtfully designed, it features dual matching hanging lockers along with built-in drawers and cabinetry, providing ample storage for extended stays.

The adjoining head offers dual access, allowing entry both from the companionway and directly from the VIP stateroom, delivering added convenience and privacy for guests onboard.

- Queen berth
- Hanging locker and storage drawers
- Shared or ensuite access to guest head
- Overhead hatch with ventilation

## Starboard Guest Stateroom

This versatile guest stateroom is thoughtfully designed with stacked bunks to maximize space while maintaining comfort. Generous storage is provided through several large drawers and a full-size hanging locker, ensuring ample room for guests on extended stays.

A large port window fills the space with natural light and offers beautiful water views, creating a bright and welcoming atmosphere for those onboard.

- Twin bunks
- Hanging locker storage
- Flat-screen TV (24" LED)
- Roll down window shade
- Easy access to guest head

## Electronics & Navigation

This vessel features a comprehensive, fully integrated electronics package for ease of use and efficient navigation:

- Garmin navigation suite with plotter, radar, AIS, autopilot, depth, and sonar
- CHIRP sounder/transducer
- VHF radios including cockpit handheld unit
- Starlink
- WiFi Extender with MoFi Router
- GOST security, tracking, and onboard surveillance system with video
- Multiple onboard cameras: engine room, anchor, awning, and cockpit
- TV integration across multiple zones including helm and cockpit

## Engine Room

- Twin Volvo Penta D11 IPS950 pod drive engines (725 HP each)
- Automatic oil change system for engines and pods
- Upgraded generator
- Secondary freshwater pump system
- Fuel and water filtration systems
- Organized layout with excellent access
- Integrated monitoring systems

## Summary

“Fringe Benefit IV” is a standout Riviera 545 SUV that has been thoughtfully upgraded and meticulously maintained by an experienced owner. With extensive electronics, premium audio, advanced navigation systems, and a long list of custom enhancements, she is exceptionally well-equipped for serious cruising, entertaining, and offshore adventure.

Turnkey, fully optioned, and backed by warranty coverage, this vessel represents one of the most compelling opportunities available in her class today.

## Disclaimer

The Company offers the details of this vessel in good faith but cannot guarantee or warrant the accuracy of this information nor warrant the condition of the vessel. A buyer should instruct his agents, or his surveyors, to investigate such details as the buyer desires validated. This vessel is offered subject to prior sale, price change, or withdrawal without notice.



Cockpit Facing Port 2



Cockpit Facing Forward



Cockpit Dinette Facing Forward



Cockpit Table Folded



Cockpit Table Open



Cockpit Facing Starboard



Cockpit Grill & Sink



Opening Galley to Cockpit Window



Bow Facing Forward Starboard



Bow Facing Forward



Bow Profile



Cockpit Facing Forward



Starboard Locker



Port Control Station



Port Forward Cockpit



Port Walkway Facing Forward



Port Side Deck Facing Aft



Electronics Mast



Galley Appliances



Galley Cooktop



Galley Facing Aft



Galley Facing Forward



Bow Facing Aft Port



Bow Facing Aft



Bow Facing Forward



IPS POD



Galley Facing Port



Galley Facing Port 2



Galley Facing Starboard



Helm Controls



Helm Electronics



Joystick



Helm Facing Port



Helm Facing Forward Starboard



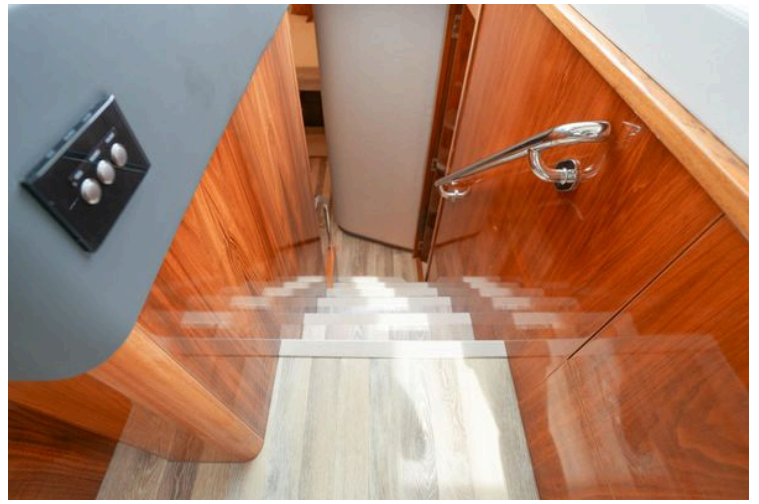
Helm Facing Forward Port



Helm Facing Forward



Galley Facing Forward



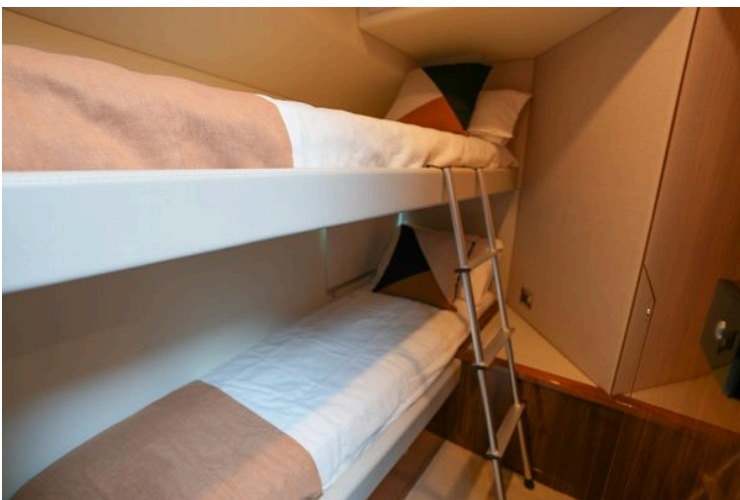
Staircase to Companionway



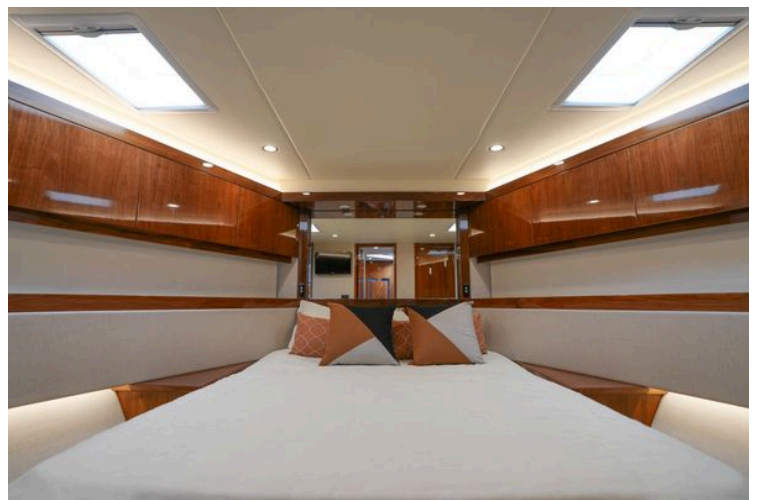
Laundry and Storage



Companionway Staircase



Starboard Guest Bunkroom



VIP Forward



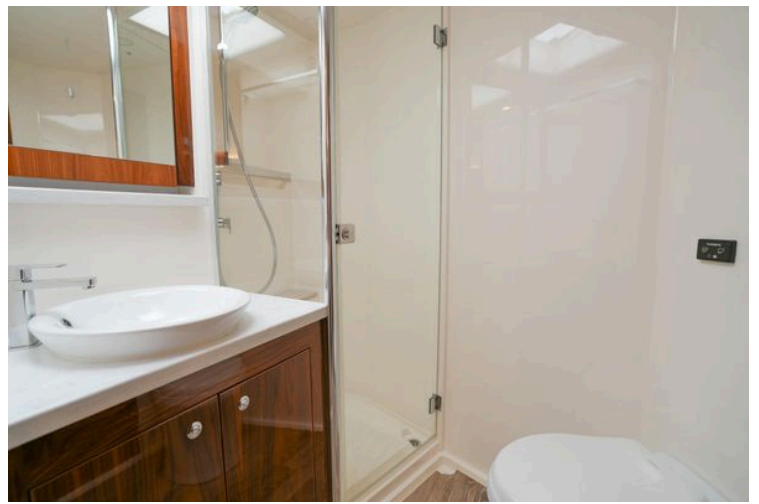
VIP Facing Starboard



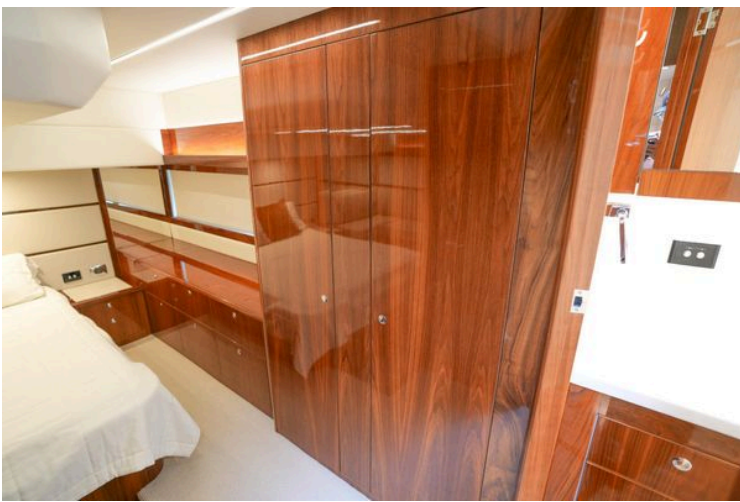
VIP Facing Port



VIP Head 2



VIP Head



MSR Locker Closed



Light Bar



Livewell Hatch



MSR Locker



MSR Facing Starboard



MSR Facing Port



MSR TV



MSR Starboard Settee



MSR Head



MSR Head and Shower



MSR Aft



MSR Facing Starboard



Starboard Forward Cockpit



Galley Facing Aft



Cockpit Grill and Sink



Overhead Shades



Port Cockpit Audio



Port Profile



Port Deck Facing Aft



Salon Facing Port



Starboard Salon Settee



Starboard Walkway Facing Aft



Starboard Walkway Facing Forward



Stern Profile



Throwable PFD