

34 ft 2020 Beneteau Flyer 10

US\$239,000

Apollo Beach, Florida, United States



Boat Details

Make:	Beneteau	Hull Material:	Fiberglass
Model:	Flyer 10	Beam:	11 ft
Year:	2020	Boat Location:	Apollo Beach, Florida, United States
Length:	34 ft 10 in	Fuel Type:	Gas/Petrol
Price:	US\$239,000		
Condition:	Used		
Class:	Sports Cruiser		



Marlow Sales Department | Marlow Marine Sales, Inc.

Marlow Marine Sales, Inc., Snead Island, Florida, United States

Tel: +1 (941) 729-3370 Fax: 941-729-4955

sales@marlowmarine.com

Description

2020 Beneteau Flyer 10 (Flyer 32) - Twin Mercury 300's - Exceptionally Kept - Apollo Beach, FL

This Beneteau Flyer 10, also known as the Beneteau 32, offers the rare combination of performance, comfort, and versatility that has made this model one of Beneteau's most sought-after express outboard designs. Privately owned and lightly used, this vessel presents as a clean, well-maintained example ready for the upcoming boat season. This versatile, sporty powerboat blends dayboating fun with cruiser comfort, featuring powerful Mercury Verado 300 outboard motors for speeds over 35 knots, a smart asymmetric walkaround deck for easy movement, and spacious, modular living areas with sunpads, a cockpit galley, and below-deck cabins with berths for overnight stays, making it ideal for both fast trips and extended cruising for many passengers. She is a great day boat or weekend cruiser with a very social cockpit.

This Flyer 10 features two double berths and a fully equipped bathroom with a separate shower for extended trips. Flooded with natural light through the long hull glazing, the central cabin and mid-cabin provide ample space and plenty of storage. Enhanced by beautiful woodwork, the interior atmosphere screams comfort and sophistication. She features twin Mercury Verado power with a bow thruster, joystick and dual controls as well as Garmin electronics.

Similar to Cruisers, Sea Ray, Monterey, Cobalt, Saxdor, Axopar, Wellcraft

Available for showing in Apollo Beach, Florida, with immediate access to Tampa Bay and Gulf cruising waters.

Information & Features

Mercury Verado 300 4-Stroke (Engine 1)

Engine Type:	Outboard	Power:	300 hp
Fuel Type:	Gas/Petrol		
Engine Hours:	250		

Mercury Verado 300 4-Stroke (Engine 2)

Engine Type:	Outboard	Power:	300 hp
Fuel Type:	Gas/Petrol		
Engine Hours:	250		

Dimensions

LOA:	34 ft 10 in
Beam:	11 ft
Min Draft:	2 ft 7 in

Weights

Displacement:	12,500 lb
---------------	------------------

Construction & Hull

- Fiberglass construction
- Self-bailing cockpit
- Bilge pumps
- Stainless steel hardware
- Through-hull fittings with chrome or bronze above the waterline and bronze below the waterline
- Heavy-duty rub rail

Deck & Cockpit

Designed for Entertaining

The versatile cockpit converts easily for cruising, lounging, and social gatherings - making it ideal for sandbar days, sunset cruises, and waterfront dining.

Notable features include:

- Conveniently located deck cleats
- Extended twin swim platforms
- Full mooring covers
- Hardtop with windshield
- Eisenglass Enclosure
- Swim ladder
- Shore power
- Easy access deck for engine checks
- Multiple storage lockers
- Electric lift for easy access to bilge and generator
- Electric grill, sink and refrigerator
- Cockpit table
- Seating for guests

Comfortable Overnight Accommodations

Below deck, the Flyer 10 features a forward double berth, mid-cabin sleeping area, an enclosed head with separate shower, and air-conditioned comfort for spontaneous weekend getaways.

Canvas & Exterior Equipment

- Hardtop with Eisenglass
- Mooring canvas
- Anchor

Helm & Electronics

- Dash panel with Garmin electronics
- VHF radio
- Fusion stereo with speakers
- Compass
- Navigation system
- Joystick steering and dual throttle controls
- Horn and navigation lights (USCG compliant)
- Bow thruster
- Zipwake

Mechanical & Systems

- Trim tabs- zipwake
- Water-separating fuel filters
- Two fuel tanks
- Battery switches
- Westerbeke generator
- Air conditioning

Console & Interior

- Forward seating with table and convertible V berth
- Master stateroom aft
- Head with separate full size shower
- Microwave oven
- Ample storage
- Luxurious appointments, fabrics and interior

Engines & Recent Updates

- Twin Mercury Verado 4-stroke outboards
- Approximately 250 engine hours
- Flush ports
- Mercury Joystick controls

Condition

This vessel reflects responsible ownership and careful maintenance. It presents cleanly and ready for survey and sea trial.

Disclaimer

The Company offers the details of this vessel in good faith but cannot guarantee or warrant the accuracy of this information nor warrant the condition of the vessel. A buyer should instruct his agents, or his surveyors, to investigate such details as the buyer desires validated. This vessel is offered subject to prior sale, price change, or withdrawal without notice.



Cockpit grill cover



Cockpit Grill



Cockpit grilling station



Cockpit refrigerator



Cockpit table



Forward interior seating



Fusion Stereo



Looking aft from bow seating



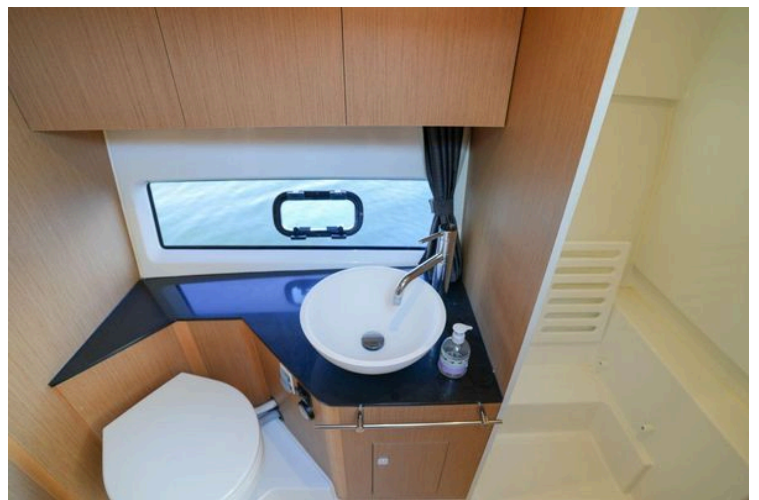
Microwave



Refrigeration



Garmin



Head



Helm Station



Helm seating



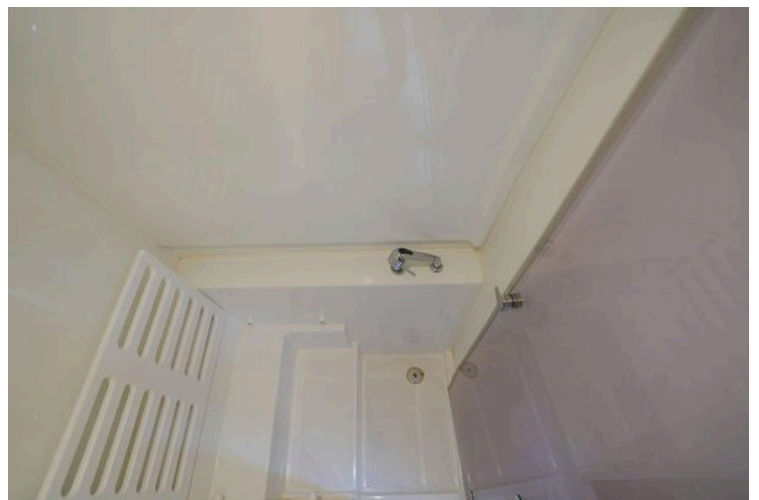
Joystick



Midship Stateroom



Refrigerator



Shower



Sunpad on the bow



Throttle controls



Verado 300 outboards



VHF control



Zipwake



Portside profile



Stern picture



Starboard side profile