

62 ft 2022 Marlow Explorer 62E-CB, WHAT'S NEXT II
US\$3,495,000
Marco Island, Florida, United States



Boat Details

Make:	Marlow	Class:	Motor Yacht
Model:	Explorer 62E-CB	Hull Material:	Composite
Year:	2022	Beam:	19 ft 6 in
Price:	US\$3,495,000	Name:	WHAT'S NEXT II
Condition:	Used	Fuel Type:	Diesel



Marlow Sales Department | Marlow Marine Sales, Inc.
Marlow Marine Sales, Inc., Snead Island, Florida, United States
Tel: +1 (941) 729-3370 Fax: 941-729-4955
sales@marlowmarine.com

Description

What's Next II is a rare opportunity to purchase a late model Marlow Explorer. She has virtually every upgrade available, including a fully enclosed command bridge with day head and large galley forward in the pilothouse. She has a full beam master with walk in closet, large VIP and 3rd bunk room with side by side bunks and some of the most advanced technology and options included. She has beautifully crafted teak and holly interiors and like all Marlow Explorers, the wood for her interior was sawn from a single teak log producing some beautiful matching planks with a rich deep color and beautiful grain patterns that will stay gorgeous through the years. Utilizing the proprietary Marlow Explorer Velocijet Strut Keels, she gains superior stability, speed, comfort and safety in all sea conditions.

This vessel has been ceramic coated with Starke Liquid Thor Nano Ceramic Marine Coating.

Information & Features

Caterpillar C-18 (Engine 1)

Fuel Type: **Diesel**

Engine Hours: **950**

Power: **1015 hp**

Caterpillar C-18 (Engine 2)

Fuel Type: **Diesel**

Engine Hours: **950**

Power: **1015 hp**

Dimensions

LOA: **62 ft**

Beam: **19 ft 6 in**

Walkthrough

What's Next II is a stunning vessel. The color scheme throughout the vessel is brighter whites and more modern lighting, countertops, and fabrics. The exterior gel-coat is a Matterhorn White commonly used on modern Sport Fisherman. Her Hull is Awl-craft 2000 and superstructure is high gloss gel-coat. The cap-rails and brow have been painted in a complementary grey that eliminates all exterior bright-work. Her decks are done in a bright white with no contrasting non-skid color providing a clean modern look.

She is simply a stunning vessel with enclosed pilothouse, high bulwarks, gorgeous teak cap rails and teak decking along with the beautiful non-skid decks, recessed cleats on the bulwarks off the deck; one can easily see and feel the sea worthiness and safety of this vessel. When entering inside from the aft deck, this spacious vessel's beam of 19'6" makes her generous and lavish living space feel like your luxury home on the water. The feeling of opulence is what one feels when walking past her remarkable and specially designed interiors that grace the yacht throughout. This is the perfect stylish yacht for the cruising couple or for the new owners who wish to have a captain aboard and still have room for another couple and/or family to enjoy together with or without additional crew.

Salon

Upon entering the salon, you are immediately struck by the beautiful interior hand-crafted wide plank teak floors and customized teak cabinetry with opulent interior upgrades. The seating is L-shaped with heavy upholstery fabric. The TV is mounted in the starboard aft corner so you do not see it when you enter the salon from the aft doors. There are two comfortable chairs on the port side. The salon is very comfortable for six adults.

- Upgraded top of the line fabrics and finishes
- Custom Roman Shade Venetian blinds
- Satin teak salon floor
- Subzero UC-24 Beverage Center and ice maker Subzero wine cooler
- Large Samsung LED flat screen high-definition SAT TV Large ottoman style table
- Two aft opening doors to cockpit

Pilothouse

The main seating and dining table is aft in the pilothouse. This features a large U-shaped seating area and a beautiful teak table. This arrangement allows you to sit facing forward looking beyond the galley through the front windows.

Two watertight doors to each side aid in access to the deck when docking and give great ventilation when the air conditioning is not needed. The pilothouse has the same satin teak flooring and high-quality woodwork that appear throughout the rest of the yacht. This adds to the rich feel of the pilothouse. Steps lead down from this area to the master and guest cabins as well as leads upward to the fly-bridge.

- Watertight doors port and starboard
- 2 Ocean Air open hatches with upgraded sun and screen shades overhead
- U shaped settee with teak table

Galley

The lower helm was eliminated because she has a fully protected upper helm. This allows the creation of a galley forward with an island that you would be proud to own in a condo or home. The bright white countertops and stainless appliances give a clean modern feel

The galley area features the exquisite white Cambria countertop U-shaped with center island and stool, (2) sets of Sub Zero drawers for refrigeration and freezer with ice maker and a Wolf gas cook top, a convection/microwave oven and a Fisher Paykel dish washer. Forward to port is a beautiful staircase with recessed handrails leading to the three spacious staterooms below.

- Sky light by forward galley windows providing natural lighting below
- Wolf gas cook top
- Sharp stainless microwave/convection oven
- Kitchen Aid disposal
- 2 Subzero 30" Units under counter refrigerator/freezer with two drawers each
- Fisher Paykel dishwasher
- Franke stainless steel sink with decorative cutting board cover
- Satin teak sole

Companionway

- Spacious customized foyer entrance from pilothouse stairs – with abundant natural lighting from skylight above
- Wide landing area at the bottom of the stairs
- Full size GE washer and dryer Storage cabinet for linings

Master Stateroom

Upon entering this master stateroom, one walks through the gorgeous double doors. This specially designed extra- large full beam master suite has a custom king size bed which lies center-line with its large head and oversize head to starboard and a walk-in closet with vanity to port.

Abundant drawers, lockers and hanging cabinets exemplify the Marlow Yachts philosophy to leave no space unused. The quiet chilled water air-conditioning system flows A/C or heat gently throughout the entire space. Satin teak decks and beautiful teak bulkheads establish a warm and sumptuous feeling. This yacht has upgraded white headliner, wall treatments, and gel-coat in the heads for a more modern feel.

This full beam master stateroom offers a very pleasing look with abundant teak and satin finish; large, fixed portholes throughout, along with exquisite Shoji screens on both port and starboard sides for letting the natural light in as well as excellent privacy when docked at a T head. Beautiful custom sofa settee is located port side of the master berth with an additional cabinet built underneath for even more storage space.

- Custom settee with sofa storage port
- King size bed with storage drawers beneath
- Cedar lined hanging lockers
- Air conditioning (reverse cycle chilled water)
- Storage drawers under berth
- Large head with oversize shower
- MSR head and walk in closet with vanity
- Grohe fixtures
- Vacuflush toilet
- Large flat screen T.V.
- Direct Satellite T.V.
- Owner Safe

VIP Stateroom

This exceptional extra-large VIP stateroom is crafted for generous guest accommodations and is positioned forward in the adjacent hallway area. This space is complete with a center-line walk around queen berth, and en-suite head with stall shower. Ample head room adds to the feel of plentiful space for guests with separate air conditioning controls and entertainment controls. This voluminous stateroom with adjacent head is made light and airy by high overheads with large hatches. The queen-size bed, large cedar-lined hanging lockers, extensive drawers and smaller lockers are all finished in gorgeous teak.

- Large flat-screen TV
- Dometic digital air conditioning control
- Cedar lined closets
- Large en-suite head and shower with day head access

Starboard Guest

This stateroom features generous sized side by side bunks and a nightstand in between. There is a large hanging locker forward and a nice countertop with sink and mirror so guests can get ready without using the shared head all the time.

- Twin side by side bunks
- Flat screen TV
- Cedar lined hanging locker
- Sink
- Storage drawers
- Nightstand

Engine Room / Beach Club

The full size “standup” engine room area offers incredibly easy access to all equipment, engines, and systems which provide excellent lighting and is air-conditioned for comfort and convenience when inspecting and on performing maintenance. This engine room is very spacious and both outboard sides can be easily reached. Upgraded and redundant Onan 21.5KW generators is perfect for the long range cruiser. Many Marlow owners visit New England in the summer and perhaps the Bahamas in the winter. Rambler is perfect for long periods of at anchor living. There are 2 strategically placed entry positions to the engine room and crew quarters. One is exceptionally easy to access from a hydraulically activated hatch built into the cockpit seat. This is the "At Sea" entrance. This yacht also features a large transom door that opens to access the Beach Club. This is perfect for getting to beach chairs and related equipment when not running.

- Twin 1015hp C-18 Caterpillars Diesel Engines 950 hours
- Velocijet Strut Keels, protect propellers from grounding and provide excellent tracking abilities
- Naiad stabilizers
- 20 HP Electric bow and stern thrusters
- Hydraulic trim tabs
- Engine synchronizer
- 24 volt exhaust fans (2 intake 2 exhaust)
- High water/temperature/exhaust alarms
- Racor Dual crossover fuel filtration system on engines and generators with vacuum gauges
- Oil change system
- Electronic controls at upper and Aft deck station
- Color coded piping
- 900 GPD Sea Recovery Watermaker
- Dual (redundant) Sea Chest for all seawater inlets
- Air conditioning in engine room and crew quarters
- Chilled water reverse cycle air conditioning throughout
- AGM batteries
- 5 blade S class Nibral props
- Extensive noise insulation
- Stainless steel water heaters
- (2) Charles Isoboost Power Conditioner
- Port generator 675 hours, starboard generator 675 hours

Command Bridge

It is always a great day in the command bridge. With a drink fridge, ice maker, and a day head a few steps away, it is very comfortable running long days. This is the preferred area for passengers when underway with panoramic views of the ocean and waterways. In addition, the helm offers a grand living space separate from the main deck level, making her a more private space for yacht owners who spend months at a time on board. She features two beautiful Stidd helm chairs, full Garmin electronics package, large L-shaped settee with beautiful teak table, beverage combination, and refrigerator with ice maker. This area is accessible by stairs from the pilothouse and from the aft cockpit stairs. She boasts plenty of storage and space for entertaining family and guests.

- Stereo system with upgraded speakers
- Subzero UC-24 beverage center refrigerator with ice maker
- Gas grill on lift
- 1100 pound hydraulic davit with positioning and rotation-telescoping with remote
- Compass
- (2) Stidd ultra leather helm chairs
- Bow and Stern thruster controls
- CAT digital engine monitors
- Stabilizer control
- Engine synchronizer
- Windlass control
- CAT engine electronic displays
- Fuel and water tank monitor
- Trim Tabs

Aft Deck

Aft deck is covered with teak decking. She boasts beautiful twin settees with custom teak and holly table. There is a control station aft for docking with engine, bow and stern thruster controls and easy access to large swim platform through aft stern door.

- Custom, high gloss teak dining table
- Storage lockers under seating
- Stairs leading to swim platform
- Side boarding gates
- Storage cabinet with engine controls, bow and thruster controls, and sink
- Teak covered swim platform with foldaway swim steps allowing easy access to the water

Deck and Hull Equipment

The design of this yacht makes cruising with only two people on board an easy task. High bulwarks with full walk around decks and the Portuguese bridge allows complete access to the main deck. All of the main-deck is finished with teak decks. The bottom is designed with twin strut keels to help protect the props and also provide excellent tracking ability.

- 14 ft. Brig Tender, 40hp Honda Four Stroke
- Large bow seat with storage under
- Laminated heat-tempered glass windows for offshore use
- Watertight pilothouse and rear doors
- Common drain system from bow to stern to help eliminate streaks
- 1100 pound davit w/hydraulic up/down positioning and telescoping
- FRP swim platform with teak inlay and concealed swim ladder
- Heavy duty offshore windshield wipers/washers
- Twin Lewmar V6 vertical rope/chain windlasses
- Stainless steel anchors with 300' chain
- Fresh and seawater wash downs forward and aft
- Awl-craft 2000 painted hull, custom Matterhorn white gel-coat superstructure
- Painted cap-rails no exterior varnish
- Portuguese bridge
- 2 x Bulwark and 2 x transom gates
- Pop up dinghy cleats on swim platform
- All opening port lights and hatches with screens
- Courtesy lights
- Hot and cold shower at transom
- Kahlenberg air horns, dual trumpet
- (5) SS rod holders
- Carbon fiber N rails (5)

Navigation Equipment

- Yacht Controller
- Twin 22" Garmin chart plotters 6' Open array radar
- Garmin Autopilot Garmin AIS Satellite weather
- Garmin Sunder Module ICOM VHF Radios Garmin Camera Network
- WIFI Extender, Cell Broadband Internet Upgraded Smart TV's with Sonos sound JL Audio Speaker Upgrades
- Siren Security System

Electrical

- 3500 Watt inverter wired to all outlets and refrigeration
- Charles Iso Boost Power conditioners
- Twin 21.5kW Onan generators
- (2) Glendinning cable masters in stern and 2 50A bow inlets
- AGM no maintenance batteries
- Electrical bonding system
- 24V lighting system w/Italian and Danish brass lighting fixtures
- AC/DC distribution panel w/magnetic circuit breakers in pilot house
- AC and DC voltage meters in pilot house
- Battery parallel switches
- 24 Volt battery charger

Broker Comments

This extremely well equipped, low hours Marlow Explorer 62E-CB is built with exceptionally high end mechanical options for simple and safe operating capabilities. With the fully enclosed command bridge, day head, and Yacht Controller she is one of the best outfitted yachts in her size range. She comes fully loaded with both bow and stern thrusters, stabilizers, (2) Onan 21.5KW generators and chilled water air-conditioning in multiple zones. Her engines will give you a 20-21 knot cruise with top speed of around 25+kts. Her 2260 gallons of fuel will let you cruise at 8 knots for 2200 miles, offering the best of both fast and slow cruising!

Disclaimer

The Company offers the details of this vessel in good faith but cannot guarantee or warrant the accuracy of this information nor warrant the condition of the vessel. A buyer should instruct his agents, or his surveyors, to investigate such details as the buyer desires validated. This vessel is offered subject to prior sale, price change, or withdrawal without notice.



Swim platform



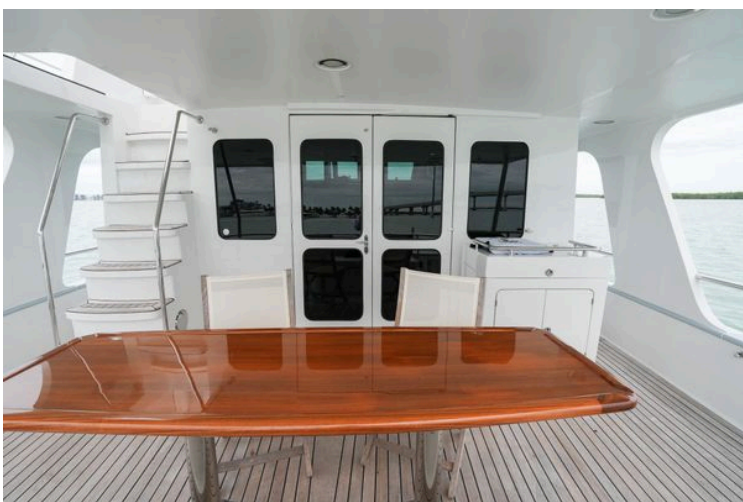
Transom Garage Door



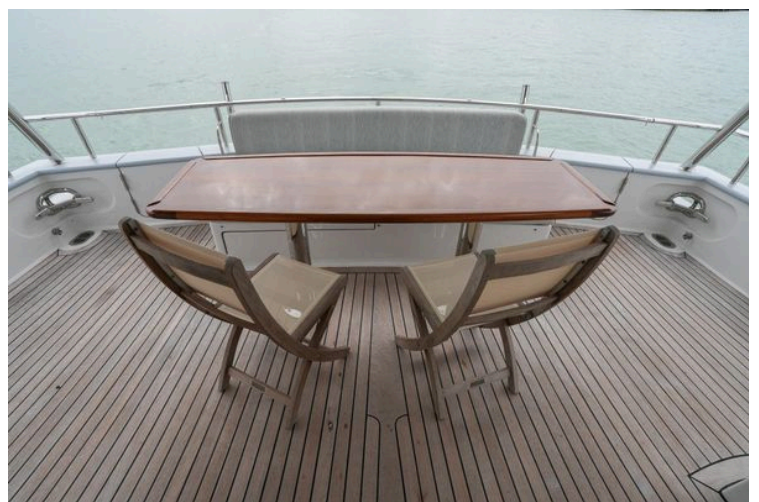
Cockpit facing starboard



Cockpit facing port



Cockpit facing Forward



Cockpit facing Aft



Cockpit sink and docking station



Salon facing aft 2



Salon facing Port



Salon facing starboard



Salon Forward 2



Luxurious interior of 2022 Marlow Explorer 62E yacht with elegant seating and decor.



Luxurious interior of 2022 Marlow Explorer 62E yacht with plush seating and elegant decor.



Salon facing aft



Salon artwork



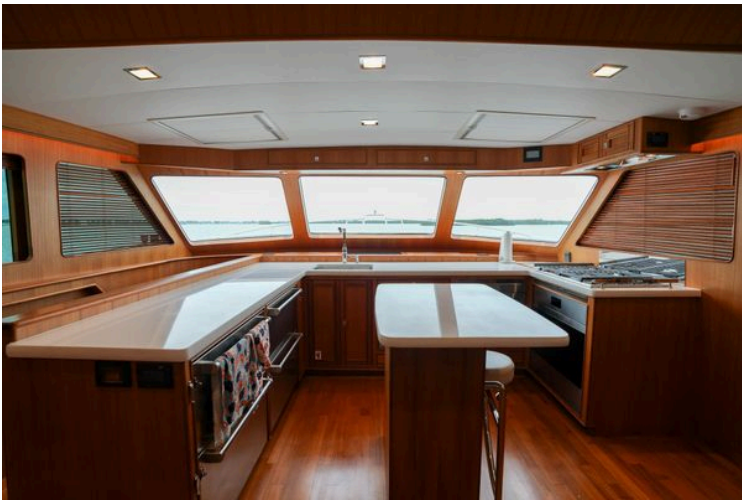
Salon facing forward 2



Salon to galley stairs



U-shaped dinette



Galley facing forward



Galley facing port



Galley facing aft



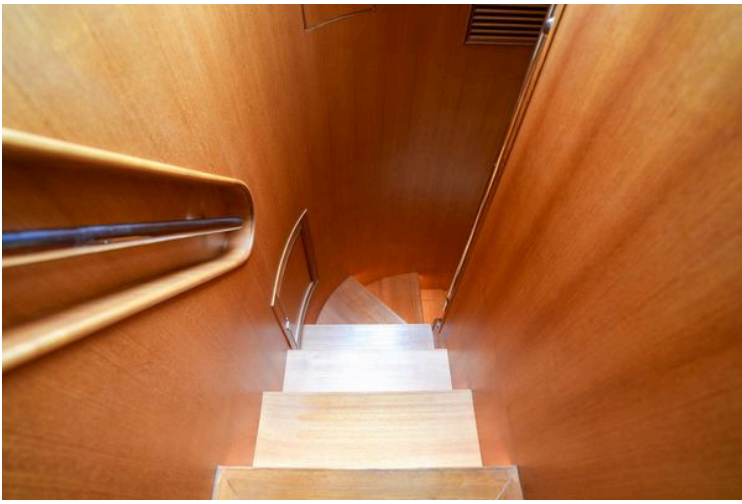
Galley facing starboard



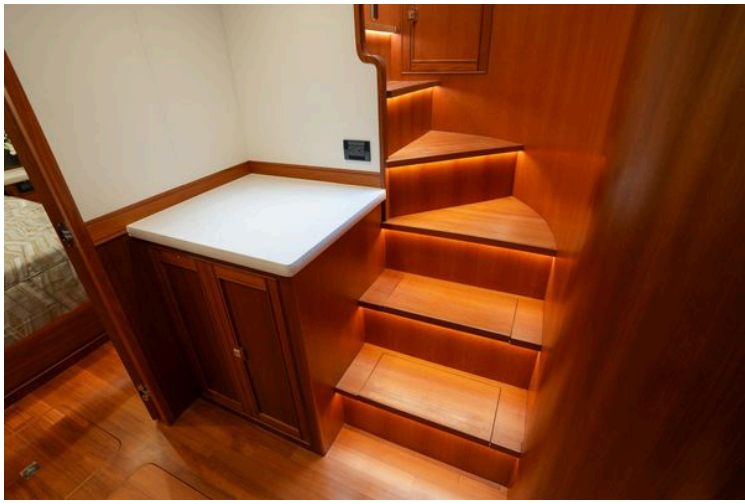
Galley appliances



Galley cooktop and oven



Staircase to staterooms



Companionway staircase



Companionway facing aft



Companionway facing forward



Laundry



Luxurious bedroom interior of 2022 Marlow Explorer 62E yacht with elegant bedding and wood finishes.



MSR berth



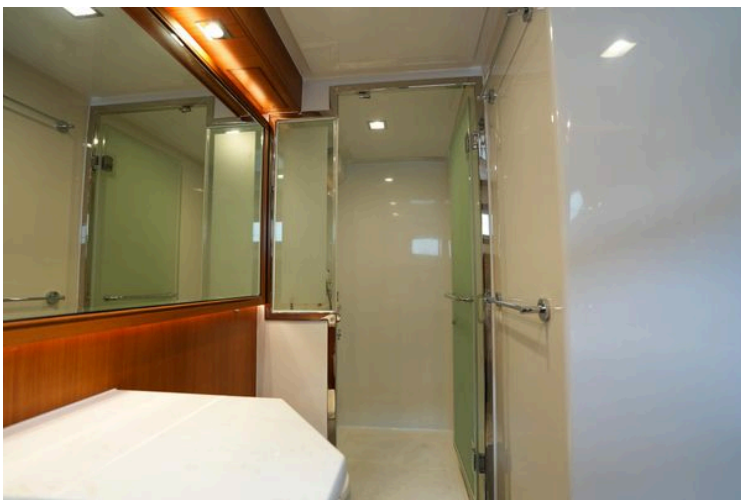
MSR facing forward port



MSR facing port



MSR head facing aft



MSR head and shower facing port



MSR head facing starboard



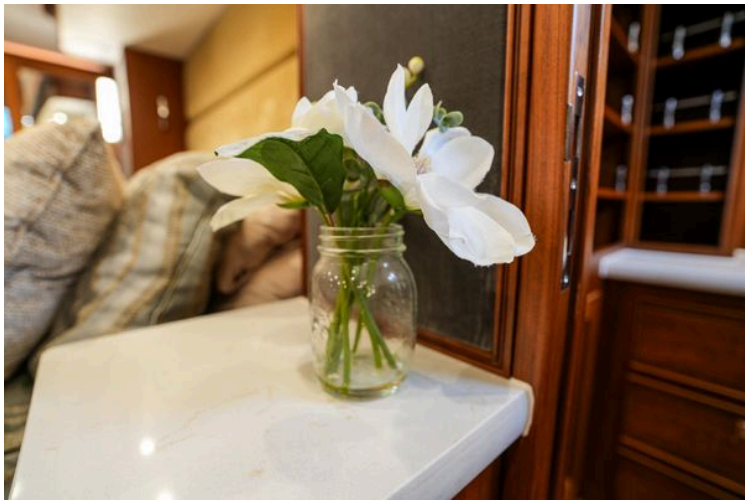
MSR facing forward starboard



Luxurious bedroom interior of 2022 Marlow Explorer 62E yacht with elegant wood finishes.



Luxurious wooden interior of 2022 Marlow Explorer 62E yacht with ample shelving and storage.



MSR flower detail



MSR sconce detail



Port MSR bench



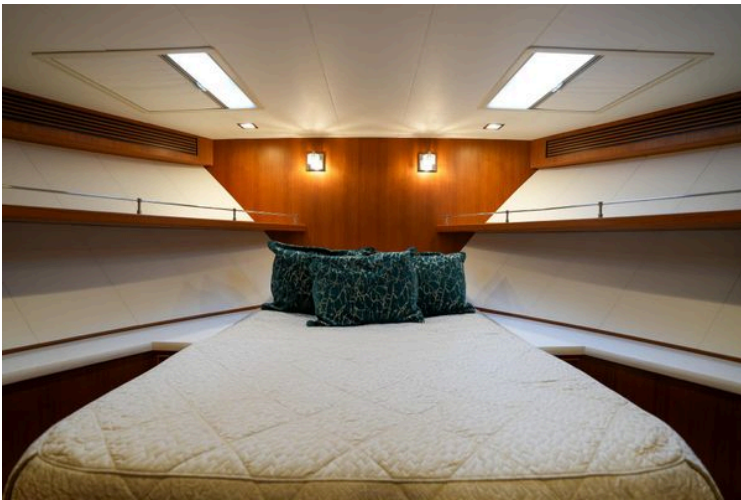
Starboard guest bunks facing aft



Starboard guest bunks facing forward



VIP facing aft



VIP berth



VIP facing starboard



VIP sconce detail



Guest head



Guest head and shower



Staircase to CB



Port CB refrigerator



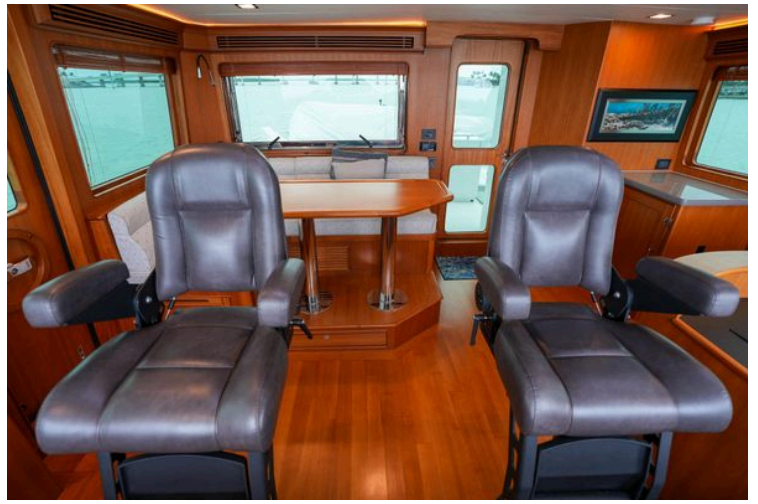
Control panel of 2022 Marlow Explorer 62E yacht with navigation screens and steering wheel.



CB helm facing starboard



CB facing port aft



CB facing aft



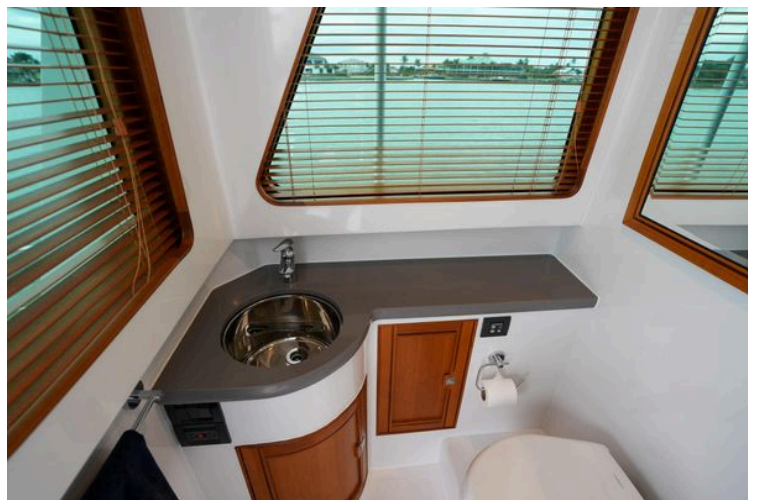
CB settee facing starboard



CB Settee



Day head



Day head 2



Starboard CB forward profile



Starboard CB forward



Starboard CB aft



Upper aft deck facing aft



Upper aft deck facing forward (2)



Upper aft deck facing starboard



Cozy seating area on 2022 Marlow Explorer 62E yacht with ocean view.



Upper aft deck grill locker



Upper aft grill



Port CB forward



Control panel of 2022 Marlow Explorer 62E yacht, featuring sleek design and modern controls.



Port CB walkway facing aft



Port walkway facing forward



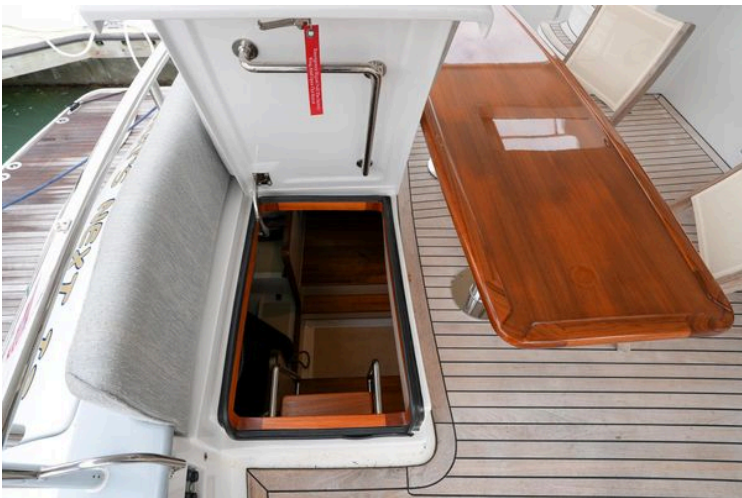
Side deck view of 2022 Marlow Explorer 62E yacht on calm waters.



Starboard walkway facing forward



Starboard walkway facing aft



Engine and Crew Access



Crew Bunk 2



Port Crew



Crew Head



Engine Room Facing Forward



Engine Room Facing Aft



Watermaker



Port Gen



Starboard Gen



Starboard Crew Bunk