

66 ft 2014 Marlow Explorer 66E, BEN'S BARGE  
\$2,590,000  
Stuart, FL



**Boat Details**

Make:	<b>Marlow</b>	Class:	<b>Motor Yacht</b>
Model:	<b>Explorer 66E</b>	Hull Material:	<b>Composite</b>
Year:	<b>2014</b>	Beam:	<b>19 ft 5 in</b>
Price:	<b>\$2,590,000</b>	Name:	<b>BEN'S BARGE</b>
Condition:	<b>Used</b>	Fuel Type:	<b>Diesel</b>



**Marlow Sales Department | Marlow Marine Sales, Inc.**  
Marlow Marine Sales, Inc., Snead Island, Florida, United States  
Tel: 941-729-3370 Fax: 941-729-4955  
sales@marlowmarine.com

## Description

2014 Marlow Explorer 66E – Turn-Key Luxury Explorer Ready for Your Next Adventure!

Own the Ultimate Long-Range Cruiser – Meticulously Maintained, Extensively Upgraded, and Priced to Sell

This stunning 2014 Marlow Explorer 66E stands out as one of the finest examples on the market today. Lovingly cared for by knowledgeable owners since new, she combines Marlow's legendary seaworthiness and composite construction with an impressive list of premium upgrades that make her truly turn-key. Whether you're planning extended voyages to remote destinations or relaxed coastal cruising with family and friends, this vessel delivers unmatched comfort, performance, and reliability. Don't miss this rare opportunity to step aboard a proven explorer that's ready to create lifelong memories—schedule your private viewing before she's gone.

- Proven Power & Efficiency: Twin Caterpillar C-18 1150HP engines with major 2000-hour service completed (November 2020)
- Zero-Compromise Stabilization & Maneuverability: Naiad 252 at-rest stabilizers, velocijet strut system, 20HP bow & stern thrusters, plus Yacht Controller for effortless docking
- Self-Sufficient Cruising: 900 GPD watermaker, twin 21.5kW Onan generators, and massive 3,000-gallon fuel capacity
- Luxury Appointments Throughout: Flag Blue Awlgrip hull, premium Ultraleather interiors, custom granite counters, and rare four-stateroom layout
- Included 13' Boston Whaler Tender (2014 with 40HP Mercury) – ready for beach excursions or fishing trips
- State-of-the-Art Electronics: Full Garmin suite, FLIR, SAT TV, and wireless connectivity

These thoughtful upgrades—representing hundreds of thousands in enhancements—elevate this yacht far above standard models, delivering exceptional value in today's market.

### **Main Salon** – Your Elegant Floating Living Room

Enter through robust stainless sliding doors into a warm, inviting salon that exudes timeless sophistication. Rich teak joinery, classic teak-and-holly sole, and oversized windows create an atmosphere perfect for relaxing or entertaining. The intelligent layout includes a spacious L-shaped settee with hidden storage, dedicated desk area, plush recliners, and a fully equipped wet bar with SubZero wine cooler and icemaker. Forward, a custom buffet hides the new 50" Samsung smart TV—ideal for movie nights at anchor.

This is where memories are made: sunset cocktails with friends, quiet mornings with coffee, or lively gatherings that flow seamlessly indoors and out.

### **Country-Kitchen Galley & Dining** – Chef's Dream with Panoramic Views

Step up to the bright, open galley and dining area—the heart of onboard living. Extensive Black Galaxy granite counters, premium appliances (dual SubZero fridge/freezers, Dacor cooktop & oven, Miele dishwasher), and abundant storage make meal prep a pleasure, even for discerning chefs. The large U-shaped dinette offers elevated seating and 360° views, turning every meal into a scenic experience.

Imagine preparing gourmet dinners while watching dolphins play alongside, or hosting unforgettable dinner parties under the stars.

### **Cockpit & Decks** – Seamless Indoor/Outdoor Living

The teak-soled cockpit provides sheltered seating with varnished tables, plus a convenient docking station. Wide side decks and the protected swim platform with N-Rails make boarding safe and easy. Every detail reflects Marlow's commitment to quality and practicality.

### **Command Bridge** – Captain's Paradise with Unmatched Visibility

Command from twin Stidd helm chairs with three large Garmin displays at your fingertips. Full redundancy (autopilot, Yacht Controller, FLIR) ensures confident navigation anywhere. Aft, generous lounge seating, wet bar, and day head create the perfect social space while underway.

This is where you'll feel truly in control—whether threading through tight passages or setting course for distant horizons.

### **Upper Aft Deck** – Premier AI Fresco Entertainment Area

The expansive boat deck features a custom bar with BBQ grill, sink, icemaker, and deep freezer—everything needed for effortless outdoor dining. The 1600lb Aritex davit launches the included Boston Whaler in minutes, opening up endless exploration possibilities.

Picture grilling fresh catch while anchored in a secluded cove, surrounded by family and friends as the sun sets.

**Accommodations** – Four Private Staterooms for Ultimate Comfort

- Full-Beam Master: Serene king berth retreat with his-and-hers access (large head with rain shower + walk-in cedar closet)
  - Forward VIP: Spacious queen with private en-suite and additional upper berths
  - Port Guest: Twin berths with en-suite head
  - Starboard Guest/Laundry: Versatile fourth stateroom with full-size Whirlpool washer/dryer
  - Separate Crew Quarters: Private aft access with queen berth, head, and storage
- Custom bamboo & teak soles, birdseye maple walls, and premium finishes throughout create an atmosphere of understated elegance.

Final Opportunity

“BEN’S BARGE” has been cherished by owners who spared no expense maintaining her to the highest standards. Now offered for immediate sale, she represents exceptional value—an extensively upgraded, proven explorer ready to take you anywhere in complete comfort and style.

Serious inquiries only. This is the Marlow 66E you’ve been waiting for—contact us today to arrange your inspection and secure your future on the water. Vessels of this caliber and condition rarely stay available long.

Information & Features

**Caterpillar C18 (Engine 1)**

Engine Type:	Inboard	Power:	1150 hp
Fuel Type:	Diesel		
Engine Hours:	3035		

**Caterpillar C18 (Engine 2)**

Engine Type:	Inboard	Power:	1150 hp
Fuel Type:	Diesel		
Engine Hours:	3035		

**Dimensions**

LOA:	69 ft 4 in
Beam:	19 ft 5 in

## Notable Upgrades and Recent Services

- New Dometic chillers (2023)
- Starlink system (2024)
- Fusion stereo system (2025)
- Wi-Fi condenser system
- AGM system (2025)
- New AGM batteries (2022)
- New TracVision TV antenna
- New anchor windlass (2025)
- Varnish by Willis Marine (2024)
- Twin 1150 HP Caterpillar C-18 engines with 1,000-hour service completed
- Twin 21 kW Onan generators
- 20 HP bow thruster
- 20 HP stern thruster
- Yacht Controller
- AGM batteries
- 900 GPD watermaker
- Command Bridge option with day head
- Aritex 1,600 lb davit
- Naiad fin stabilizers (Model 252)
- Underwater lights
- Chilled water air conditioning with new chillers
- New Samsung salon TV
- Awlgrip painted hull (Flag Blue)
- Oval exterior stainless hardware package
- Upgraded interior Ultraleather fabrics
- 13' Boston Whaler tender with 40 HP Mercury outboard
- Upgraded granite countertops throughout
- Seatorque oil-filled shaft system (serviced 2022)
- N-rails on swim platform
- Robust Garmin navigation and electronics package
- FLIR camera
- Twin STIDD captain's chairs
- BBQ grill
- Two Sub-Zero refrigerator/freezer combos
- Washer and dryer
- Custom bamboo and teak flooring in lower cabin
- Custom maple and Ultraleather walls in lower cabin
- Custom four-stateroom layout

## Deck and Cockpit

You can board “BEN’S BARGE” from the swim platform or from one of the boarding gates on either side amidship. From the swim platform looking forward, you will notice the unique divided transom with a single row of steps going up the middle of the stern onto the cockpit. Once in the cockpit, you will find two separate seating areas in the starboard and port aft corners of this space, each with a varnished teak table securely fixed to the deck. On the forward starboard corner of the cockpit, there is storage space along with a docking station equipped with throttle controls and bow and stern thrusters. On the port side, steps lead up to the upper aft deck, with a door beneath these steps providing access to the crew quarters and engine room.

- Teak decks
- Fender holders
- Upgraded oval exterior stainless hardware package
- Twin Maxwell 3500 windlasses (new 2025)
- N-rails on swim platform
- Rod holders (4)
- New anchor windlass (2025)



## Engines and Mechanical

- Twin Caterpillar C18 1150 HP engines – 3,035 hrs
- Two 21.5kW Onan generators in custom sound shields – 2,330 hrs
- Yacht Controller
- 900 GPD Sea Recovery Watermaker
- 2x Outback inverter and charger
- Centaur 24V 60AMP Charger
- Centaur 12V 40AMP Charger
- Two Charles Isoboost
- Side Power Bow Thruster (20HP)
- Side Power Stern Thruster (20HP)
- 2 Forward and 2 Aft 50 Amp Shore Power inlets – all with Glendenning Cablemasters
- Backlighted electrical panels
- Carbon monoxide detectors in all berthing spaces
- Seatorque oil filled shaft system with thrust plate
- Soft motor mounts
- Two cross-connected sea chest sea water intakes with cleanouts
- Drypoint demister air intake system
- FRP fuel tank (3,000 gallons) with sump and cleanout
- Fuel manifold and proprietary sight gauge
- Dual Racor fuel filters with pressure gauges for each engine and generator
- Fire suppressant system
- Engine room lead/foam sound and heat insulation system
- 4x 220V high volume engine room blowers
- Color coded piping
- ESI fuel polisher system
- Polished stainless-steel engine beds with carbon fiber stringers
- Gel coated bilges
- Oil change system
- LED engine room lighting
- Common drainage system from bow to stern collects deck drain, scupper and sump discharges
- Underwater exhaust
- Underwater lights
- AGM batteries
- Air-conditioned engine room and crew quarters
- Morse electronic controls
- Brownies dive compressor (100' hose reel)
- Naiad 252 model stabilizers

## Salon

Entering the salon aft through large double doors, immediately you feel the open concept. Teak and holly flooring ties in with the teak walls and cabinetry throughout. To starboard there is a large settee with ample storage underneath with an attached desk just forward of this seating area. To port, "BEN'S BARGE" has two comfortable recliners separated by a teak table.

The aft starboard corner of the room houses a wine cooler under counter with glass storage above. The aft port corner has a bar-style setup that includes a refrigerator with ice maker, sink, bottle storage under counter, and additional glass storage above the counter. The center of the room is accented by a custom-built teak coffee table. As you look to the very forward section of the room, you can appreciate the buffet cabinet with 50" Samsung LED TV behind a tambour door.

- Subzero wine cooler
- Subzero beverage center fridge with ice maker
- Teak blinds
- Black Galaxy countertop (salon bar)

## Galley and Dining

Forward is the galley and dinning area. 360 degree views from this dining area allow for incredible views and a relaxing environment. Black Galaxy countertops offer plenty of surface area in this space with ample storage all the way around.

Just forward of the galley you will find a large U-shaped dining area with comfortable seating and table space with additional storage to both port and starboard.

- 2x Subzero refrigerator/freezer combo
- Dacor Cooktop
- Dacor Oven
- Miele Dishwasher
- Disposal at sink
- Trash compactor
- Convection Microwave
- Franke Sink
- Teak blinds
- Black Galaxy countertops

## Command Bridge

The Command Bridge on "BEN'S BARGE" provides a 360 degree view giving you great sight lines while navigating. Fully equipped with an array of navigational tools including 3 large Garmin screens, Autopilot, Yacht Controller, VHF radios, FLIR camera, and numerous others, she is a dream vessel for any captain.

There are 2 Stidd captains' chairs mounted at the helm with all navigational equipment at your fingertips. On the port aft corner of this space there is a large Subzero refrigerator and to starboard you will find a large seating area ideal for lounging or dining. Ample storage throughout the entire command bridge.

- Day head accessible from outside of Command Bridge
- Headhunter Royal Superflush head
- Teak blinds
- Black Galaxy countertop (bar)
- Teak and holly flooring

## Upper Aft Deck

Aft of the command bridge, the upper aft deck on “BEN’S BARGE” houses an outdoor entertainment area that includes a grill, sink, plenty of storage, deep freezer, and a big deck space that holds the tender while underway.

Another docking station equipped with throttle controls and bow and stern thrusters is located to port inside a covered compartment.

- Davit Aritex (1,600 lbs)
- 13' Boston Whaler Tender with 40HP Mercury (2014)
- Custom bar cabinet
- BBQ grill
- Ice maker
- Sink
- Custom built-in deep freezer

## Electronics

- Three (3) 15" Garmin 8215 touch screen displays
- 12 KW, 6-foot array radar
- 6 KW, 4-foot array 24-mile radar
- Full Garmin electronics package with Garmin Autopilot and Yacht Controller
- Garmin GHP-20 Autopilot
- Garmin Marine WiFi adapter kit
- Garmin GSD-24 Digital Black Box Sounder
- Speed, depth, and wind independent displays
- Garmin AIS-600
- Garmin GMI 20 Instrument (3)
- Garmin GXM51 XM Satellite Antenna
- 2x ICOM M604 VHF with hailer horn
- KVH Tracision HD7 SAT TV – New 2025
- FLIR Thermal Imaging Camera System (M324XP)
- Geosat Rogue wave ethernet with 8' WiFi antenna
- KVH Complete Tracphone 3IP system with V7 dome and Uniden cordless phone with SmartUPS
- Garmin Marine Cameras (3)
- Audio: Fusion Audio with JL speakers – new 2025

## Master Stateroom

The master stateroom is full beam and provides warmth and comfort. The king size bed is centerline with abundant drawer storage and hanging lockers to either side of the bed. To starboard there is a well-lit vanity and to port you find a comfortable bench/seating area with built-in storage.

Additional storage is located in drawers beneath the bed and in the deck below. Shoji screens to port and starboard permit light to enter the stateroom while providing privacy in marinas. Aft of the master stateroom, “BEN’S BARGE” has a large master head with shower which can be accessed from the starboard side. The aft port side gives you access to a walk-in closet with plenty of drawers and counter space as well as hanging racks.

- Camphor burl wood on countertop surfaces
- Birdseye maple walls
- Bamboo and teak floors
- Grohe rainshower in master head shower
- Grohe chrome faucet
- Headhunter Royal Superflush head
- Samsung 32" LED TV
- Cream Marfil on head countertop



## VIP Stateroom

The VIP is spacious and welcoming for your guests. A large elevated bed sits centerline with drawer storage underneath. Hanging lockers are found to either side of the bed and two additional bunks are located to port and starboard above the bed. This room has private access to its own VIP head.

- Headhunter Royal Superflush head
- Samsung 29" LED TV
- Birdseye maple walls
- Bamboo and teak floors
- Cream Marfil on head countertop

## Port Guest Stateroom

This stateroom provides two single berths, hanging locker, and drawer storage. Large portholes allow natural light to brighten the room. The en-suite guest head has plenty of storage for toiletries and a large walk-in shower.

- Headhunter Royal Superflush head
- Samsung 22" LED TV
- Birdseye maple walls
- Bamboo and teak floors
- Cream Marfil on head countertop

## Starboard Guest Stateroom

This stateroom was built as a fourth stateroom that also serves as a laundry room. Full-size Whirlpool washer and dryer are conveniently located in this space with a skylight overhead that brings in much natural light to this room and landing area. There is abundant storage under the single berth and a sliding curtain on tracks encloses the room if privacy is desired by your guest.

- Samsung 22" LED TV
- Birdseye maple walls
- Bamboo and teak floors

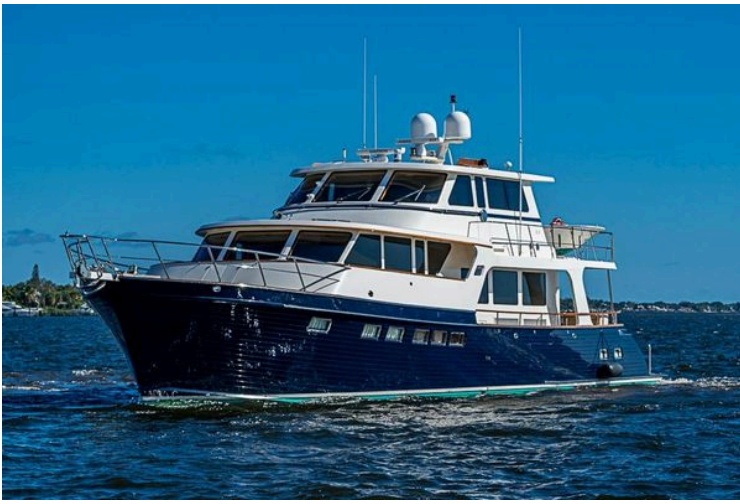
## Crew Quarters

The crew quarters has a separate private entrance from the rest of the sleeping areas. This space is configured with a Queen sized single berth, head with shower, hanging lockers, drawers and bins, refrigerator, microwave, and TV to the starboard side. The port side was left open for storage and spare parts.

- Samsung 22" LED TV
- Isotherm refrigerator
- Microwave

## Disclaimer

The Company offers the details of this vessel in good faith but cannot guarantee or warrant the accuracy of this information nor warrant the condition of the vessel. A buyer should instruct his agents, or his surveyors, to investigate such details as the buyer desires validated. This vessel is offered subject to prior sale, price change, or withdrawal without notice.



2014 Marlow Explorer 66E yacht cruising on open water under clear blue skies.



2014 Marlow Explorer 66E yacht cruising on open water under clear blue skies.



2014 Marlow Explorer 66E yacht cruising on open water under clear blue skies.



2014 Marlow Explorer 66E yacht deck with ocean view and clear blue sky.



2014 Marlow Explorer 66E yacht docked at marina under blue sky.



Outdoor sink on 2014 Marlow Explorer 66E yacht, docked with ocean view.





Luxurious 2014 Marlow Explorer 66E yacht deck with elegant wood finish and modern amenities.



Luxurious 2014 Marlow Explorer 66E yacht deck with seating, docked at marina.



Luxurious 2014 Marlow Explorer 66E yacht deck with seating, docked at marina.



2014 Marlow Explorer 66E yacht docked at marina under blue sky.



2014 Marlow Explorer 66E yacht docked at marina under blue sky.



2014 Marlow Explorer 66E yacht deck with control panel and ocean view.





Outdoor kitchen on 2014 Marlow Explorer 66E yacht with grill and sink.



2014 Marlow Explorer 66E yacht deck with sleek design and modern amenities.



2014 Marlow Explorer 66E yacht deck with sleek white design and modern windows.



Luxurious interior of 2014 Marlow Explorer 66E yacht with modern navigation equipment.



Luxurious 2014 Marlow Explorer 66E yacht helm with wooden finish and advanced navigation systems.



Pilothouse of 2014 Marlow Explorer 66E yacht with wooden steering wheel and navigation screens.





Luxurious interior of 2014 Marlow Explorer 66E yacht with wood finishes and plush seating.



Control panel of 2014 Marlow Explorer 66E yacht with navigation screens and equipment.



Luxurious interior of 2014 Marlow Explorer 66E yacht with elegant wood finishes and plush seating.



Luxurious interior of 2014 Marlow Explorer 66E yacht with plush seating and wooden accents.



Luxurious interior of 2014 Marlow Explorer 66E yacht with elegant wood finishes and seating.



Interior of 2014 Marlow Explorer 66E yacht with open fridge and wooden finishes.





2014 Marlow Explorer 66E yacht bathroom interior with wooden accents and window blinds.



Luxurious bathroom in 2014 Marlow Explorer 66E yacht with wooden accents and modern fixtures.



Luxurious interior of 2014 Marlow Explorer 66E yacht with elegant wood finishes.



Luxurious interior of 2014 Marlow Explorer 66E yacht with elegant seating and wooden accents.



Luxurious interior of 2014 Marlow Explorer 66E yacht with leather seating and wooden accents.



Luxurious interior of 2014 Marlow Explorer 66E yacht with elegant wood finishes.





Luxurious interior of 2014 Marlow Explorer 66E yacht with wooden cabinetry and wine cooler.



Luxurious galley area in 2014 Marlow Explorer 66E yacht with open fridge and sink.



Luxurious interior of 2014 Marlow Explorer 66E yacht with wood paneling and modern furnishings.



Luxurious interior of 2014 Marlow Explorer 66E yacht with wood finishes and modern amenities.



Luxurious wooden kitchen interior of 2014 Marlow Explorer 66E yacht.



Luxurious kitchen interior of 2014 Marlow Explorer 66E yacht with wooden cabinetry and modern appliances.





Open dishwasher in the 2014 Marlow Explorer 66E yacht's wooden interior.



Luxurious kitchen interior of 2014 Marlow Explorer 66E yacht with wooden cabinetry and modern appliances.



Luxurious 2014 Marlow Explorer 66E yacht kitchen with wooden cabinetry and modern appliances.



Luxurious wooden interior of 2014 Marlow Explorer 66E yacht kitchen.



Luxurious interior of 2014 Marlow Explorer 66E yacht with elegant wood and leather seating.



Luxurious wooden interior of 2014 Marlow Explorer 66E yacht with elegant staircase.





Luxurious interior of 2014 Marlow Explorer 66E yacht with wood finishes and plush seating.



Luxurious cabin interior of 2014 Marlow Explorer 66E yacht with elegant wood finish.



Luxurious cabin interior of 2014 Marlow Explorer 66E yacht with elegant wood finishes.



Luxurious cabin interior of 2014 Marlow Explorer 66E yacht with elegant wood finish.



Luxurious interior of 2014 Marlow Explorer 66E yacht with cozy seating and wooden cabinetry.



Luxurious wooden interior of 2014 Marlow Explorer 66E yacht with desk and seating.





Luxurious cabin interior of 2014 Marlow Explorer 66E yacht with wood paneling and cozy bedding.



Luxurious bathroom interior of 2014 Marlow Explorer 66E yacht with wooden cabinetry and modern fixtures.



Luxurious bathroom in 2014 Marlow Explorer 66E yacht with wooden cabinetry and modern fixtures.



Luxurious bathroom in 2014 Marlow Explorer 66E yacht with wooden accents and modern fixtures.



Luxurious cabin interior of 2014 Marlow Explorer 66E yacht with cozy bed and wooden accents.



Luxurious cabin interior of 2014 Marlow Explorer 66E yacht with floral bedding.





Luxurious cabin interior of 2014 Marlow Explorer 66E yacht with TV and ensuite bathroom.



Luxurious bathroom in 2014 Marlow Explorer 66E yacht with shower and elegant fixtures.



Luxurious bathroom in 2014 Marlow Explorer 66E yacht with wood accents and glass shower.



Cozy twin cabin in 2014 Marlow Explorer 66E yacht with wood paneling and nautical decor.



Luxurious cabin interior of 2014 Marlow Explorer 66E yacht with twin beds and ensuite bathroom.



Luxurious bathroom in 2014 Marlow Explorer 66E yacht with elegant wood cabinetry.





Shower area in 2014 Marlow Explorer 66E yacht with modern fixtures.



Interior cabin of 2014 Marlow Explorer 66E yacht with cozy bed and wooden finishes.



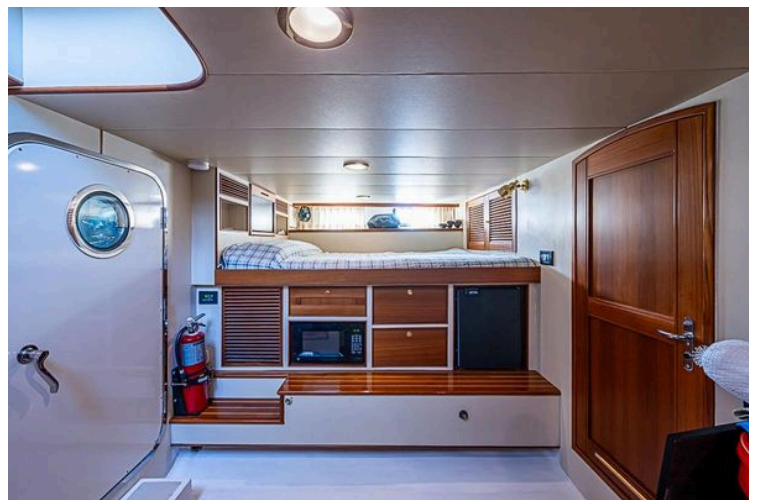
Stacked washer and dryer in 2014 Marlow Explorer 66E yacht laundry area.



Laundry area and cozy cabin in 2014 Marlow Explorer 66E yacht.



Bathroom interior of 2014 Marlow Explorer 66E yacht with sink and mirror.



Cozy cabin interior of 2014 Marlow Explorer 66E yacht with bed, storage, and porthole.

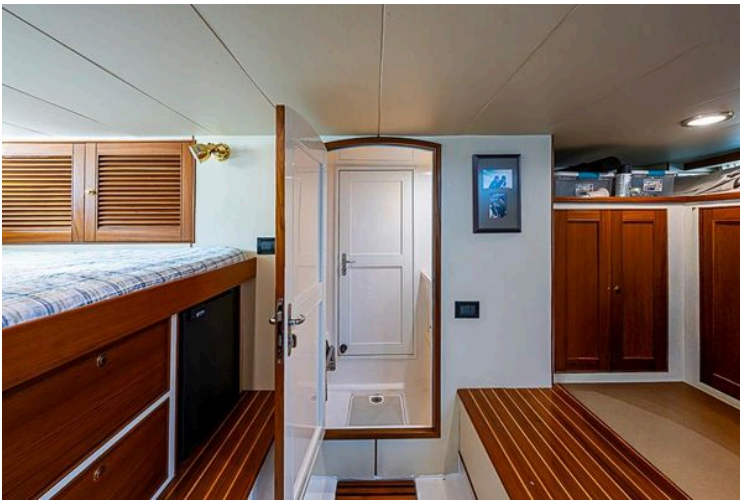




Interior of 2014 Marlow Explorer 66E yacht, featuring a cozy cabin and engine room access.



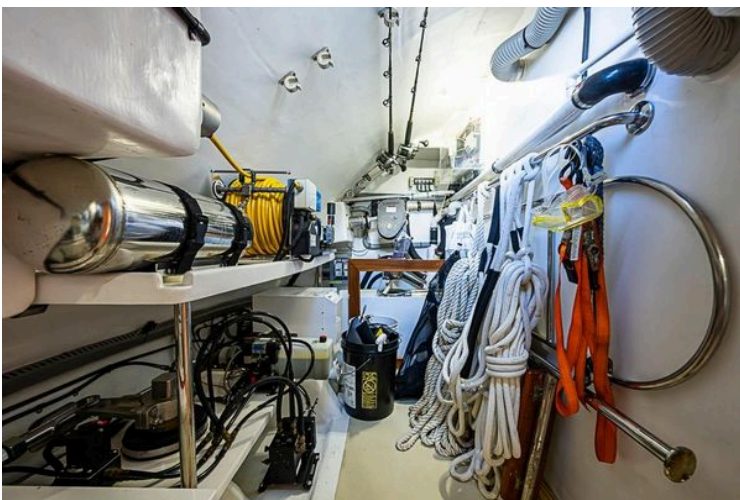
Cozy cabin interior of 2014 Marlow Explorer 66E yacht with bed and storage.



Interior of 2014 Marlow Explorer 66E yacht with wooden cabinetry and cozy sleeping area.



Engine room of 2014 Marlow Explorer 66E yacht, featuring equipment and storage.



Engine room of 2014 Marlow Explorer 66E yacht with equipment and ropes.



Engine room of 2014 Marlow Explorer 66E yacht, showcasing advanced machinery and equipment.





Engine room of 2014 Marlow Explorer 66E yacht, showcasing complex machinery and systems.



Engine room of 2014 Marlow Explorer 66E yacht, featuring advanced mechanical systems.



Engine room of 2014 Marlow Explorer 66E yacht, showcasing machinery and equipment.



Engine room of 2014 Marlow Explorer 66E yacht, showcasing advanced machinery and equipment.