

97 ft 2011 Marlow Explorer, RAT PACK

**\$3,200,000**

Palm Beach, FL



### Boat Details

|            |                    |                |                       |            |              |
|------------|--------------------|----------------|-----------------------|------------|--------------|
| Make:      | <b>Marlow</b>      | Hull Material: | <b>Fiberglass</b>     | Max Speed: | <b>25 kn</b> |
| Model:     | <b>Explorer</b>    | Beam:          | <b>21 ft</b>          | Max Draft: | <b>6 ft</b>  |
| Year:      | <b>2011</b>        | Boat Location: | <b>Palm Beach, FL</b> |            |              |
| Length:    | <b>97 ft</b>       | Name:          | <b>RAT PACK</b>       |            |              |
| Price:     | <b>\$3,200,000</b> | Guest Cabins:  | <b>4</b>              |            |              |
| Condition: | <b>Used</b>        | Guest Heads:   | <b>5</b>              |            |              |
| Class:     | <b>Motor Yacht</b> | Fuel Type:     | <b>Diesel</b>         |            |              |



**Marlow Sales Department | Marlow Marine Sales, Inc.**

Marlow Marine Sales, Inc., Snead Island, Florida, United States

Tel: +1 (941) 729-3370 Fax: 941-729-4955

sales@marlowmarine.com

## Description

“RAT PACK” is the best example of a 97’ Marlow Explorer on the market. She has been maintained and updated to the highest standards since new.

Over \$1.5M has been invested in the past few years, including (but not limited to) a new paint job, new teak, new electronics, a new tender, new interior/exterior soft goods, full mechanical and hydraulic services, etc.

She has both the preferred open flybridge arrangement with upper and lower helms as well as the 4 cabin layout with two full-beam staterooms. The fully serviced CAT C32s provide a 20-knot cruise and top speed of 25 knots.

Key Features:

Caterpillar C32s Fully Serviced with Recently Replaced Aftercoolers  
Yacht Controller  
Side Power Bow and Stern Thrusters  
Twin Onan 27.5 kW Generators with  
NAIAD Stabilizers  
SeaRecovery Aquatic Water Maker  
Preferred 4 Stateroom/5 Head Layout (Full-Beam Staterooms) + Crew  
Custom Inflatable Toy Dock  
DeAngelo Exhaust Risers Replaced 2022  
Flybridge Air Conditioning Added 2022  
A-Sea Frequency Converter (Recently Serviced)  
Updated A/V and Bose SoundTouch System with 9 Zones  
Recent Work Completed 2025:

Services for Engines and Generators Complete (10/25)  
Updated Ceramic Coat and Varnish (10/25)  
Full Bottom Job Completed; Props Balanced (10/25)  
Prop Speed on All Running Gear (10/25)  
New Commercial Dryer  
Extended Flybridge Awning with Carbon Fiber Poles  
Membranes Replaced on Water Maker  
Updated Electric Heads in Guest and VIP Staterooms  
Garmin/VHF/Fusion Stereo Added to Tender  
Updated Control Box for IsoBoost Transformer  
PPF Film on Aft Deck Table, Salon, Dining, and Breakfast Tables  
New Steering Ram (\$20K)  
\$1.5M+ Refit (Fall 2024) at Safe Harbor LMC Including:

Full Paint Job: Rybovich Coatings Dept. Exterior Paint Superstructure/Hull with Awlcraft 3000 “Flag Blue” Hull and “Ostrea” White Superstructure with “Moon Dust” Non-Skid  
Full Ceramic Coating Completed  
New Teak Throughout: Teak Decking Systems Deck Replacement Using Vacuum Bag Adhesive Infusion  
New Garmin Electronics Package with Redundant Backbones and Sensors Including Sounders, Radios, AIS, Radar, SAT Compass, Cameras, Nav Radios, etc.  
Dual Starlink Marine Antenna System  
2023 Axis 4.2 Inflatable with 60hp Yamaha (Under Warranty) with New Cover, YRM Removable Chocks, and Custom Trailer  
Full Hardware Removal and Replacement with Fasteners Renewed on Entire Vessel



## Additional Services

Engine Services 2024: (\$85K+):

- Replaced Main Engine Aftercoolers
- Serviced Main Engine Heat Exchangers
- New Fluids/Filters on Mains
- Removed and Replaced Starboard Engine Rear Main Seal
- Removed and Serviced Gear Coolers
- Replaced Main Engine Impellers and Zincs
- New Fluids/Filters on Gears
- Replaced Starboard Coupling Isolation Cogs
- Removed and Cleaned Generator Heat Exchangers
- Replaced Generator Coolant And Zincs
- New Fluids and Filters on Gens

## Walkthrough

Transom/Swim Platform:

- Updated Automatic Humphree Interceptor Trim Tabs
- 4 SeaVision Underwater Lights
- Side Power Stern Thruster
- 8' Swim Platform
- Teak Decking with Grates
- Five (5) Stainless Steel Hoop Rails
- Flush Cleats
- Crew Quarters Entry at Transom
- Shore Power Cablemasters
- Passerelle Starboard Inside Steps
- 3-Step Entry with Hinged Door to Port and Starboard
- Courtesy Lights
- Custom Stainless "Overhead" Freshwater Shower
- Tender Tow Light

Aft Deck:

When you step aboard the large aft deck, you are greeted by an elegant outdoor living area. There is a large teak inlaid table with comfortable seating for 8 people.

Boarding Gates

- Updated Maxwell 3500 Windlass with Two Deck switches to Stern Anchor
- Teak Table with Two High/Low Pedestals
- Bench Seating Aft
- Custom Teak Chairs and Foot Rest
- Storage in Starboard Step-Up
- Aft Facing CCTV Camera
- 12" Ship's Bell
- Hard Top Overhead with Recessed Lighting and Updated JL Audio Speakers
- Molded Teak Staircase to Flybridge with Sliding Hatch
- Wing Station to Port:
- Engine Controls
- Side Power Thruster Controls
- Aft Deck Windlass Controls

Wet Bar to Starboard:

Forward and to Starboard is a bar area with three swing-out upholstered stools. Behind the bar is a new Isotherm refrigerator, grill, sink, and ice maker.

Three Swing-Out Stools

- Stainless Steel Sink with Hot and Cold Faucets
- Upper and Lower Molded Counters
- Miele Grill
- Storage
- Updated Isotherm Refrigerator

Salon:

Going forward through a water-tight door, you step up into the salon with a full unobstructed view forward to the dining area and the pilothouse beyond. The large windows (with wood blinds) provide excellent views in all directions. The salon has updated carpeting and Burmese teak-finished walls which offer a stunning appearance throughout the boat. There

are two large sofas to port and starboard separated by a large teak coffee table and flanked by two comfortable designer chairs aft.

Sofas (Port/Stbd)

Chairs (Port/Stbd)

Pop-Up 48" Flat Screen TV with Apple TV in Custom Teak Enclosure

Bose Lifestyle Stereo with Speakers and Subwoofer

Teak Table Centerline with Storage and Footrests

Built-in Teak Cabinetry (Port and Starboard) that Includes Shelved Storage, Glass and Stemware Storage, and U-Line Icemaker

Overhead Lighting with LED Rope Accents

3M "Sound Down" Decibel Reduction

Dining:

Forward of the Salon, separated by a built-in island cabinet that houses a 46" Sharp Aquos pop-up flat screen TV, is the dining area with a large table comfortably seating 8 people. There is extensive storage in this area for fine china, crystal, and everything needed for extended cruising. There is also a large wine storage cooler and U-Line fridge/icemaker.

Buffet to Port Includes: U-line Refrigerator with Icemaker and Wine Cooler

Bookshelves

Dining Table in Three (3) Sections with Eight (8) Chairs

Raised Soffit with Four Lights Over Dining Table and Over the Table in the Salon

Additional Buffet Storage Forward

Private Entry Door to Aft VIP Stateroom to Port

Private Full Beam VIP Stateroom:

Port of the dining table is the door leading down 8 steps to the private, full beam VIP stateroom.

Centerline Queen Berth with Port and Starboard Nightstands and Beveled Mirrors

Port and Starboard Hanging Lockers

Shoji Screens

Flat Screen TV with Apple TV and (2) Bose Speakers

Accent Lights at Berth Base

Large Storage Area Beneath Stairway

Custom Storage Cabinetry and Bookshelf

Central Vacuum Inlet

Port Lights with Covers and Drapery

VIP Heads (Port and Stbd):

Teak Wood Trim and Veneer Cabinetry

Teak and Holly Flooring

Mirrored Ceiling with Recessed Lighting

Vanities with Granite Counter and Backsplash,

Molded Fiberglass Shower with Overhead Light and Teak Deck Grate

Custom Teak/Acrylic Shower Enclosure Door

Towel Ring and Towel Bar

Vacuflush Marine Head

Galley:

From the dining area, moving forward and up three steps you enter the galley which is large, open, and well-equipped. Its

orientation lends to a social, owner-operator feel when preparing meals. To port are teak stairs leading up to the flybridge.

- Caesar Stone Countertops
- Under Cabinet Lighting
- General Electric Microwave Oven
- Miele Induction Range (4-Burner)
- Miele Oven
- Insinkerator Trash Compactor
- Sub-Zero 3-Drawer Freezer
- Sub-Zero 3-drawer Refrigerator
- Undermount Stainless Steel Sink
- General Electric Garbage Disposal
- Drinking Water Faucet at the Sink
- Fischer & Paykel Dishwasher Drawer
- Window Boxes with Wood Blinds
- Stainless Steel Cooktop
- Interior Stairs to Flybridge to Port

Pilothouse:

Forward of the galley is the lower helm and a comfortable seating area with hi-lo teak table to port. The helm is equipped with the latest Garmin marine electronics. Outboard are sliding doors to the side decks with screens.

Lower Console:

- Stidd Helm Chair
- Updated Garmin 9219s
- Airmar B275LHW Transducer for Fish Finder
- ICOM IC-M510 VHF
- 2X Garmin Tri-Data Display
- Ritchie Powerdamp Plus Compass
- FLIR Night Vision Controller
- Simrad AP70 Autopilot and Rudder Angle
- Windshield Wiper Controls
- Updated Humphrey Interceptor Trim Tab Controls
- Morse Main Engine Controls
- Side Power Bow and Stern Thruster Controls
- Nav Radios
- Overhead Controls:
- JL Audio Speakers
- Watermaker Control Panel
- Yacht Controller Docking System
- Fireboy Engine Shut Down System Monitor
- Battery Test Meter
- 12-Volt D.C. Gauge
- 12-Volt D.C. Accessory Switch Bank
- 24-Volt D.C. Accessory Switch Bank
- Tank Tender
- High Water Alarm Switch
- Ship's Systems Alarm Panel
- Naiad Stabilizer Control
- Inverter #1 & #2 Monitors
- Sump and Bilge Pump Switches

Overhead Hatches with Insect and Blackout Screens  
Five Overhead Recessed Lights and One Overhead Red Map Light

Forward Companionway:

Stairs from this area lead down to three of the staterooms including the master stateroom which is aft and full beam.

Updated Miele Washer and New Commercial Dryer  
26" TV with AppleTV  
Built-In Isotherm Freezer Chest  
Built-In Storage  
Two Torrid Water Heaters (One 20-Gallon, One 30-Gallon)  
Headhunter Aqua-Box Mini Multistage Pressure Pump  
UV Light for Drinking Water Pump  
Automatic Bilge Pump  
Two Water Pressure Tanks

Master Stateroom:

The master stateroom is large, full beam and stunningly finished with the finest owner-chosen fabrics and Shoji screen window treatments. There are his and her heads with a large shower between the two. There are four closets in the Master Stateroom and two additional closets in the heads. There is also drawer storage throughout and a large storage area under the king-size bed.

Watertight Entry Door  
King Island Berth with Framed Upholstered Headboard  
Nightstands with Three Drawers Each  
Hanging Lockers (4)  
Vanity Desk with Lighted Mirror under TV  
Settee with Assorted Pillows  
Bench Seating to Port with Storage Below  
Shoji Screens  
Updated LG Smart TV with Apple TV, Bose Sound Bar, and Overhead Speakers  
Master Head (Repeated Port and Stbd with Shower Between):

Mirrored Ceiling with Recessed Lighting  
Vanity with Granite Counter and Backsplash and Under-Mount Sink  
Soffit with Lighting and Hanging Locker, Storage Locker, and Port Light with Cover and Drapery  
Beveled Mirrored Aft Bulkhead  
Vacuflush Marine Heads  
Custom Shower Door  
Adjustable Handheld Showerhead  
Teak Deck Grate  
Teak and Holly Sole

Bow VIP Stateroom:

All the way down the companionway forward of the master in the bow is the second of two VIP Staterooms (the other VIP being midship and full beam with the private entrance from the salon).

Queen Berth with Additional Twin Berths Above  
Reading Lights  
Overhead Hatches  
Hanging Lockers with Lights

Updated LG Flatscreen TV with Bose Soundbar and Apple TV  
Beveled Mirror on Head Access Door  
Anchor Locker Access with Interior Light  
Bow Stateroom Head:

Vacuflush Marine Head  
Separate Shower with Custom Curved Glass Door, Teak Grate, and Adjustable Handheld Showerhead  
Medicine Cabinet with Teak Doors  
Mirrored Ceiling  
Portlight with Cover and Drapery  
Two (2) Overhead Lights

Port Guest Stateroom:

Twin Single Berths, Inboard and Outboard with Storage Below  
Nightstand with Three Drawers  
Two Reading Lights  
Two Overhead Bookshelves  
Two Port Lights with Covers and Drapery  
26" Sharp LED TV with Speakers and AppleTV  
Cedar-Lined Hanging Locker with Light  
Dressing Mirror  
Port Guest Stateroom Head:

Vacuflush Head  
Separate Shower with Teak Grate  
Sink and Storage  
Portlight

Open Flybridge:

There are two sets of stairs to the bridge, one to port of the galley and the other from the aft deck. Entering the bridge you step onto one of the real highlights of this 97 Marlow. Forward is the fully equipped helm which is flanked by two large seating areas each with beautiful large teak tables. Along with the single and double Bluewater Evolution helm chairs, this area will comfortably seat 10 to 12 people and can be opened or closed via a recently replaced ceramic-coated isinglass enclosure.

Moving aft you have a complete bar area to starboard with a professional stainless Miele electric grill and Sub Zero refrigeration. To port is a large double sun lounge. This entire area is covered with a custom Pipewelders aft shade (updated canvas). All exterior soft goods have been recently replaced and come with stamoid covers.

All the way aft is the large teak-decked bridge area that accommodates the 2023 Axis 4.2 Inflatable and a 2,200lb davit. This area is also set up to accommodate several tables and chairs for entertaining a larger party.

Upper Helm Console:  
Twin 18,000BTU Air Conditioning with Sound Deadening Enclosure  
Custom Matte Black Acrylic Inlay and Teak Border  
Bluewater Evolution Series helm Chair and Dual Bench Seating  
Garmin 9219 Series MFDs  
Simrad AP70 Autopilot  
Twin ICOM ICM510s VHF's  
Furuno Hailer with Mic, Loudspeaker, and Fog Signals

Furuno FA170 AIS  
Sirius XM Weather  
Humphrey Interceptor Trim Tab control  
Ritchie Powerdamp Plus Compass  
NAIAD Multi Sea II Control  
FLIR Night Vision Controls  
Morse Main Engine Controls  
Side Power Stern/Bow Thruster Control  
Nav Radios  
USB-C Chargers in FB Pocket Hatch  
Chart Table with Acrylic Top  
Flybridge Deck:  
Updated Teak Decking Throughout  
Updated Isinglass Enclosure (Ceramic Coated)  
L-Shaped Seating to Port and Stbd with Large Teak Tables and Custom Teak Chairs  
David Sutherland Teak Sun Loungers and Table  
LG Flat Screen TV and JL Audio Speakers and AppleTV  
2023 Axis 4.2 Inflatable with 60hp Yamaha with Cover, YRM Removable Chocks, and Custom Trailer (in Storage)  
2,200 lb Davit with 2 Wireless Controls and Emergency Wired Controls  
Stainless Steel Handrails  
Double Sun Lounge with Storage Underneath  
Updated Sub Zero Refrigerator  
Miele Electric Grill and Stainless Steel Sink  
Aft-Facing Camera  
Overhead Lighting  
Pipewelders Custom Aft Shade with Lighting (Updated Canvas)  
Custom Teak Step Ladder to Hard Top (Stbd Side)  
Teak Name Boards and Running Lights  
Hardtops:  
FLIR Thermal Camera  
(2) Garmin Open Array I 12Kw Radars (Phantom 56 and GMR 1236)  
ACR LED Spotlight  
Powdercoated Grab Rail  
(2) Switlik 6-Person Life Rafts with Stamoid Covers  
Triple Trumpet Air Horns (Lower Hard Top)  
Furuno SAT Compass (Lower Hard Top)  
VHF Antennas  
Mast:  
Side Decks:  
  
Varnished Cap Rails  
Stainless Steel Railing  
Teak Sole  
(4) Swing in Boarding Gates  
Wing Doors Aft  
Fuel/Water Fills  
(2) Removable Boarding Ladders: Marquipt (Low Tide) and NewWave (Hight Tide)

Exterior Day Head to Port:

Molded Fiberglass Compartment with Non-Skid Sole  
Molded Vanity with Teak Molding and Composite Countertop  
Recessed Stainless Steel Sink and Hot/Cold Faucets

Framed Beveled Mirror  
Overhead Light  
Marine Head  
Power Vent  
Towel ring

Bow:

Portuguese Bridge with Storage  
Foredeck Seating with Updated Upholstery and Stamoid Covers  
Fresh and Saltwater Washdowns  
One Manson 120lb Anchor with 100m of Chain  
Two Manson 80lb Anchors (One Aft)  
Two (2) Maxwell 4000lb Anchor Windlasses with Foot Switch Controls  
Two Stainless Steel Anchor Chain Stops  
GlennDinning Cablemaster  
(2) Safety Hatches from Bow Stateroom  
Teak Centerline and on Anchor Hatches  
Side Power Bow Thruster

Lazarette:

The water-tight entry door from the 8' swim platform leads down into the large lazarette with access to steering systems, tool boxes, and storage.

Overhead D.C. Lights  
SeaDek Sole Centerline  
Snap-On Tool Box with Tools Included  
Electric 2-HP Air Compressor with Storage Tank  
Central Vacuum  
Shore Cord on Electric Reel  
Pneumatic Transom Door and Controls with Override  
Hand-Operated Bilge Pump  
Hydraulic Steering Actuator  
Emergency Steering Handle  
Stern Thruster Compartment  
Furuno Autopilot Pump  
Electric/Automatic Bilge Pumps  
High Water Alarm Sensor

Crew Quarters:

Moving forward you step into the crew area with twin bunks to starboard and a single bunk to port. There is a dining table and settee in this area. The Crew has a separate head/shower forward to starboard. There is a microwave for the crew and a deep freezer under bunk.

Twin Bunks to Starboard and Single Bunk to Port  
General Electric Microwave Oven  
19" TV  
Overhead Stereo Speakers  
CO Detector  
Freezer Below Starboard Forward Berth  
Vanity Cabinet and Stainless Steel Sink with Hot/Cold Faucet  
Bookshelf Storage and Hanging Locker with Light

Teak Table with Stainless Steel Pedestal  
Dinette Seating  
Crew Head with Fiberglass Vanity with Caesar Stone Countertop and Undermount Sink  
Handheld Shower Head with Hot and Cold Faucet  
Vacuflush Marine Head

Engine Room:

Forward through a watertight door is the large, well-laid-out engine room with 6'6" of headroom and space to get to all necessary equipment including the two generators.

Twin Caterpillar C32 1800hp Engines (2,820hrs as of 3/25)  
Two (2) Onan 27.5 kW Generators (Port: 4,700; Starboard: 4,700)  
ElectroSea System with Dual Heavy Duty Stainless Steel Raw Water pumps  
Sea Recovery Aquatic Water Maker  
Recently Updated Wards Isoboost Transformer  
Reverso Oil Change Pump  
Glendinning Cablemaster  
Engine Room Blowers (2) Intake, (2) Exhaust  
A-Sea Frequency Converter (Recently Serviced)  
Sea Chests  
Willy Vac System  
Custom SeaDek Flooring  
Air-Conditioned Engine Room  
CCTV Camera Centerline  
Engine Room door with viewing port  
Mastervolt Charge Master 12/70-3 Battery Charger  
Mastervolt Charge Master 24/80-120 Battery Charger  
Two (2) Mastervolt Mass Combi 24/4000-120 Inverters  
Dometic Air Conditioning Chilled Water System: (3) 144,000 BTU A/C Units, Water Pressure Tank, Raw Water Pump and Chilled Water Pump  
Hydraulic Steering Reservoir  
Hydraulic Steering Cooling

Electrical Note: This vessel is 220V 50Hz with an A-Sea Frequency Converter and has been operating under current ownership in the US for over 10 years. Outlets are EU-style with US adapters.

Exclusions:

Owners Personal Belongings  
Artwork and Crystals  
Decorative Binoculars

**Disclaimer**

Denison Yacht Sales offers the details of this yacht in good faith but can't guarantee the accuracy of this information nor warrant the condition of this boat for sale. This yacht for sale is offered subject to prior sale, price change, or withdrawal from that yacht market without notice. She is offered as a convenience by this yacht broker to its clients and is not intended to convey direct representation of a specific yacht for sale.



2011 Marlow Explorer - Image 7



2011 Marlow Explorer - Image 8



2011 Marlow Explorer - Image 9



2011 Marlow Explorer - Image 10



2011 Marlow Explorer - Image 11



2011 Marlow Explorer - Image 12



2011 Marlow Explorer - Image 13



2011 Marlow Explorer - Image 14



2011 Marlow Explorer - Image 15



2011 Marlow Explorer - Image 16



2011 Marlow Explorer - Image 17



2011 Marlow Explorer - Image 18



2011 Marlow Explorer - Image 19



2011 Marlow Explorer - Image 20



2011 Marlow Explorer - Image 21



2011 Marlow Explorer - Image 23



2011 Marlow Explorer - Image 24



2011 Marlow Explorer - Image 27



2011 Marlow Explorer - Image 29



2011 Marlow Explorer - Image 30



2011 Marlow Explorer - Image 31



2011 Marlow Explorer - Image 32





2011 Marlow Explorer - Image 36



2011 Marlow Explorer - Image 38

2011 Marlow Explorer - Image 39



2011 Marlow Explorer - Image 40



2011 Marlow Explorer - Image 41



2011 Marlow Explorer - Image 42



2011 Marlow Explorer - Image 43



2011 Marlow Explorer - Image 44





2011 Marlow Explorer - Image 47



2011 Marlow Explorer - Image 48



2011 Marlow Explorer - Image 49



2011 Marlow Explorer - Image 50



2011 Marlow Explorer - Image 51

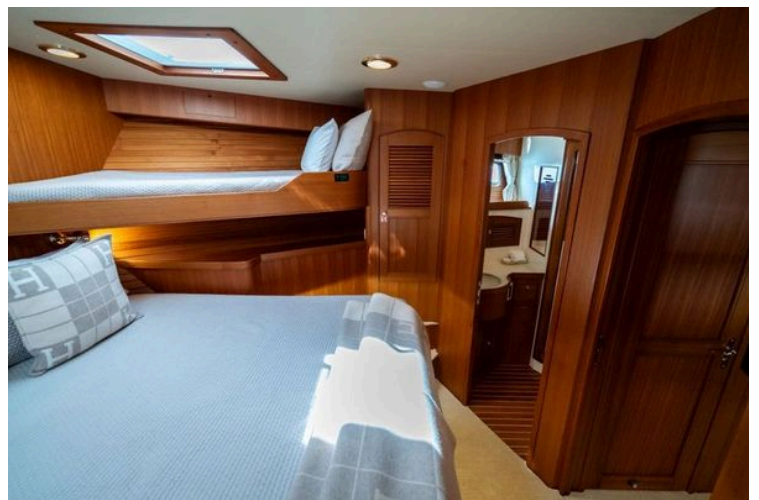




2011 Marlow Explorer - Image 56



2011 Marlow Explorer - Image 57



2011 Marlow Explorer - Image 58



2011 Marlow Explorer - Image 60



2011 Marlow Explorer - Image 61





2011 Marlow Explorer - Image 65



2011 Marlow Explorer - Image 66



2011 Marlow Explorer - Image 67



2011 Marlow Explorer - Image 68



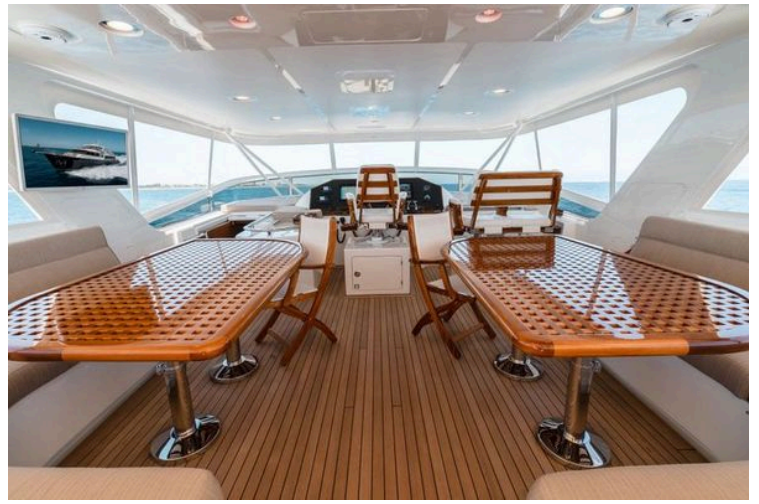
2011 Marlow Explorer - Image 69



2011 Marlow Explorer - Image 70



2011 Marlow Explorer - Image 71



2011 Marlow Explorer - Image 72



2011 Marlow Explorer - Image 74



2011 Marlow Explorer - Image 75



2011 Marlow Explorer - Image 76



2011 Marlow Explorer - Image 77



2011 Marlow Explorer - Image 79



2011 Marlow Explorer - Image 80



2011 Marlow Explorer - Image 81



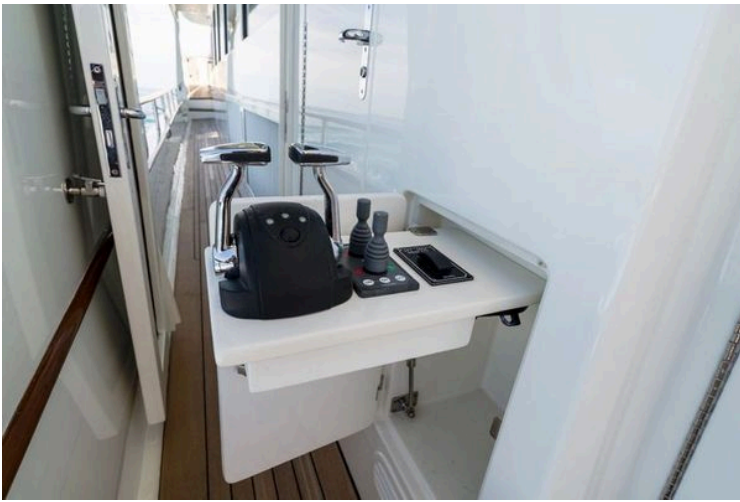
2011 Marlow Explorer - Image 82



2011 Marlow Explorer - Image 83



2011 Marlow Explorer - Image 84



2011 Marlow Explorer - Image 86





2011 Marlow Explorer - Image 92



2011 Marlow Explorer - Image 93



2011 Marlow Explorer - Image 94



2011 Marlow Explorer - Image 95



2011 Marlow Explorer - Image 96



2011 Marlow Explorer - Image 97



2011 Marlow Explorer - Image 98



2011 Marlow Explorer - Image 99





2011 Marlow Explorer - Image 104



2011 Marlow Explorer - Image 105



2011 Marlow Explorer - Image 106



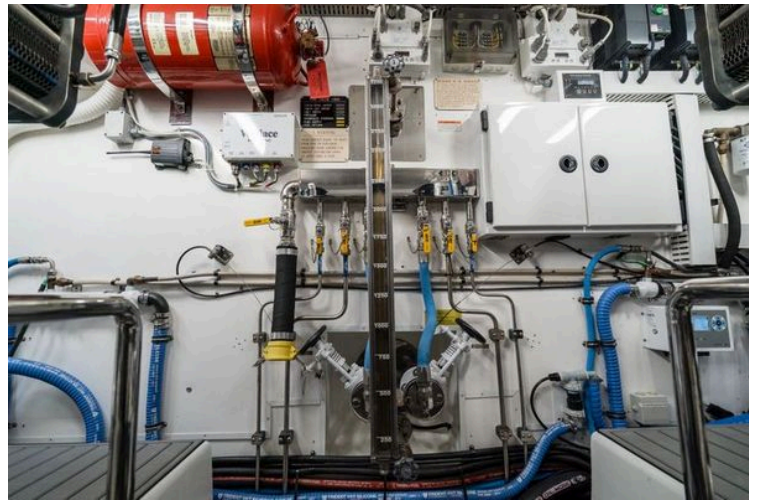
2011 Marlow Explorer - Image 107



2011 Marlow Explorer - Image 108



2011 Marlow Explorer - Image 109



2011 Marlow Explorer - Image 110