

70 ft 2008 Marlow Explorer 70E, MISS STEPHANIE

\$1,975,000

La Pointe, WI



Boat Details

Make:	Marlow	Class:	Motor Yacht	Guest Cabins:	3
Model:	Explorer 70E	Hull Material:	Composite	Guest Heads:	5
Year:	2008	Drive Type:	Direct Drive	Fuel Type:	Diesel
Length:	70 ft	Beam:	18 ft 4 in	Max Speed:	25 kn
Price:	\$1,975,000	Boat Location:	La Pointe, WI		
Condition:	Used	Name:	MISS STEPHANIE		

Marlow Sales Department | Marlow Marine Sales, Inc.

Marlow Marine Sales, Inc., Snead Island, Florida, United States

Tel: 941-729-3370 Fax: 941-729-4955

sales@marlowmarine.com

www.yachtworld.com/marlowmarine



Description

Miss Stephanie is without a doubt the finest example of a ready to cruise Marlow 70E anywhere in the world. This Marlow was originally built by an extremely knowledgeable yachtsman that outfitted her with the best equipment available. In order to fully appreciate this unique Marlow Explorer, you must schedule a time to come see her in person!

Information & Features

Caterpillar C-18 (Engine 1)

Engine Type:	Inboard	Drive Type:	Direct Drive
Fuel Type:	Diesel	Power:	1015 hp
Engine Hours:	2600		

Caterpillar C-18 (Engine 2)

Engine Type:	Inboard	Drive Type:	Direct Drive
Fuel Type:	Diesel	Power:	1015 hp
Engine Hours:	2600		

Dimensions

LOA:	74 ft 11 in	Max Bridge Clearance:	24 ft
LWL:	66 ft		
Beam:	18 ft 4 in		

Weights

Displacement:	82,000 lb
---------------	------------------

Speed

Cruising Speed:	18 kn
Max Speed:	25 kn

Tanks

Fuel:	1 x 1,900 gal
Fresh Water:	1 x 400 gal
Holding:	1 x 300 gal

Accommodations

Guest Cabins:	3
Guest Heads:	5

Other

Flag Of Registry:	United States
Builder:	Marlow

Salon

- 3 Stateroom, 4 head layout (5th head in custom crew quarters)
- Air conditioning and heat, ducted (chilled water A/C, zoned)
- Teak paneling and cabinetry
- Classic teak and holly soles throughout with custom carpet
- Soft vinyl headliners
- Schwepper interior hardware of the highest quality
- Satin varnish for interior finish
- Dovetailed Douglas Fir drawers
- Stainless Ball bearing drawer slides
- Gas cylinder lifts on berths
- Insulated ducting and hardwood diffusers for air conditioning
- All cabinetry fully lined
- Entertainment center - Bose Home Theater sound system
- Bose multi-zone, LS48, up to 5 zones
- Television Cabinet with new Intellian Apple-compatible HD flat screen
- Massive U-Shaped Ultraleather Sofa
- Solid hardwood valance
- Brass hardware
- Cabinets with tambour faces
- All cabinets lined with formica inside
- Lamp positive cabinet locks
- Décor fabrics, draperies, bedspreads
- English beveled mirrors
- Grohe top line faucets and fixtures
- Custom blinds in Salon
- Bookcase, storage unit aft of helm

Galley

- Teak and holly flooring with custom carpet
- Teak Panel and Cabinetry
- Granite Countertop
- Storage Cabinets & Drawers
- Franke double sink w/tap
- Rope light under counter
- Grohe faucet - Infinity Series
- Drinking water faucet
- Bread Crisper Box
- Spice racks
- Cutting Boards & Sink Covers
- Fisher and Paykel dishwasher - 2 drawer
- Disposal at sink
- Trash compactor - GE Monogram
- Exhaust Blower
- Dacor Electric Cooktop and oven
- Subzero double drawer refrigerator freezer
- Additional Subzero under counter refrigerator freezer facing forward
- U-Line wine cooler
- Subzero wine cooler
- Microwave/convection oven
- Overhead dish locker aft
- GFI (110V only) AC outlet
- 24V Lighting
- Night Switches for Toilets

Master Stateroom

The full beam master is huge with full 6'4" headroom, teak and holly sole highlighting the teak interior. She has an island king berth with drawer storage under the berth in addition to dressers port and starboard. There are portlights with Shoji screens, night lighting around the berth as well as behind the valances. The master stateroom offers a lady's vanity table with mirror and swing-out seat. The en-suite his and hers head is spacious with a large shower room in between two sink vanities with granite countertops and several drawers and lockers with shelves for storage of toiletries, linens, etc.

- Mirror
- Vanity
- His and Her Private heads w/stall shower in between
- CD/Stereo player
- Heavy duty 316L portlights w/ Soji screens
- New HD flat screen TV
- Custom upgraded carpet
- Cedar lined full height hanging lockers with auto lighting
- Tube light under bunk and behind valance
- 24V Italian and Danish lighting
- Linen closet
- Shoji screens
- Access to machinery storage areas

VIP Stateroom

- Queen sized island berth with upgraded fabric cover
- 24V Italian and Danish lighting
- Chest of drawers, under bunk
- VIP head and shower
- English Beveled Mirror
- Draperies
- Vanity
- Storage below sole
- CD/Stereo player
- Linen closet
- Heavy Duty 316L portlights with screens
- New flat screen TV
- Cedar lined full height hanging lockers with auto lighting
- Rope light under bunk and behind
- Vanity Valance
- Access to machinery storage areas

Midship Port Guest Stateroom

- Large over/under criss-cross twin berth stateroom
- Cedar lined hanging locker
- Teak and Holly sole
- Draperies
- iPad mounted on wall for TV/Entertainment
- Under deck storage
- Teak hull battens
- Heavy Duty 316L portlights and screens
- Upgraded Mattress Covers
- 24V Italian and Danish lighting
- Head & shower

Laundry

- Whirlpool stack unit - separate washer and dryer
- Teak Cabinetry, louvered Dutch doors
- Full Length Beveled Mirror
- Utility storage for supplies
- Landry Folding shelf
- Desk and Bookshelves

Heads

- Headhunter Heads (5)
- Showers (4)
- FRP interior w/varnished trim
- Granite counters
- China sink
- Grohe faucets for sink and shower
- Draperies
- English Beveled Mirror
- Teak framed Lexan doors for shower
- Mirrored Ceiling
- Louvered Cabinet Doors
- Vent blower
- S/S Square Porthole w/screen
- GFI (110V only) AC outlet
- 24V Lighting
- Night Switches for Lighting
- Towel Bars
- Soap Dishes

Crew Quarters and Lazarette

- Custom oversized bunk with storage underneath.
- Custom Headhunter head with dedicated 25 gallon holding tank
- Custom sink
- Custom storage with drawers
- Access Ladder
- Deck Prism Lights
- Varnished Teak Grating
- Weather Tight Access Hatch

Flybridge

- Flybridge with custom hardtop and complete four-sided enclosure
- Radar Mast
- Two Settees with Custom Teak Tables
- Custom Carpet
- (2) Stidd 500N Chairs
- 1,600 lb. Davit.
- Teak Decks
- F.R.P hinged radar arch
- Venturi windscreen with SS safety rail
- Molded FB seating with dry storage
- L-seat w/ cushion stbd with FRP table
- Copper screen laminated in PH overhead for single side band audio
- Red Night Lights
- Sliding hatch and door to bridge from pilothouse
- F.R.P integrated stairwell to flybridge

Pilothouse

- Stidd 500N helm chairs (2)
- Teak and holly flooring
- L-shaped dinette
- Dining table with teak top
- Steering control station with complete instrumentation
- Teak valance board w/tube light
- Lighted stairway to fore cabins
- Stereo-CD player
- 24V Italian and Danish lighting
- Chart locker
- Flush FRP articulating doors
- Teak electronics mounting panel
- S/S post see through stair to bridge
- Windshield defrosters

Control Systems

- New upgraded fly-by-wire Glendinning Control system at all three stations --- main helm, flybridge and aft deck. Electronic converter boxes by ZF on transmissions. All "bicycle cables" common to all other Marlow 70s of this vintage entirely removed. The upgraded system is redundant, and entirely cable-free, with redundant separate digital and analogue control systems so back up system can be used in case of a failure.
- Yacht Controller and joystick at main helm.

Electronics and Navigation

- 3 x Garmin GPSMAP 8622-22" Touch Screen GPS MFD Systems (2 at pilothouse helm, 1 at flybridge helm).
- Garmin GPSMAP 942 9" touchscreen GPS MFD system on flybridge.
- "Black Glass" mounting façade for lower station MFD installations.
- Garmin Fantom 56 Doppler Radar system w 6' Open Array Radar Antenna.
- Garmin GSD 24 Sonar Box and transducer adaptor kit.
- Garmin XM Satellite Weather system
- Garmin 800 Series AIS Transponder System
- Garmin GRID Joystick device.
- 2 x Garmin NMEA 2000 GPS WAAS antenna
- Black Polyplex mounting façade on Flybridge console
- Garmin NMEA 2000 Backbone and Ethernet network systems as required for proper Garmin Networking
- Interfaced Garmin navigation with existing SIMRAD automatic pilot system
- Elbex color ball camera with 4mm lens (4)
- Simrad AP 25 Autopilot (2 station)
- ICOM M-604 VHF radio with built-in remote mike kit (2)
- FLIR camera
- Starlink internet with external antennae

Entertainment and WiFi Systems

- Cellular Data and Wi-Fi Amplifier System with wireless router and access point as requested.
- High Definition Intellian S6HD Antenna System.
- All new HDMI Cabling, Wall mounting system modifications, Bose blue tooth system modifications.
- All new Intellian Flat Screen HD (Apple device/Netflix compatible) TVs throughout vessel including Salon and staterooms, with wall mounted iPad in bunk room.
- Aliv Bahamian booster

Electrical

- (2) Northern Lights 20 KW generator
- Heavy duty batteries, 4x200AH for engines, one for generator, 4 for service, total 9. All replaced 2022.
- Engine battery disconnect switch.
- Battery paralleling system with control switch
- Service battery switch
- 4000W Pure sine wave inverter
- Shore power inlets fore and aft, 2-50A 240V
- GFI outlets
- Tinned Wiring throughout
- Polarity reverse indicating light
- 24V lights in all compartments
- AC/DC distribution panel with magnetic circuit breakers
- VOLT and AMP meters
- Bonding system
- AC outlets throughout
- Glendinning Cablemasters (2)
- Italian and Danish lighting fixtures
- Backlighted electrical panel
- Hinged electrical panel doors
- International navigation lights
- Engine hours meter
- Intercom system, 3-stations 1-F/B, 1-E/R, 1-P/H
- Custom Tank level system all tankage
- Hanshin Searchlight, electronic controls
- Upgraded Naiad Model 252 stabilizers w/dual station controls
- Intercom System
- Power Hydraulic steering system
- Dual pump backup system
- 6" Ritchie Compasses (2)
- Engine alarm system, audio oil and temperature
- Kahlenberg air horns, dual trumpet controls
- Proprietary Vessel Safety System
- Aqua Signal navigational light system

Deck and Hull

- Upgraded hull and transom paint with upgraded main engine underwater exhaust
- Proprietary High-Pressure Lamination System, vacuum bagged
- Engineered Sandwich construction throughout
- Dupont Kevlar lamination fabrics
- Non-skid F.R.P. decks, main & F/B
- Epoxy Vinylester Hi temperature lamination
- Sandwich bulkhead, floors, stringer construction
- Burmese Teak weather decks
- Heavy duty concealed swim ladder
- F.R.P. bow pulpit with S/S anchor roller
- FRP swim platform with teak inlay
- Black antifouling paint, International over epoxy barrier coat (3)
- Heavy Duty 316L solid stainless rub rail
- Bulwark doors and gates P&S
- Painted Boot Stripe
- FRP cockpit storage lockers
- Molded FRP doors, Flush closing with dogs
- Owner aboard Marlow logo lighting
- Transom doors (2)
- Molded FRP flush window frames
- Laminated and tempered window glass with tint on non navigational exterior windows
- Screens on all opening windows, hatches, and ports
- Deck lights, 24V
- Heavy Duty low profile 316L SS Hatches (4)
- Sliding doors, P&S pilothouse, aft salon with lock
- Cockpit deck lockers, FRP
- Cockpit controls, sink and fire system
- Engine room access from cockpit locker
- Hatch (hinged) to lazarette
- Cockpit Seat
- Oval Stainless-steel handrails
- Teak coaming
- Portuguese Bridge deck storage lockers
- Hot and cold shower at transom
- Velocijet Strut Keels ©
- Barrett enclosure, 4-sided

Tender

NEW 16 ft Walker Bay tender with 60 hp Honda.

Exterior Hardware and Fittings

- Custom upgraded stainless handrails
- Hardware S/S or chromed brass
- 1.375" stanchions main deck
- S/S cleats & hawse holes
- Scuppers, cockpit
- S/S square portholes Heavy Duty 316L SS
- Fresh water washdown, cockpit
- Custom Stainless anchor light and pennant bracket
- Windlass, heavy duty dual gypsy chain
- Super Duty Custom trim tabs
- Sea water washdown, fwd deck, high volume
- Proprietary stanchion base mounting system
- Stereo-CD Player on Bridge
- 2 large fenders, 6 dock lines, 6 life jackets
- Heavy duty polished stainless anchors (2)
- Upgraded 400' Heavy duty chain
- S/S rudders
- Strut Keels
- Aquamet 22 propeller shafting
- Custom 5 blade CNC cut Nibral propellers, "S" class
- Bronze through hull fittings
- Zincs on rudders and shafts
- Teak or S/S steering wheel
- S/S stern staffs
- Exalto Heavy duty windshield wipers and washers
- Stidd helm chairs (2)
- Helm seat on flying bridge
- Hidden fueling ports with anti spill catch basin

Mechanical

- Bow thruster, Sidepower 20hp, 48v (control at each station)
- Stern thruster, Sidepower 20hp, 48v (control at each station)
- Glendinning cable master (2)
- Sea Recovery 900 GPD watermaker w/remote control at lower helm & UV treatment
- Flexible drive couplings and Thrust bearings
- Aquadrive-Centa or Python Flexible Drive couplings
- Proprietary Sea Chest water intake System
- S/S 110V pressure pump fresh water system
- PJR pressure sea water system
- Custom Clear Lexan sound shields on generators
- Dual water heaters, 50 gallons, stainless steel
- FRP fuel tanks with sight gauges
- Engine room blowers 220V High volume
- S/S water tanks w/sight gauges
- F.R.P. holding tank plumbed dockside or overboard discharge
- Common drainage system for sink, deck, shower, and bilge
- Color coded copper piping for fuel, water, and hydraulic system
- Four 3700 GPH bilge pumps with auto & manual switch
- Heavy Duty manual bilge pump
- High water bilge alarm in engine room
- Shower pumps
- FRP gray and black water tanks
- Smooth finish Gel coated bilges
- Heavy Duty Exhaust Hose clamps
- Common drainage system for all discharges
- Polished Stainless Engine Beds, Risers and Fuel Manifolds
- Engine Lube Oil Tank, 25 gallons
- Engine-Generator-Gears Oil Change system
- Hydraulic redundancy for stabilizers and power steering
- Upgraded Headhunter fresh water and toilet system (5 heads)
- Backup freshwater system 9 110 vac
- Fitted workshop, fully finished with workbench, storage, sink, vise, tool storage, refrigerator. Entry through aft deck seat.
- Soft engine mounts
- Drive coupling covers, FRP
- Sea Chest inspection and cleanout port
- Seacocks on all seawater supply lines
- PJR drinking water pump

- Proprietary Fiberglass insulation blanket
- Engine room lead/foam sound insulation
- Racor fuel water separators, dual with gauge
- Engine room vent blowers 2x12V24v
- Engine isolation switches
- Varnished Teak bilge grating
- 240V fluorescent lighting
- DC outlet
- AC outlet
- Fresh water outlet with hose for engines & generator
- Under water exhaust system
- 24V overhead lights, waterproof
- Dripless engine shaft seal logs
- Heavy Duty vacuum pumps for gray and black water
- HD watertight engine room door with inspection port
- High Temperature silicone exhaust hoses
- Proprietary Air inlet system, baffled
- 304 Stainless domestic Water Tanks
- Newmar 12 volt 40A. Battery charger
- Newmar 24 volt 70A. Battery charger
- Extensive spare parts inventory to convey with vessel.

2020-2023 Updates

2020 UPDATES:

- Vessel hauled, bottom completely cleaned and painted, propellers removed and polished, shaft and lower stabilizer fin seals replaced, stabilizer system serviced, tender outboard motor serviced, tender re-wired with all deficiencies corrected, rudder hydraulic oil coolers replaced, main engine impellers replaced, coolant removed, refilled and serviced with CAT OEM parts.
- Custom Nibral 5-blade propellers installed

2021 UPDATES:

- FLIR installed
- New DeAngelo Marine Exhaust to include mixing tanks and high temp blankets.
- New Wine fridge

2022 UPDATES

- All new AGM batteries installed
- Davit overhauled

2023 UPDATES

- Starlink installed
- New Microwave
- Fresh bottom paint job done annually, last done in 2023

Exclusions

Owner's personal items.

DISCLAIMER

The Company offers the details of this vessel in good faith but cannot guarantee or warrant the accuracy of this information nor warrant the condition of the vessel. A buyer should instruct his agents, or his surveyors, to investigate such details as the buyer desires validated. This vessel is offered subject to prior sale, price change, or withdrawal without notice.



Aft Deck Seating/Dining



Salon facing Forward



Salon facing Forward Starboard



Salon facing Aft Starboard



Salon facing Aft



Pilothouse facing Forward



Galley facing Starboard



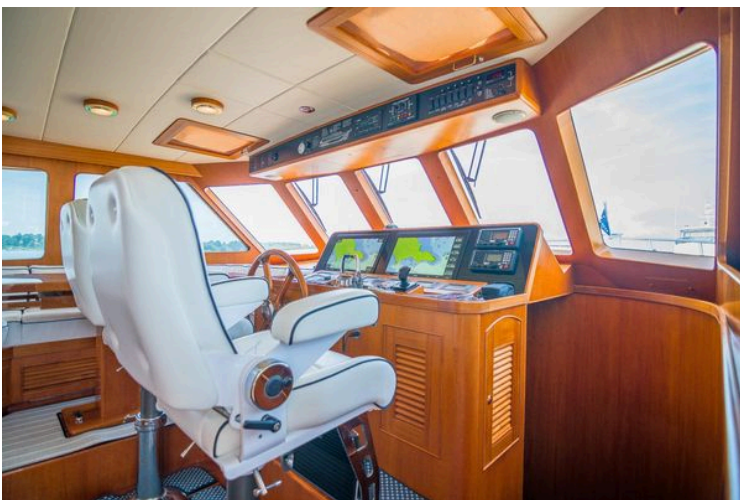
Galley facing Forward



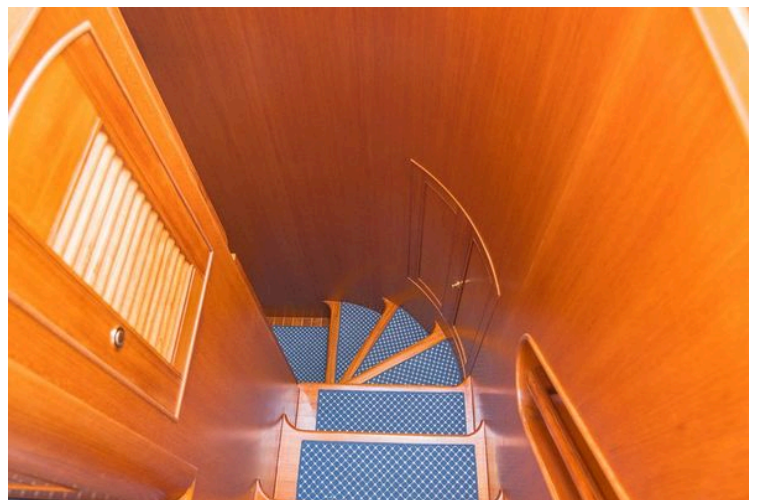
Pilothouse Helm facing Forward



Helm



Helm facing Port



Companionway Stairs



Companionway facing Aft



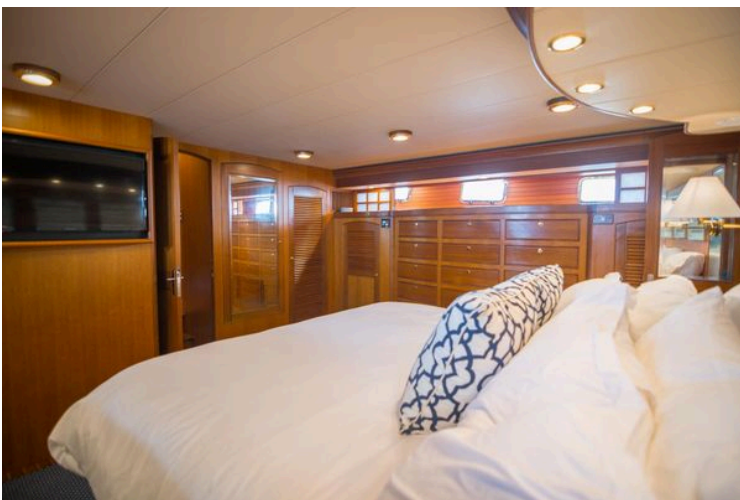
MSR facing Forward



MSR facing Starboard Aft



MSR facing Starboard



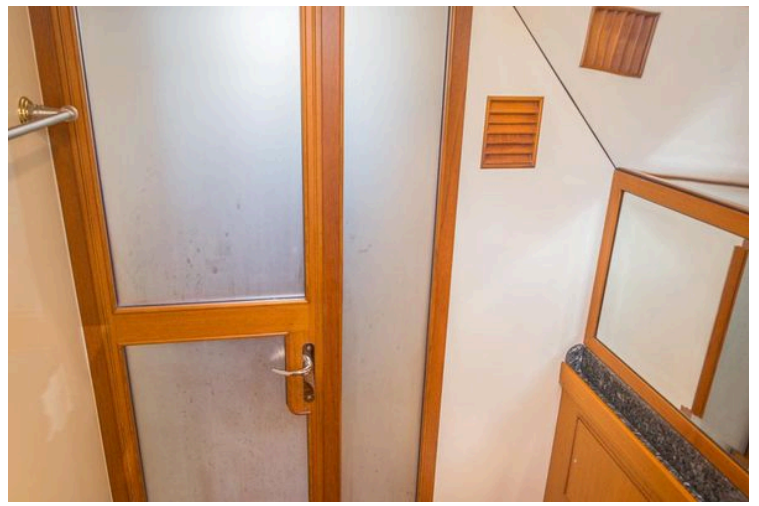
MSR facing Forward Starboard



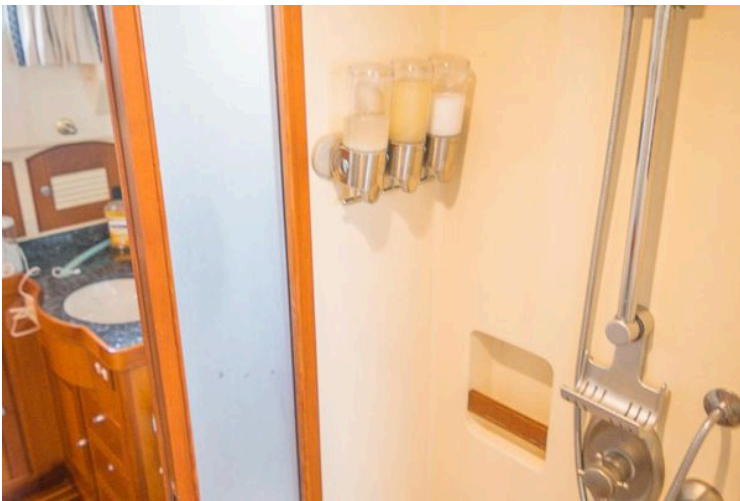
MSR Portside Head



Portside head sink



MSR Portside Head and Shower Door



MSR Shower



MSR Starboard Head



MSR facing Port Aft



MSR facing Forward Portside



MSR Drawers and Cedar Lined Hanging Lockers



Companionway facing Forward



VIP facing Forward



VIP facing Aft



VIP Head



Companionway facing Aft



Portside Guest Stateroom



Portside Guest Stateroom



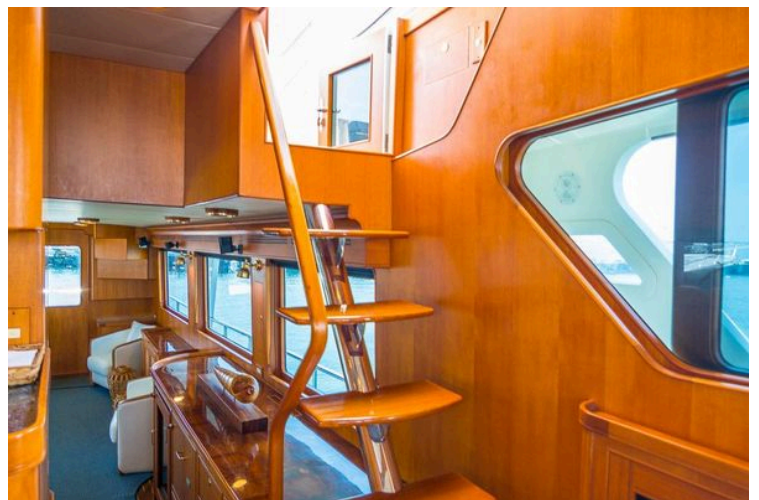
Portside Guest Head



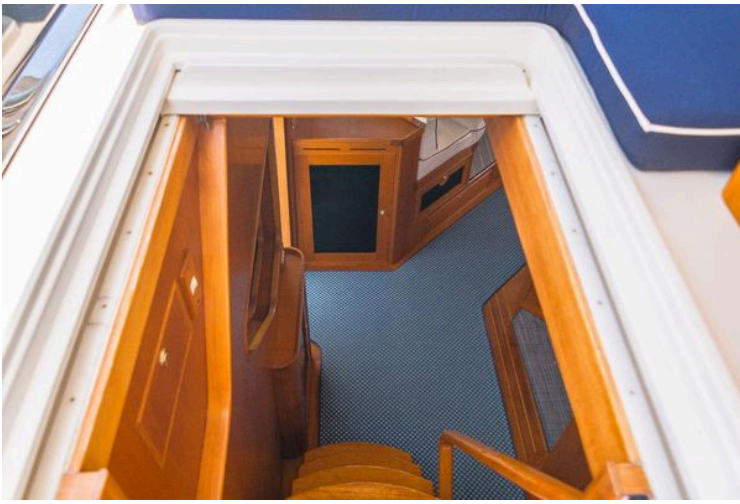
Full Size Stackable Washer/Dryer in closet



Pilothouse facing Aft



Stairs to Flybridge



Flybridge stairs to Pilothouse



Flybridge Helm



Flybridge facing Forward



Upper Deck Aft Seating



Upper Deck facing Forward



Upper Deck facing Forward Port



Stairs down to Aft Deck



Hatch to Crew Quarters/Engine Room



Crew Quarters



Crew Quarters facing Forward



Engine Room facing Forward



Aft Deck Stairs to Upper Deck



Portside Portuguese Bridge facing Forward



Bow facing Forward



Bow facing Aft



Marquipt Boarding Ladder for Bow



Portside Profile



Starboard Profile



Bow Portside Profile



Starboard Profile



Bow Starboard Profile