

75 ft 2018 Marlow Explorer 75E-CB, TURANGALILA

\$4,795,000

Miami Beach, FL



Boat Details

Make:	Marlow	Class:	Motor Yacht	Guest Cabins:	4
Model:	Explorer 75E-CB	Hull Material:	Composite	Crew Cabins:	1
Year:	2018	Drive Type:	Direct Drive	Guest Heads:	4
Price:	\$4,795,000	Beam:	20 ft 6 in	Crew Heads:	1
Condition:	Used	Name:	TURANGALILA	Fuel Type:	Diesel



Marlow Sales Department | Marlow Marine Sales, Inc.

Marlow Marine Sales, Inc., Snead Island, Florida, United States

Tel: +1 (941) 729-3370 Fax: 941-729-4955

sales@marlowmarine.com

Description

The first Marlow 75 to be built and the first to be available on the brokerage market. Very well maintained by a knowledgeable yachtsman with a full-time captain. She is one the most beautiful, high performance motor yachts in her class - a stunning example of timeless craftsmanship, cutting-edge engineering, and luxurious design. This beautifully maintained yacht combines the elegance and performance Marlow is known for, with the added versatility of a fully enclosed Command Bridge. With her spacious layout, exceptional attention to detail, and powerful yet efficient performance with C-32 1800hp engines, she offers the perfect platform for extended cruising or elegant coastal adventures. Equipped with a wireless yacht controller, she can easily be handled by only 2 people.

Her Hull is Flag Blue Awlcraft 2000 and the Superstructure has been painted as well in brilliant Chevy White (whiter white).

Information & Features

2018 Caterpillar C-32 Acert (Engine 1)

Engine Type:	Inboard	Drive Type:	Direct Drive	Propeller Material:	Alloy
Fuel Type:	Diesel	Power:	1800 hp		
Engine Hours:	1300	Propeller Type:	5 Blade		

2018 Caterpillar C-32 Acert (Engine 2)

Engine Type:	Inboard	Drive Type:	Direct Drive	Propeller Material:	Alloy
Fuel Type:	Diesel	Power:	1800 hp		
Engine Hours:	1300	Propeller Type:	5 Blade		

Dimensions

LOA:	85 ft 7 in	Max Draft:	5 ft
LWL:	74 ft		
Beam:	20 ft 6 in		

Weights

Displacement:	118,000 lb
---------------	-------------------

Speed

Cruising Speed:	24 kn
Max Speed:	30 kn

Tanks

Fuel:	1 x 3,420 gal
Fresh Water:	1 x 400 gal
Holding:	1 x 200 gal

Overview

The moment you step aboard any Marlow Explorer, you're greeted by timeless elegance and impeccable craftsmanship. The low-profile, high-bow design reflects a true seaworthy heritage, while her sleek lines and flawless joinery exude quality throughout. "Turangalila" embodies all of this and more, she is truly one of a kind. From the carefully selected and perfectly placed equipment to her robust construction, every detail speaks to a vessel built without compromise.

The functional layout is complemented by a warm and spacious interior filled with extensive equipment, thoughtful options, and premium upgrades. Every interior space is trimmed in rich teak with teak and holly floors. A satin-finish, two-part varnish seals the wood, making upkeep as easy as light dusting. The chilled water air-conditioning system with reverse cycle heat ensures quiet, comfortable living in any climate. Seating areas are upholstered in Ultraleather over layers of variable-density foam for supreme comfort.

Boarding is easy and flexible: enter from the stern via the port side stairway connected to the large swim platform or via the Marquip stairs at one of the 4 boarding locations on the side deck. The swim platform itself is expansive, ideal for water activities or relaxed lounging. A large, hydraulically assisted transom door provides access to the lazarette, crew quarters, and engine room.

The cockpit layout has been designed to provide a very large seating area that can easily seat 8-plus for dinner. This area is built for entertaining, with a high-gloss dining table, comfortable cockpit seating, and room for additional chairs to accommodate up to ten guests. Just to port of the salon doors, a built-in stairwell leads to the flybridge. Wide side decks with Portuguese bridge access provide safe and easy movement forward, and optional forward boarding gates add even more versatility when docking at varying heights. Access to the salon is seamless, with two large doors - one hinged, one sliding - that together open nearly five feet wide, creating a grand entrance and easy indoor-outdoor flow. In the forward area of the cockpit under a fiberglass lid you find an aft control station, sink, and electric grill.

Salon / Bar

Upon entering from the aft deck, you're greeted by an expansive, open-plan salon with unobstructed sightlines extending all the way to the forward windshield, enhancing the sense of spaciousness. Large windows on both sides flood the area with natural light, creating a bright and airy ambiance. The floors are a beautiful teak and holly. On the port side across from the bar is a Miele coffee machine, 15" wine cooler and sub-zero beverage center. The forward bar area has generous storage for glassware behind glass doors. All glassware has been fitted in clear Lexan shelving for secure storage at sea. This makes for a beautiful presentation. The wall sconces and custom window treatments give you a more modern feel than more traditionally equipped yachts. The ceiling headliners have been built in a whiter white in keeping with the brighter painted superstructure.

- Very large built-in settees port and starboard, with built in storage below.
- Large high-gloss coffee table with custom built ottomans below.
- Large flat screen TV in starboard aft corner for viewing from port and starboard settees.
- Small desk built into corner cabinet under TV.
- Bar forward with 4 teak and Ultraleather stools.
- Bar has a separate TV forward.
- Bar has a sink, dedicated ice maker.
- Miele oven in the bar, perfect for hors d'oeuvres when entertaining.

Galley / Pilothouse

Walking up three steps brings you to the spacious, modified, u-shaped galley, featuring numerous upgrades including Dupont Zodiaq countertops, a stainless-steel Franke sink with a cutting board cover, Grohe faucets, and a garbage disposal. The galley is equipped with a full suite of appliances: a stovetop, electric range with full size oven, oversize convection microwave, and full height subzero refrigerator in the galley and two sub-zero freezer drawers forward. Ample cabinetry and drawer space ensure that everything you need is within reach. This open, well-appointed galley is perfect for entertaining, and gourmet chefs will thrive in its functional and elegant design. Located forward of the galley, the dining area is designed to seat 6-8 comfortably around a large U-shaped dinette. Surrounding the dining space are expansive windows constructed from laminated double-layer tempered glass, offering superior hurricane and weather resistance while enhancing physical security and maintaining watertight integrity. The 360-degree views from this elevated position are simply stunning.

On the port side by the table is large storage cabinet with a granite top. This is a perfect serving area with close proximity to the pilothouse table. Additional storage can be found directly across the pilothouse outboard of the stairs.

- Full size Bosch oven.
- Miele Induction cooktop.
- Extra-large whirlpool convection oven.
- Twin Fisher Paykel drawer dishwashers.
- Separate filtered water at sink.
- TV folds down from ceiling to be seen from the galley and seating area.

Command Bridge

The fully enclosed Command Bridge has the same interior finishes as the rest of the yacht with Teak and Holly floors, and satin teak cabinetry and walls. The area can be opened well-ventilated on nice days by opening the port and starboard command bridge doors, aft door and large overhead hatches. The helm area is beautifully done with all the yachts systems at your fingertips. The captains Stidd Helm chair is accompanied by a double chair to starboard. The captain has access to all the systems on the overhead display panel. This provides the ability to quickly see all warnings, tank levels, voltage levels. To starboard there is an electrical sub panel that provides access to the main breakers that are related to the operation of the yacht. The main display screens are 3 22" Garmin Multifunction displays. The CAT engines have their own displays.

Behind the helm chairs is a seating area and office. The seating area is elevated to provide an excellent view out the windows and has a beautiful teak table. You will find the mini office in the starboard corner. This is very well thought out, with a desk, chair, file drawer and printer. The current owner has loved this space during his ownership. Across from the seating area and office is a day head and drink refrigerator.

- Large helm with three 22" multi-function displays.
- Single Stidd helm chair for the captain and a double for the passengers.
- Settee with table aft, a desk and chair and a storage cabinet with the printer on top.
- Command bridge has a spacious day head with sink and toilet to port aft.
- Uline refrigerator with ice maker to port.
- Two easy access points from galley stairs, or aft cockpit stairs.
- Sliding doors on port and starboard provide access to side decks and allow for cross ventilation and fresh air.
- Overhead dual opening hatches with screen for added air flow on nice days.
- Marlow proprietary safety and control panel conveniently located above helm station.
- Tank and voltage monitoring for all tanks and battery banks.
- Separate electrical panel for 12 and 24V helm related components.
- Yacht controller for ease of docking.

Upper Aft Deck

Aft of the Command Bridge, the spacious Upper Aft Deck features an extended hardtop, L-shaped settee/lounge with table. To port the bar features sink, refrigerator with icemaker, 3 bar stools, and storage lockers. A sliding hatch protects the stairs to the lower aft deck. Aft is the hydraulic 1600-lb davit. Stainless steel rails extend to the boat deck's edge, with removable N-rails around the dinghy launch area.

- Extended Hard Top.
- L-Shaped Settee/lounge with built-in storage.
- Bar with sink.
- Refrigerator with ice maker.
- Storage lockers.
- Stainless-steel removable N-rails near dinghy launch side.

Master Stateroom

The full-beam master stateroom provides a spacious and private retreat, complete with a king-size berth positioned centerline. The head is aft and entered on the starboard side and has a large countertop and twin sinks. The shower is very large. On the port side you find the entrance to the walk-in closet. Hanging lockers on both port and starboard sides, along with abundant drawer storage that offers excellent organization. Large portlights on either side bring in natural light and ocean views, enhancing the open and airy feel of the space. Luxurious touches include rich wood accents, custom furnishings, a built-in settee, and premium fixtures. The ensuite head features a large shower, granite countertops, Grohe fixtures, and an electric push-button toilet.

- Centerline king master with custom headboard.
- 5 Storage drawers under the bed.
- Settee and twin storage lockers to port.
- Vanity with built in stool on the forward port side.
- Port side aft is a walk-in closet.
- To starboard is a full chest of drawers and twin storage lockers.
- Tall hanging locker to starboard on forward wall.

VIP Stateroom

Located in the bow, the VIP stateroom offers a centerline king berth surrounded by finely crafted woodwork and cabinetry. This space is bright and inviting thanks to two large overhead hatches. The ensuite head includes a spacious shower with a teak floor, Compac Ceniza countertops and Grohe fixtures.

- Centerline king with great access for either side.
- Large cedar lined hanging lockers port and starboard.
- 4 large storage drawers under the berth.
- Access to VIP head from the stateroom.
- Head has a large opening port light, nice sink and countertop with storage. Large stall shower and toilet.

Port Guest Stateroom

The port guest stateroom has been updated to a single large berth, perfect for adult couples, with built-in storage below and hanging lockers above. A convenient ensuite head offers a generous shower, Compac Ceniza countertop, Grohe fixtures, a large mirror, and an electric push-button toilet.

- This stateroom has its own private head with separate stall shower.
- There is great storage for guest with storage under the bed and a full-height cedar lined hanging locker forward.
- There are 2 large opening portlights.

Starboard Guest Stateroom

The starboard guest stateroom was modified to be a laundry center and storage. There is still a good size berth above the washer and dryer for those times when you need the additional room.

- The 4th stateroom built as the laundry center and for storage.
- There is a mattress above the washer and dryer providing one more berth when needed.
- This room has a hanging locker and TV.
- The washer and dryer are GE home front loading, and the dryer is vented outside.
- There are 2 opening portlights in this space.

Crew Quarters

Crew accommodations are located aft with a private entrance from the cockpit. There is a large double bed to port and a single to starboard. There is a nice seating area with table and a full head. The design mirrors the same quality found throughout the yacht, with wood accents, granite surfaces, and Grohe fixtures. A lounge area and dinette enhance the comfort of the crew, ensuring they feel at home. With thoughtful design and high-end finishes, the crew quarters contribute to a happy and efficient onboard experience.

- Full double bed to port and single to starboard.
- Bench seat with table near centerline and forward there is a storage cabinet with sink and refrigerator.
- Head toilet and sink are on centerline.
- Aft of the head is the lazarette that offers storage and has a transom door or for access to the swim platform.
- Crew microwave.
- Crew refrigerator.
- Crew sink (not in head).

Hull/Deck

"Turangalila" is constructed using state-of-the-art materials and modern techniques that emphasize strength, lightweight performance, and resistance to punctures. The hull design prioritizes safety, efficiency, and fuel economy at all speeds. Marlow uses its proprietary dry stack Resin Infusion Vacuum Assisted Transfer (RIVAT) process, which minimizes unnecessary bulk and enhances structural integrity and handling. The Corecell foam adds strength, durability, and water resistance.

The underbody includes twin Velocijet strut keels and propeller tunnels, which align thrust more efficiently with the hull for improved performance and protection. These structures enhance propeller safety and performance, especially in shallow waters or low-speed groundings.

Decks are finished with custom non-skid surfaces and broad waterways for effective water runoff. Teak decking is used throughout key areas, including the foredeck, aft deck, and side decks. Anchor systems include a yacht-controlled windlass and both Danforth and stainless-steel plow anchors, with heavy-duty hatches and stainless-steel railings for safety and ease of use.

A notable feature includes large seating designed for comfort and practicality, including integrated storage for fenders and lines. Tank fills are accessible from both sides, and the yacht includes a sliding watertight tempered glass door for entry.

- Twin vertical anchor windlasses.
- 2 x Anchors Plow and Bruce.
- Chain anchor rode.
- Large foredeck cleats and hawse pipes.
- Retractable heavy duty stainless steel and teak swim ladder.
- Underwater lighting.
- Day head in the Command bridge.

Engine Mechanical

The engine room aboard “Turangalila” is spacious and thoughtfully designed for easy access to all systems and equipment. Fuel tanks are positioned forward for optimal weight balance and maintenance access. The Twin 32kw generators, are each housed in its own sound-shield. Dual sea chests—cross-plumbed for redundancy—improve cooling efficiency and system safety, offering easier service access than conventional setups.

Powered by twin Caterpillar C32 ACERT engines (1800 HP each, 1300 hours), she can reach top speeds exceeding 29 knots. The engines are mounted on soft supports and sit on stainless-steel beds over carbon fiber stringers, minimizing vibration and enhancing performance. A carbon fiber thrust plate absorbs and transfers thrust smoothly to the hull.

Full Hydraulic Package has a pump mounted on the power takeoff of each transmission and a large oil supply tank is mounted on the aft engine room wall. This system serves the stabilizers, bow thruster, and stern thruster.

- Twin Caterpillar C32 ACERT 1800HP engines (1300 hours each).
- Two 29 KW Onan generators in custom sound shields.
- Naiad Fin Stabilizers.
- Yacht Controller.
- 2x 3500-watt inverter and chargers.
- 24-volt 60 Amp Charger.
- 12-volt 40 Amp Charger.
- Two ISO Transformers.
- Upgraded 30HP Hydraulic bow and stern thrusters.
- One Forward 100 Amp, and one 50A Shore Power inlet.
- One Aft 100 Amp, and one AFT 50 Amp Shore power cords on Glendenning Cable Masters.
- Backlighted electrical panels.
- Carbon Monoxide detectors in all berthing spaces.
- Soft Motor Mounts.
- Two Cross-Connected Sea Chest Water Intakes with cleanouts.
- Drypoint Demister Air Intake System.
- FRP Fuel Tank (3420 gallons) with sump and cleanout.
- Fuel Manifold and Proprietary Sight Gauge.
- Dual Racor Fuel Filters with Pressure Gauges for each Engine and Generator.
- Fire Suppressant System.
- Engine Room Lead/Foam Sound and Heat Insulation System.
- Heavy Duty (3700 GPH) Bilge Pump and High-Water Alarm.
- 4 High Volume Engine Room Blowers.
- Color Coded Piping.
- Polished Stainless-Steel Engine beds with Carbon Fiber Stringers.
- Gel-Coated Bilges.
- Oil Change System.
- LED Engine Room Lighting.
- Common Drainage System from bow to stern collects deck drain, scupper, and sump discharges.
- Underwater Exhaust.
- Gray Water (200 Gallon) and Black Water (200 Gallon) holding tanks with dockside and at sea discharge controls.
- Fresh Water (400 Gallon) Tank.

Navigation and Entertainment Electronics

- 3.GARMIN: GPSMAP 8622 22" HD TOUCHSCREEN MFD W/ GPS ANT
- STARLINK Internet
- CAT Engine Data interface to Garmin chart plotters
- GARMIN: GSD-24 DIGITAL BLACK BOX SOUNDER
- AIRMAR: B260 1KW TH BRONZE 010-10640-20
- GARMIN: GMR1226XHD2-6 12KW OPEN ARRAY RADAR WITH 6' ANTENNA
- Second Radar GARMIN: FANTOM 6 40 W SOILD STATE GMR RADAR WITH 6' ANTENNA K10-00012-14
- Autopilot GARMIN: GHP REACTOR HYDRAULIC COREPACK WITH SMARTPUMP
- 2 VHF ICOM: IC-M506 VHF RADIO REAR MIC WITH NMEA 2000
- AIS GARMIN: AIS-600
- Sat Weather GARMIN: GXM52 XM SATELLITE WX ANTENNA
- Sat TV KVH: TRACVISION HD7 US SAT TV SYSTEM
- WI FI AIGEAN AN-7000 Long Rang Marine Wi-Fi 2.4GHz & 5GHz
- Cell CRADLEPOINT CELLULAR DEVICE
- CB Audio SONOS CONNECT AMP
- Salon AV SONOS PLAYBAR and Surround Sound
- SONOS for Master
- VIP and Port Guest Fusion Radios
- Cameras: 3-ENGINE ROOM, 1-AFT DECK, 1-SALON LOOKING AFT, 1-GALLEY LOOKING AFT, 1-LAZARETTE LOOKING AFT AND 1-FB HARDTOP LOOKING AFT

Disclaimer

The Company offers the details of this vessel in good faith but cannot guarantee or warrant the accuracy of this information nor warrant the condition of the vessel. A buyer should instruct his agents, or his surveyors, to investigate such details as the buyer desires validated. This vessel is offered subject to prior sale, price change, or withdrawal without notice.



Cockpit Table and Stairs up to the Boat Deck



Cockpit Controls, Sink and Electric Grill



Salon Looking Foward



Salon Port Aft Corner



Salon Starboard Side Settee



Salon Bar Looking Foward



Salon Bar Looking Starboard



Salon Bar Looking Port, Wine Cooler, Coffee Machine



Galley Looking Aft, Induction Cooktop, Large Sink, Convection Microwave



Galley Sink Looking Forward



Full Size oven and large Convection Microwave



Galley Looking Aft, Full Size Sub Zero



Luxurious interior of 2018 Marlow 75E-CB yacht with modern kitchen and seating area.



Pilothouse Seating



King Master Bed Looking Aft



Luxurious 2018 Marlow 75E-CB yacht bedroom with elegant wood paneling and plush bedding.



Master Looking Forward



Master Shower



Master Head Twin Sinks



VIP King Berth



VIP Head



Port Guest Double



Port Guest Head and Shower



Helm



Luxurious Marlow 75E-CB 2018 yacht helm with advanced navigation systems and plush seating.



Luxurious 2018 Marlow 75E-CB yacht interior with helm, seating, and navigation equipment.



Command Bridge Day Head



Upper Boat Deck Bar and Seating



Outdoor Bar



Starboard Laundry Center and Bunk



Crew Cabin



Crew Cabin and Engine Room Door



Engine Room Looking Forward



Engine Room Starboard Engine



Forward Engine Room Wall, Fuel Manifold



Port Engine Shaft System



Engine room of 2018 Marlow 75E-CB yacht, featuring advanced machinery and equipment.



Engine room of 2018 Marlow 75E-CB with Cummins Onan generator.



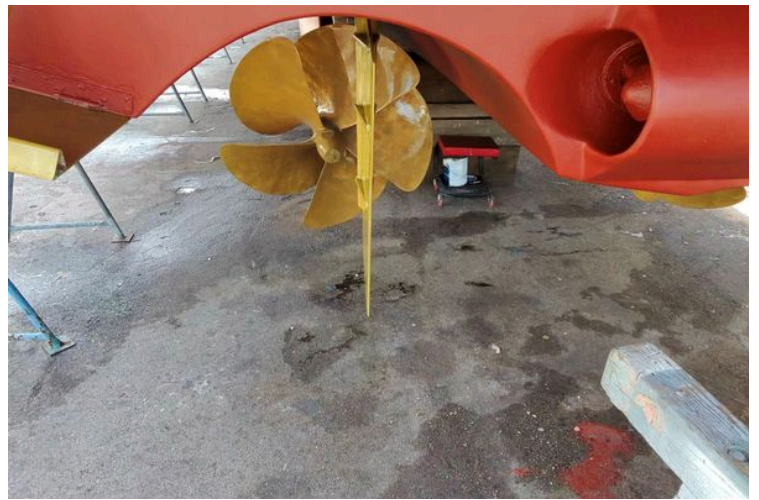
Engine room of 2018 Marlow 75E-CB yacht, showcasing complex machinery and piping.



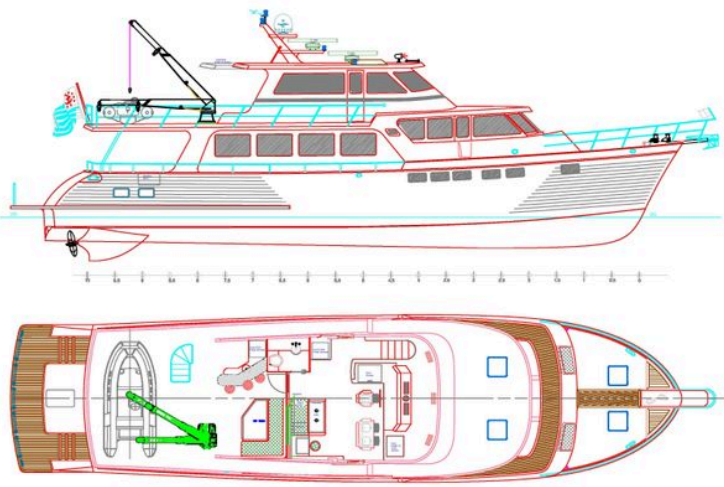
Engine room of 2018 Marlow 75E-CB yacht, showcasing complex machinery and piping systems.



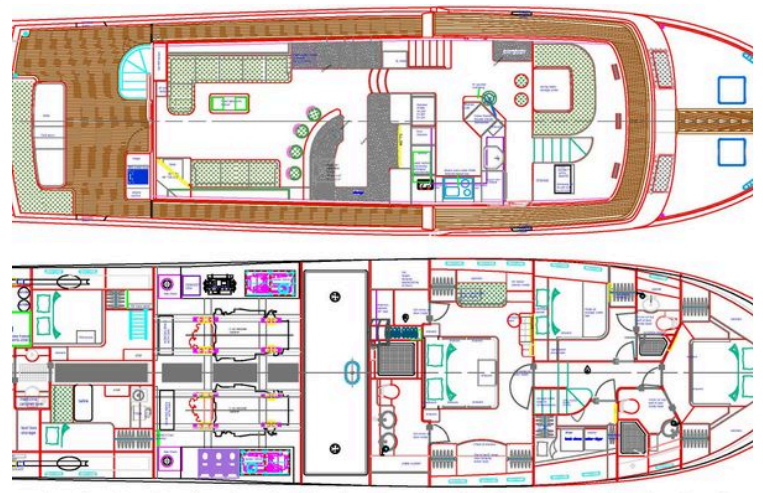
2018 Marlow 75E-CB yacht on a lift at a marina, ready for maintenance.



Propeller of 2018 Marlow 75E-CB yacht on dry dock, showcasing bronze blades.



Blueprint of 2018 Marlow 75E-CB yacht, showcasing side and top views with detailed layout.



Blueprint of 2018 Marlow 75E-CB yacht, showcasing detailed interior and deck layout.