

80 ft 2015 Marlow Explorer 80E-CB, FOMO

US\$3,840,000 Tax: Not Paid

Coral Gables, Florida, United States



Boat Details

Make:	Marlow	Hull Material:	Composite	Fuel Type:	Diesel
Model:	Explorer 80E-CB	Drive Type:	Direct Drive	Max Speed:	29 kn
Year:	2015	Beam:	21 ft 6 in	Max Draft:	5 ft 3 in
Length:	80 ft	Boat Location:	Coral Gables, Florida, United States		
Price:	US\$3,840,000	Name:	FOMO		
Condition:	Used	Guest Cabins:	4		
Class:	Motor Yacht	Guest Heads:	7		



Marlow Sales Department | Marlow Marine Sales, Inc.

Marlow Marine Sales, Inc., Snead Island, Florida, United States

Tel: +1 (941) 729-3370 Fax: 941-729-4955

sales@marlowmarine.com

Description

Introducing “FOMO”!!! The 2015 80E Marlow Explorer Command Bridge, with Skybridge — a stunning example of timeless craftsmanship, cutting-edge engineering, and luxurious design. This beautifully maintained yacht combines the elegance and performance Marlow is known for, with the added versatility of both a fully enclosed Command Bridge, and an upgraded open Skybridge, perfect for cruising or entertaining in any weather conditions. With her spacious layout, exceptional attention to detail, and powerful yet efficient performance with C-32 1800hp engines, she offers the perfect platform for extended cruising or elegant coastal adventures. Equipped with a wireless yacht controller, she can easily be handled by only 2 people but has crew space for 4. Her 4-stateroom layout also provides an abundance of space for family and friends to join the journey.

Information & Features

2015 Caterpillar C-32 Acert (Engine 1)

Engine Type:	Inboard	Drive Type:	Direct Drive	Propeller Material:	Alloy
Fuel Type:	Diesel	Power:	1800 hp		
Engine Hours:	1900	Propeller Type:	5 Blade		

2015 Caterpillar C-32 Acert (Engine 2)

Engine Type:	Inboard	Drive Type:	Direct Drive	Propeller Material:	Alloy
Fuel Type:	Diesel	Power:	1800 hp		
Engine Hours:	1900	Propeller Type:	5 Blade		

Dimensions

LOA:	86 ft 8 in	Max Draft:	5 ft 3 in
LWL:	74 ft 10 in		
Beam:	21 ft 6 in		

Weights

Displacement:	125,000 lb
---------------	-------------------

Speed

Cruising Speed:	25 kn
Max Speed:	29 kn

Tanks

Fuel:	1 x 3,900 gal
Fresh Water:	1 x 600 gal
Holding:	1 x 235 gal

Accommodations

Guest Cabins:	4
Guest Heads:	7

Other

Designer: **Marlow Design Team**

Notable Upgrades and Services

Hull Repainted (2025)

Bottom Paint (2025)

Shafts and running gear removed, reconditioned, aligned and oil replaced in shaft system (2025)

Prop speed on running gear and hydraulic platform gear (2025)

Replaced all zincs (2025)

Teak work. Exterior handrails and caprails re-varnished (2025)

Radar upgrade (2025)

Generators serviced (2025)

New Batteries x 8 (2025)

Glendenning Cable Master upgraded (2025)

Starlink added and upgraded Bluetooth system (2025)

A/C system services (2025)

Replaced & upgraded underwater lights (2025)

Fire System Inspection (2025)

Two New Chillers (2025)

New Salt-Water Pump (2025)

Full Exterior wax and polish (2025)

Hydraulic Swim Platform re-built and serviced (2025)

Overview

The moment you step aboard any Marlow Explorer, you're greeted by timeless elegance and impeccable craftsmanship. The low-profile, high-bow design reflects a true seaworthy heritage, while her sleek lines and flawless joinery exude quality throughout. "FOMO" embodies all of this and more and is truly one of a kind. From the carefully selected and perfectly placed equipment to her robust construction, every detail speaks to a vessel built without compromise.

The functional layout is complemented by a warm and spacious interior filled with extensive equipment, thoughtful options, and premium upgrades. Every interior space is trimmed in rich teak with teak and holly floors. A satin-finish, two-part varnish seals the wood, making upkeep as easy as light dusting. The chilled water air-conditioning system with reverse cycle heat ensures quiet, comfortable living in any climate. Seating areas are upholstered in Ultraleather over layers of variable-density foam for supreme comfort. Cedar-lined, lighted hanging lockers add both function and refinement, with an abundance of storage throughout.

Boarding "FOMO" is easy and flexible: enter from the stern via twin stairways connected to the large hydraulic swim platform, or from either side through forward or aft boarding gates. The swim platform itself is expansive, ideal for water activities or relaxed lounging. A large, hydraulically assisted transom door provides access to the lazarette, crew quarters, and engine room.

Twin staircases from port and starboard lead up to transom doors and into the spacious aft deck. This area is built for entertaining, with a high-gloss dining table, comfortable cockpit seating, a day head, and room for additional chairs to accommodate up to ten guests. Just to port of the salon doors, a built-in stairwell leads to the flybridge. Wide side decks with Portuguese bridge access provide safe and easy movement forward, and optional forward boarding gates add even more versatility when docking at varying heights. Access to the salon is seamless, with two large doors—one hinged, one sliding—that together open nearly five feet wide, creating a grand entrance and easy indoor-outdoor flow.

Salon

Upon entering from the aft deck, you're greeted by an expansive, open-plan salon with unobstructed sightlines extending all the way to the forward windshield, enhancing the sense of spaciousness. Large windows on both sides flood the area with natural light, creating a bright and airy ambiance. The floors are a beautiful high-gloss teak and holly. To port, there's a built-in sofa with storage beneath. Starboard has two free-standing chairs with a built-in coffee table between. Additional features include a wine locker, an entertainment center with a wet bar and icemaker, and a TV cabinet with an electric lift for invisible stowage of the TV. The salon also boasts lovely bent wood signature overhead handrails, adding to the yacht's classic charm.

- Large windows to port and starboard provide beautiful views while underway, and provide an abundance of natural lighting.
- Large open feel with built-in settees on both port and starboard side with built-in storage underneath.
- Dining table with seating for six forward of settees.
- Wet bar with granite counter top, wine cooler, fridge w/ ice-maker, and sink.
- Interior access to crew quarters and engine room aft port.
- TV built-in to forward cabinet behind sliding teak doors with additional storage cabinets to the sides.

Galley

Walking up three steps brings you to the spacious, modified U-shaped galley, featuring numerous upgrades including granite countertops, a stainless-steel Franke sink with a cutting board cover, Grohe faucets, and a garbage disposal. The galley is equipped with a full suite of appliances: a stovetop, electric range with oven, microwave, and two Sub-Zero refrigerator/freezer drawers (one located just forward of the galley). Ample cabinetry and drawer space ensure that everything you need is within reach. This open, well-appointed galley is perfect for entertaining, and gourmet chefs will thrive in its functional and elegant design. Located forward of the galley, the dining area is designed to seat twelve comfortably around a large U-shaped dinette. Surrounding the dining space are expansive windows constructed from laminated double-layer tempered glass, offering superior hurricane and weather resistance while enhancing physical security and maintaining watertight integrity. The 360-degree views from this elevated position are simply stunning. A built-in deep freezer and a pop-up TV to port add further convenience and entertainment options, ensuring guests are reluctant to leave.

- Large U-Shaped Galley midship with upgraded granite counter tops.
- Stainless steel Franke sink.
- Grohe faucet.
- Garbage disposal.
- Dacor glass-top electric range with removable stainless steel sea rails and pot holders.
- Dacor microwave.
- Three double drawer Sub-Zero refrigerator/freezer combo units.
- Fisher-Paykel inle drawer dishwasher.
- Storage cabinets throughout.
- Dining table and U-shaped settee forward.
- Large windows port, starboard, and forward for breathtaking views and natural light.
- Lift mounted TV to port.
- Opening doors port and starboard allow for fresh air and access to the side walkways.

Command Bridge

Located just a few steps up from the galley and dining area, the enclosed Command Bridge features satin teak finishes, and high-gloss teak and holly decks, Stidd double helm chairs, and a large L-settee with a hi/lo adjustable table that converts to an extra berth. A spacious head with shower, adjustable TV, three Garmin displays, multi-zone camera controls, dual ICOM VHF's, and a Subzero beverage center with icemaker offer exceptional comfort, which makes this area easy to convert into an extra stateroom for additional overnight guests. Port and starboard watertight sliding doors provide side deck access and excellent ventilation, while a hinged aft door leads to the flybridge deck. Large tempered windows with Ceramic tint offer 360-degree views, and overhead Ocean Aire hatches enhance ventilation. A lighted safety panel, windshield wipers, spotlight remotes, Kahlenberg airhorns, and the Yacht Controller complete the bridge's well-equipped layout.

- Two easy access points from galley stairs, or aft cockpit stairs.
- Fully enclosed bridge with helm station.
- High-gloss teak and holly floors.
- Burl wood and Ultraleather accent finishes.
- Two double wide Stidd helm chairs.
- Large L-shaped settee with hi/lo adjustable teak table which can convert into additional sleeping area if needed.
- Spacious head with standup shower.
- Adjustable position TV.
- Three Garmin touch screen displays.
- Multi-zone camera controls.
- Dual ICOM VHF radios.
- Subzero beverage center with icemaker.
- Sliding doors on port and starboard provide access to side decks and allow for cross ventilation and fresh air.
- Aft door accesses flybridge deck.
- Overhead dual opening hatches with screen for added air flow on nice days.
- Marlow proprietary safety and control panel conveniently located above helm station.
- Large windows provide great visibility from helm and settee.
- Yachtcontroller for ease of docking.

Upper Aft Deck

Aft of the Command Bridge, the spacious Upper Aft Deck features an extended hardtop, L-shaped settee/lounge with built-in storage, and space for additional teak seating. To port, a covered barbecue area includes a grill, sink, refrigerator with icemaker, and storage lockers. Full walkaround decks offer easy access to the foredeck with optional covered lounge, and a sliding hatch protects the stairs to the lower aft deck. Aft is the hydraulic 1600-lb davit. Stainless steel rails extend to the boat deck's edge, with removable N-rails around the dinghy launch area.

- Extended Hard Top.
- L-Shaped Settee/lounge with built-in storage.
- Grill.
- Refrigerator w/ Ice Maker.
- Storage lockers.
- Full walk-around bridge on both side of the command bridge leading to additional lounge space.
- Stainless-steel removable N-rails near dinghy launch side.

Skybridge

If you prefer an elevated and open-air bridge, the skybridge on "FOMO" will be your favorite spot. A full helm station complete with a Garmin touch screen, auto pilot, yacht controller, Icom Radio, charging station, and all necessary controls provides this additional space for running the boat, or relaxing from a birds eye view.

Helm Station with complete set of controls and navigation.

- Two helm seats.
- Built-in settee to port.
- Built-in settee forward of helm station.

Master Stateroom

The full-beam master stateroom provides a spacious and private retreat, complete with a king-size berth positioned centerline. Hanging lockers on both port and starboard sides, along with abundant drawer storage, offer excellent organization. Large portlights to either side bring in natural light and ocean views, enhancing the open and airy feel of the space. Luxurious touches include rich wood accents, custom furnishings, a built-in settee, and premium fixtures. The ensuite head features a large shower, granite countertops, Grohe fixtures, and an electric push-button toilet.

- King bed centerline.
- Cedar lined hanging lockers.
- Dresser drawers to starboard.
- Drawers under the berth.
- Cabinets storage.
- Built-in settee to port.
- Full head with large shower, granite countertops, and electric toilet.
- TV on forward wall.

VIP Stateroom

Located in the bow, the VIP stateroom offers a centerline queen berth surrounded by finely crafted woodwork and cabinetry. This space is bright and inviting thanks to multiple overhead hatches and portlights. Two small bunks, port and starboard, make this the perfect room for a family of 4 with small children. The ensuite head includes a spacious shower with a teak floor, granite counters, Grohe fixtures, and an electric toilet, providing the same high-end feel as the master.

- Queen centerline berth.
- Single bunks port and starboard.
- Overhead hatches and portlights.
- Cedar lined hanging lockers.
- En-suite head with spacious shower, bush-button toilet, granite counters, and Grohe fixtures.

Port Guest Stateroom

The Port guest stateroom features twin single berths, with built-in storage below and hanging lockers above. A convenient ensuite head offers a generous shower, granite countertop, Grohe fixtures, a large mirror, and an electric push-button toilet. The layout is flexible enough to serve as a day head for guests.

- Twin single berths.
- Storage drawers under berths.
- Cedar lined closet.
- En-suite head with standup shower, granite counter tops, push-button toilet, and Grohe fixtures.

Starboard Guest Stateroom

The starboard guest stateroom has twin side by side berths, with built in storage underneath, and a cedar lined hanging closet. Complete with an en-suite head, full shower, granite counter tops, electric push-button toilet, and Grohe fixtures.

- Twin side by side berths.
- Storage under berths.
- Cedar lined hanging closet.
- En-suite head with standup shower, granite counter tops, push-button toilet, and Grohe fixtures.

Crew Quarters

Crew accommodations are located aft and offer two single berths arranged in an L-shape, plus a private head and shower. The design mirrors the same quality found throughout the yacht, with wood accents, granite surfaces, and Grohe fixtures. A lounge area and dinette enhance the comfort of the crew, ensuring they feel at home. With thoughtful design and high-end finishes, the crew quarters contribute to a happy and efficient onboard experience.

- Two single berths.
- L-shaped settee with dinette.
- Granite surfaces.
- Wood accents.
- Grohe fixtures.

Hull/Deck

"FOMO" is constructed using state-of-the-art materials and modern techniques that emphasize strength, lightweight performance, and resistance to punctures. The hull design prioritizes safety, efficiency, and fuel economy at all speeds. Marlow uses its proprietary dry stack Resin Infusion Vacuum Assisted Transfer (RIVAT) process, which minimizes unnecessary bulk and enhances structural integrity and handling. The Corecell foam adds strength, durability, and water resistance.

The underbody includes twin Velocijet strut keels and propeller tunnels, which align thrust more efficiently with the hull for improved performance and protection. These structures enhance propeller safety and performance, especially in shallow waters or low-speed groundings.

Decks are finished with custom non-skid surfaces and broad waterways for effective water runoff. Teak decking is used throughout key areas, including the foredeck, aft deck, and side decks. Anchor systems include a yacht-controlled windlass and both Danforth and stainless-steel plow anchors, with heavy-duty hatches and stainless-steel railings for safety and ease of use.

A notable feature includes a large, backlit Marlow logo integrated into the stainless-steel bow rail. Seating is designed for comfort and practicality, including integrated storage for fenders and lines. Tank fills are accessible from both sides, and the yacht includes a sliding watertight tempered glass door for entry.

- Twin vertical anchor windlasses.
- 2 x Anchors Plow and Bruce.
- Chain anchor rode.
- Large foredeck cleats and hawse pipes.
- Retractable heavy duty stainless steel and teak swim ladder.
- Underwater lighting.
- Dayhead in the Aft Cockpit.

Engine Mechanical

The engine room aboard “FOMO” is spacious and thoughtfully designed for easy access to all systems and equipment. Fuel tanks are positioned forward for optimal weight balance and maintenance access, freeing up space around the engines. This layout enhances serviceability and helps extend maintenance intervals, preserving long-term value. The Twin 32kw generators, are each housed in its own sound-shielded and ventilated compartment. A Seakeeper Gyro for advanced stabilization is installed aft, under the lazarette stairs. Dual sea chests—cross-plumbed for redundancy—improve cooling efficiency and system safety, offering easier service access than conventional setups.

Powered by twin Caterpillar C32 ACERT engines (1800 HP each, 1900 hours), she can reach top speeds exceeding 29 knots. The engines are mounted on soft supports and sit on stainless-steel beds over carbon fiber stringers, minimizing vibration and enhancing performance. A carbon fiber thrust plate absorbs and transfers thrust smoothly to the hull.

An additional pump room forward contains freshwater pumps and filtration systems, separating drinking water from general freshwater output and ensuring clean onboard supply.

- Twin Caterpillar C32 ACERT 1800HP engines (1900 hours).
- Two 32 KW Kohler generators in custom sound shields.
- Seakeeper Gyro.
- Naiad Fin Stabilizers.
- Yacht Controller.
- 2x 4000-watt inverter and charger.
- 24-volt 60 Amp Charger.
- 12-volt 40 Amp Charger.
- Two ISO Transformers.
- Upgraded 48-volt Bow and Stern thrusters.
- 2 Forward 100 Amp Shore Power inlets and 2 Aft 100 Amp Glendenning Cable Masters.
- Backlighted electrical panels.
- Carbon Monoxide detectors in all berthing spaces.
- Oil filled shaft system with thrust plate.
- Soft Motor Mounts.
- Two Cross-Connected Sea Chest Water Intakes with cleanouts.
- Drypoint Demister Air Intake System.
- FRP Fuel Tank (3900 gallons) with sump and cleanout.
- Fuel Manifold and Proprietary Sight Gauge.
- Dual Racor Fuel Filters with Pressure Gauges for each Engine and Generator.
- Fire Suppressant System.
- Engine Room Lead/Foam Sound and Heat Insulation System.
- Heavy Duty (3700 GPH) Bilge Pump and High-Water Alarm.
- 4 220V High Volume Engine Room Blowers.
- Color Coded Piping.
- Polished Stainless-Steel Engine beds with Carbon Fiber Stringers.
- Gel-Coated Bilges.
- Oil Change System.
- LED Engine Room Lighting.
- Common Drainage System from Bow to Stern collects deck drain, scupper, and sump discharges.
- Underwater Exhaust.
- 50-gallon Hot Water Supply – 3 SS Tanks.
- Gray Water (235 Gallon) and Black Water (235 Gallon) holding tanks with dockside and at sea discharge controls.
- Fresh Water (600 Gallon) Tank.
- Upgraded Air-Conditioned Engine Room and Crew area with multi-zone control.

Electronics

- 12 KW 6 foot array 72 mile radar.
- Full Garmin Electronics Package with Simrad Autopilot and Yacht Controller.
- 8215 Garmin Touch Screen Displays.
- WiFi with Starlink wireless network.
- Intellian FB150 Sat Phone.
- ICOM M604 VHF with Trailor Horn.
- Garmin AIS-600
- Garmin GXM52 XM Satellite
- KVH Tracvision HD7 Sat TV.
- Majestic HDTV Air Broadcast Antenna.
- 3 Garmin GC10 Cameras.
- Bose Entertainment system with upgraded Bluetooth.

Lazarette

The lazarette has great storage space, two sound-shielded equipment rooms which house the generators, and a full-sized laundry area. The Seakeeper Gyro is located under the aft stairs, and there is natural lighting from the exterior windows. The large hydraulic assisted transom door makes it easy to move gear and equipment in and out when at dock, or at anchor.

DISCLAIMER

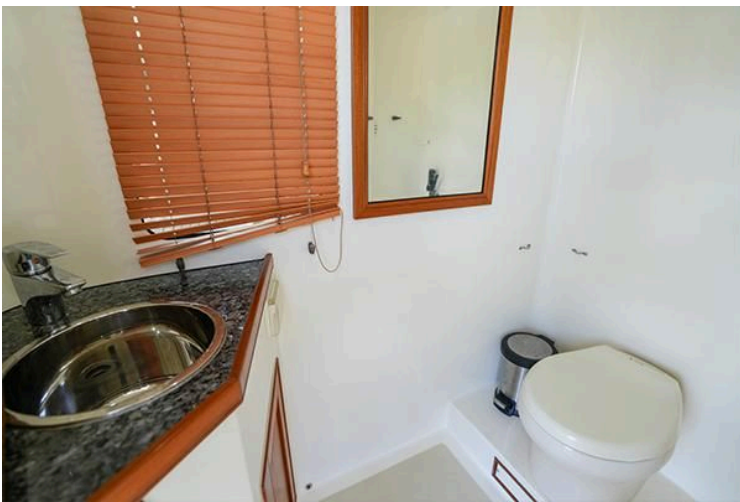
DISCLAIMER The company offers the details of this vessel in good faith, but cannot guarantee or warrant the accuracy of this information, nor warrant the condition of the vessel. A buyer should instruct their agents, or their surveyors, to investigate such details. The vessel is offered subject to prior sale, price change, or withdrawal without notice.



Luxury yacht Marlow 80E-CB, 2015 model, docked in a sunny marina setting.



Spacious deck of 2015 Marlow 80E-CB yacht with outdoor dining area.



Compact yacht bathroom with sink, toilet, mirror, and wooden blinds in Marlow 80E-CB, 2015 model.



Luxurious Marlow 80E-CB yacht interior with elegant seating and decor, 2015 model.



Luxurious interior of 2015 Marlow 80E-CB yacht with elegant seating and wooden finishes.



Luxurious Marlow 80E-CB 2015 yacht kitchen with granite countertops and wooden cabinetry.



Luxurious Marlow 80E-CB yacht interior with elegant wood finishes and modern kitchen, 2015 model.



Luxurious interior of 2015 Marlow 80E-CB yacht with elegant seating and wooden finishes.



Luxurious bedroom interior on 2015 Marlow 80E-CB yacht with elegant wood paneling.



Luxurious cabin interior of 2015 Marlow 80E-CB yacht with wood paneling and modern amenities.



Luxurious cabin interior of 2015 Marlow 80E-CB yacht with elegant wood finishes and cozy bedding.



Luxurious Marlow 80E-CB 2015 yacht interior with wooden paneling and cozy seating.



Luxurious Marlow 80E-CB 2015 yacht bathroom with wooden cabinetry and granite countertop.



Luxurious bathroom in 2015 Marlow 80E-CB yacht with granite countertop and glass shower.



Luxurious cabin interior of 2015 Marlow 80E-CB yacht with wooden finish and cozy bedding.



Luxurious Marlow 80E-CB 2015 yacht bathroom with wood accents and modern amenities.



Bunk beds with colorful bedding in a 2015 Marlow 80E-CB yacht cabin.



Luxurious Marlow 80E-CB 2015 yacht bathroom with wooden accents and modern fixtures.



Luxurious twin cabin on 2015 Marlow 80E-CB yacht with blue bedding and wood paneling.



Luxurious Marlow 80E-CB 2015 yacht bathroom with wooden cabinetry and modern fixtures.



Luxurious Marlow 80E-CB 2015 yacht interior with wooden finishes and cozy bedrooms.



Built-in washer and dryer on Marlow 80E-CB yacht, 2015 model, with wooden cabinetry.



Luxurious 2015 Marlow 80E-CB yacht with spacious deck and elegant seating.



Luxury Marlow 80E-CB yacht deck, 2015 model, with wooden walkway and blue fenders.



Luxury Marlow 80E-CB yacht, 2015 model, featuring elegant deck seating and sleek design.



Luxurious 2015 Marlow 80E-CB yacht deck with spacious seating and scenic marina view.



Luxurious Marlow 80E-CB 2015 yacht interior with wooden dining area and cushioned seating.



Luxurious interior of 2015 Marlow 80E-CB yacht with elegant seating and wooden flooring.



Luxurious Marlow 80E-CB 2015 yacht bathroom with wooden cabinetry and modern fixtures.



Luxury Marlow 80E-CB yacht deck with seating, table, and ladder, docked by palm trees.



Staircase and storage area on 2015 Marlow 80E-CB yacht deck.



Luxury Marlow 80E-CB yacht deck with seating, 2015 model, surrounded by lush greenery.



Flybridge of 2015 Marlow 80E-CB yacht with dual helm seats and scenic waterway view.



Helm station of 2015 Marlow 80E-CB yacht with navigation controls and steering wheel.



Flybridge of 2015 Marlow 80E-CB yacht with helm station and seating area.



Cabin interior of 2015 Marlow 80E-CB yacht with bunk beds and wooden stairs.



Luxurious Marlow 80E-CB 2015 yacht bathroom with wood accents and modern fixtures.



Engine room of 2015 Marlow 80E-CB yacht, featuring advanced Caterpillar machinery and equipment.



Luxury Marlow 80E-CB yacht cruising on open sea, 2015 model.



Luxurious 2015 Marlow 80E-CB yacht cruising on clear blue waters.



Luxurious 2015 Marlow 80E-CB yacht cruising on open sea under clear blue sky.



Luxury yacht Marlow 80E-CB 2015 cruising on open water under clear skies.