

53 ft 2021 Marlow 53E Explorer, CARA MIA

\$2,299,000

Stuart, FL



Boat Details

Make:	Marlow	Class:	Trawler	Guest Cabins:	3
Model:	53E Explorer	Hull Material:	Fiberglass	Guest Heads:	3
Year:	2021	Drive Type:	Direct Drive	Fuel Type:	Diesel
Length:	53 ft	Beam:	17 ft 3 in	Max Speed:	25 kn
Price:	\$2,299,000	Boat Location:	Stuart, FL	Max Draft:	4 ft 5 in
Condition:	Used	Name:	CARA MIA		



Marlow Sales Department | Marlow Marine Sales, Inc.

Marlow Marine Sales, Inc., Snead Island, Florida, United States

Tel: **941-729-3370** Fax: **941-729-4955**

sales@marlowmarine.com

www.yachtworld.com/marlowmarine

Description

CARA MIA is a stunning 2021 53E Marlow Explorer. With its massive mechanical space and high-volume interior and exterior, this vessel offers much more than your average 53-foot boat. This is one of the fastest models that Marlow has ever built, reaching speeds of around 25 knots with her upgraded CAT C-12.9 1000 HP motors as opposed to the smaller 850s. The elegant Marlow interior boasts a modern flair that appeals to both classic and contemporary tastes.

Key Features

- Upgraded 1,000 hp CAT C-12.9s with extended platinum plus CAT warranty until December 2026 or 1500 hrs (spare parts kit \$1,300)
- NIAD dual station stabilizers
- Bow and stern thruster
- Yacht controller wireless remote
- Full Isenglass enclosure added
- 600 gdp Bluwater watermaker
- Air-conditioned engine room 12,000 BTU
- Freedom lift for dinghy on stern
- FLIR nightvision camera
- GOST security system
- ElectroSea protection system for A/C's
- A/C on the Flybridge
- Upgraded refrigeration package (6 units)

Information & Features

CAT C-12.9 (Engine 1)

Engine Type: **Inboard**
Fuel Type: **Diesel**
Engine Hours: **600**

Drive Type: **Direct Drive**
Power: **1000 hp**

CAT C-12.9 (Engine 2)

Engine Type: **Inboard**
Fuel Type: **Diesel**
Engine Hours: **600**

Drive Type: **Direct Drive**
Power: **1000 hp**

Dimensions

LOA: **61 ft**
Beam: **17 ft 3 in**
Max Draft: **4 ft 5 in**

Weights

Displacement: **66,000 lb**

Speed

Cruising Speed: **20 kn**
Max Speed: **25 kn**

Tanks

Fuel: **1,200 gal**
Fresh Water: **300 gal**
Holding: **220 gal**

Accommodations

Guest Cabins: **3**
Guest Heads: **3**

Other

Hull Shape: **Semi Displacement**
Builder: **Marlow**

Overview

Upon boarding the 53E Marlow Explorer, you will notice the interior volume and expansive 360-degree views, large salon windows allowing for comfort as you cruise to your favorite locations. The pilothouse with a gourmet galley and dinette is large enough to seat family and friends together when underway and cruising. The comfortable salon has a large flat panel TV, Bose sound system, and built-in seating with storage. Being on this yacht gives the feeling of being at an exquisite home on the ocean.

The interior is built with a single, highest quality Burmese teak tree, ensuring that each grain is identically matched throughout the vessel. The satin teak finish is found throughout the salon, galley, and berth decks. Up to eight guests in three cabins. This includes a master suite with its own large head, a VIP with a queen berth plus two additional side berths, and a port guest room with twin berths.

Electronics

Flybridge Chart Plotters

- Garmin GPSMAP 8617 Glass Bridge MFD with g3 Charts
- 4" Stainless steel deck mount- Included in empty dome
- Garmin twin SD card reader USB

Radar & Autopilot

- Garmin GMR Phantom 54, 50 Watt, 4' Array Radar and Pedestal
- Garmin Reactor 40 Hydraulic Corepack with SmartPump v2
- Garmin GRF 10 Rudder Feedback Sensor
- Garmin GRF 10 Extension Cable
- Garmin CCU Extension Cable 25m

AIS & Satellite Weather

- Garmin AIS 800 Transceiver RX & TX
- Garmin GA 38 GPS/GLONASS Antenna
- Garmin GXM54 SiriusXM Sat WX/Audio Receiver
- Garmin GXM 54 Coupler
- Garmin 10m Audio extension cable

Instruments

- Airmar 235KHz, D/T, Thru-Hull N2K Smart Sensor
- Garmin gWind Wired Masthead Unit
- Garmin Instrument Display, GMI 20 Color LCD (one at flybridge, one at lower station)

Sounder

- Garmin GSD 25 Premium Sonar Module
- Garmin GT51M-THP CHIRP/Side/DownVu Xdcr Pair
- Garmin Extension Cable, XID Xdcr, 12-pin, 30'

Interfacing and Networking

- Garmin GMS10 Network port expander
- Miscellaneous cables & connectors (Bulk network cable, Mico cable & connectors, etc.)

VHF

- Icom VHF with hailer, N2K, Rear Mount Mic
- Com: Flush Mount Bracket for M504/604/802/506
- VHF ANT, 9Db 17.6' white with FME connector - AIS & VHF
- Rupp PAK-0006 4-way with standoffs
- 30/40 watt waterproof hailer horn

Lower Helm Station

- Garmin GPSMAP 8617 Glass Bridge MFD with g3 Charts
- Icom Command Mic IV for M424/506, black
- Icom extension cable, Command Mic III/IV, 20'

CCTV Systems

- Garmin GC 12 Marine Camera, Analog (aft deck, engine room, flybridge looking aft)
- Axis Communications 0742-001 Q7424-R Mk II Video Encoder

FLIR

- M332 Thermal Camera, 320x256, Stbd
- Garmin Marine Network PoE Isolation Coupler

High-def SAT TV

- KVH: TracVision UHD7 N. America SAT TV System- ACU to be mounted in Cabinet with AV equipment
- KVH: TracVision UHD7 empty dome/baseplateEMPTY DOME/BASEPLATE
- Custom fabricated antenna mount inside dummy dome- included (5) mounts
- DirecTV HD DVR, salon
- DirecTV HD Receiver
- 15' HDMI cables
- 25' HDMI cable, master

Local TV

- 15" Seawatch Marine TV antenna - Installed in empty KVH dome
- Ferrule Extension 4.5" S/S
- Channel Master 8-Port Distribution Amplifier

WIFI Extender - Internet Source 1

- AIGEAN: AN-7000 dual band, high power wifi client- 2.4GHz & 5GHz- Install in flybridge helm
- KJM stainless steel antenna mount

Cell - Internet Source 1

- MoFi Cellular Device- Integrated Broadband Router- Install in Salon AV Cabinet
- Wide Band Cell Ant. with Mount, white
- 75' extension cable

Wireless Network

- Linksys wireless router N type
- Blackbox RJ45 ethernet A/B switch
- Ubiquiti UniFi 802.11ac PoE+ Access Point 2.4ghz & 5ghz
- Ubiquiti ToughSwitch 8-Port Advanced POE Switch
- Ubiquiti UniFi Controller Cloud Key

Security & Monitoring System

- GOST Apparition Security & Monitoring Package (Includes: touchscreen, (2) key fobs, smoke detector, (1) motion detector, (2) door contacts, (1) high water sensor, (1) low DC voltage sensor, (1) mini-siren, (1) wifi communicator)
- Standard wireless door contact

Additional Information

- Garbage disposal in galley
- Fusion sound system with Bluetooth capabilities (staterooms, flybridge, salon, pilothouse)
- Full-size washer/dryer GE
- Bosch induction cooktop
- Dacor full-size oven
- GE microwave
- Satellite TV/Direct TV
- Smart TVs throughout
- Air conditioning in engine room 12,000 BTU
- Bow thruster, Lewmar 10 HP, 24V (controls, each station)
- Stern thruster, Lewmar 10 HP, 24V (controls, each station)
- Yacht Controller wireless engine/thruster control
- 600 GPD Bluewater desalinator water maker (remote control at helm & UV filter)
- Composite hardtop (including radar arch)
- Freedom lift for dinghy mounted on stern
- Stabilizers: Naiad Model 252 (dual station multi-sea controls, spline drive pump)
- Radar and electronic mast
- (4) Underwater lighting
- LED lighting package interior/exterior (includes 2 standard dimmers)
- Chilled water air conditioning
- Subzero double drawer refrigerator/freezer
- Miele 24" Speed Oven with microwave function
- Disposal at sink
- Digital Samsung 40" LED TV in main salon (includes custom cabinetry)
- Stidd powder-coated chair up/down
- TV lift
- Awlgrip coating, hull
- Oval exterior stainless hardware package, includes all exterior railing
- Bow seating (includes port and starboard doors to foredeck)
- Ultraleather seating surfaces in salon and pilothouse
- Sunbrella Home Interior fabrics upgrade
- Kenmore 5.0 CU FT freezer
- 700 lb davit
- Hubbel isolation transformers 2 (50A)

Disclaimer

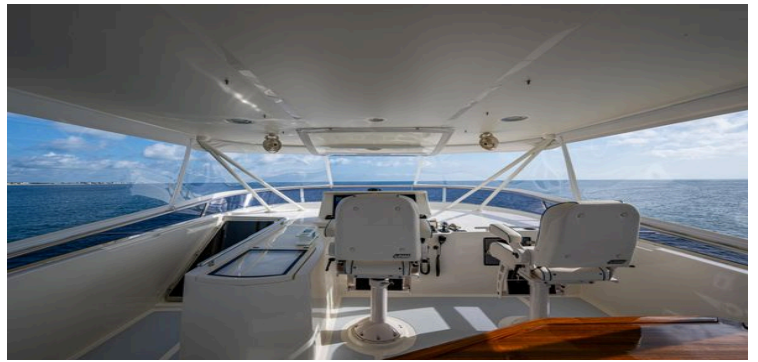
The Company offers the details of this vessel in good faith but cannot guarantee or warrant the accuracy of this information nor warrant the condition of the vessel. A buyer should instruct his agents, or his surveyors, to investigate such details as the buyer desires validated. Hours listed may vary from actual hours due to recent use. Purchaser is encouraged to verify hours prior to purchase. This vessel is offered subject to prior sale, price change, or withdrawal without notice.

Disclaimer

The Company offers the details of this vessel in good faith but cannot guarantee or warrant the accuracy of this information nor warrant the condition of the vessel. A buyer should instruct his agents, or his surveyors, to investigate such details as the buyer desires validated. This vessel is offered subject to prior sale, price change, or withdrawal without notice.



2021 Marlow 53E Explorer yacht cruising on open water under a partly cloudy sky.



Flybridge of 2021 Marlow 53E Explorer yacht with ocean view and helm chairs.



Cockpit of 2021 Marlow 53E Explorer yacht with navigation screens and ocean view.



Interior of 2021 Marlow 53E Explorer yacht with seating and ocean view.



Luxurious interior of 2021 Marlow 53E Explorer yacht with striped seating and ocean view.



Luxury Marlow 53E Explorer yacht deck with open fridge, 2021 model, scenic water view.



Interior of 2021 Marlow 53E Explorer yacht with striped seating and wooden table.



Marlow 53E Explorer yacht on open sea, rear view, 2021 model.



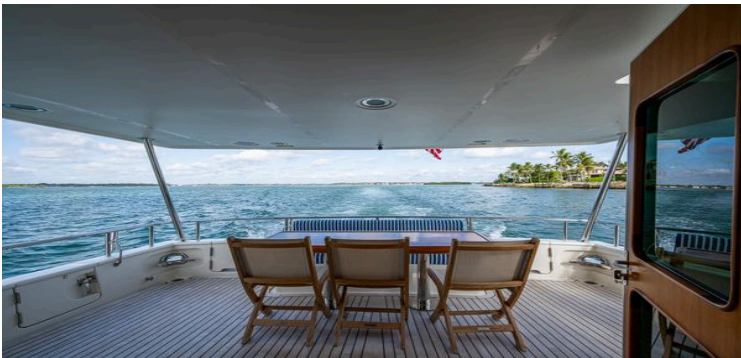
Stern view of 2021 Marlow 53E Explorer yacht cruising on open water.



Outdoor seating area on 2021 Marlow 53E Explorer yacht with ocean view.



Outdoor deck of 2021 Marlow 53E Explorer yacht with seating and ocean view.



Aft deck of 2021 Marlow 53E Explorer yacht with ocean view and seating.



Luxury Marlow 53E Explorer yacht deck with seating and scenic waterfront view, 2021 model.



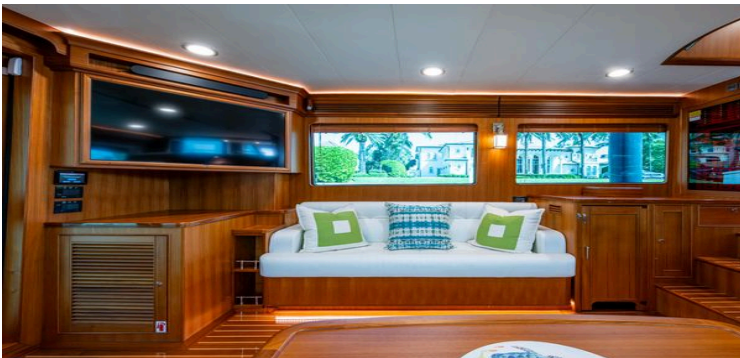
Luxurious interior of 2021 Marlow 53E Explorer yacht with elegant wood finishes and plush seating.



Luxurious interior of 2021 Marlow 53E Explorer yacht with elegant seating and wood finishes.



Luxurious interior of 2021 Marlow 53E Explorer yacht with elegant wood finish and plush seating.



Luxurious interior of 2021 Marlow 53E Explorer yacht with elegant wood finish and modern amenities.



Luxurious interior of 2021 Marlow 53E Explorer yacht with elegant wood finish and plush seating.



Luxurious interior of 2021 Marlow 53E Explorer yacht with elegant wood finishes and plush seating.



Luxurious kitchen interior of 2021 Marlow 53E Explorer yacht with wooden cabinetry and modern appliances.



Luxurious kitchen interior of 2021 Marlow 53E Explorer yacht with wooden cabinetry and modern fixtures.



Interior of 2021 Marlow 53E Explorer yacht with wooden helm and navigation equipment.



Pilothouse of 2021 Marlow 53E Explorer yacht with navigation controls and wooden steering wheel.



Luxurious interior of 2021 Marlow 53E Explorer yacht with elegant seating and panoramic windows.



Luxurious interior of 2021 Marlow 53E Explorer yacht with plush seating and modern design.



Interior of 2021 Marlow 53E Explorer yacht with wooden stairs and modern design.



Luxurious bedroom in 2021 Marlow 53E Explorer yacht with elegant wood finishes.



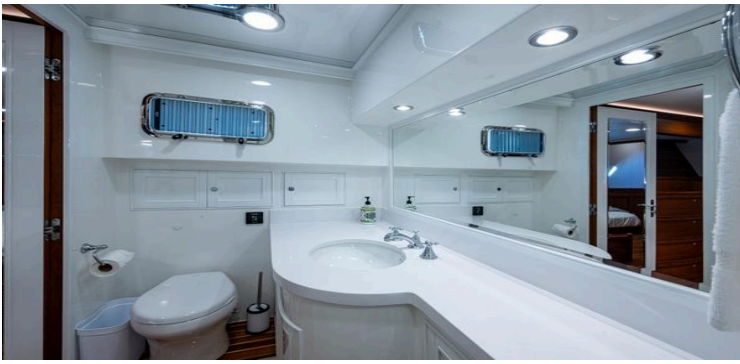
Luxurious cabin interior of 2021 Marlow 53E Explorer yacht with wood paneling and modern amenities.



Luxurious wooden interior of 2021 Marlow 53E Explorer yacht cabin.



Luxurious bathroom in 2021 Marlow 53E Explorer yacht, featuring modern fixtures and elegant design.



Luxurious bathroom in 2021 Marlow 53E Explorer yacht with modern fixtures and elegant design.



Luxurious cabin interior of 2021 Marlow 53E Explorer yacht with cozy bedding.



Luxurious cabin interior of 2021 Marlow 53E Explorer yacht with cozy bedding.



Luxurious cabin interior of 2021 Marlow 53E Explorer yacht with wood paneling and modern amenities.



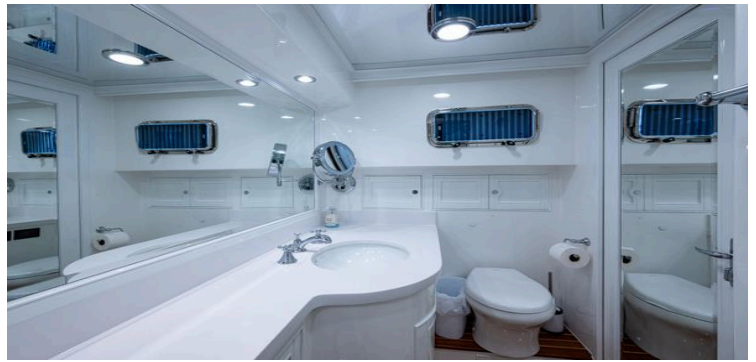
Luxurious bathroom in 2021 Marlow 53E Explorer yacht, featuring modern fixtures and elegant design.



Twin cabin interior of 2021 Marlow 53E Explorer yacht with wooden finish and cozy bedding.



Cabin interior of 2021 Marlow 53E Explorer yacht with twin beds and wooden paneling.



Luxurious bathroom in 2021 Marlow 53E Explorer yacht with modern fixtures and elegant design.



Laundry area with washer and dryer on Marlow 53E Explorer yacht, 2021 model.



Engine room of 2021 Marlow 53E Explorer yacht, showcasing advanced machinery and equipment.



Engine room of 2021 Marlow 53E Explorer yacht, showcasing advanced machinery and equipment.



Engine room of 2021 Marlow 53E Explorer yacht with equipment and safety gear.



Engine room of 2021 Marlow 53E Explorer yacht with control panels and equipment.



Engine room of 2021 Marlow 53E Explorer yacht, showcasing advanced machinery and gauges.



Engine room of 2021 Marlow 53E Explorer yacht, showcasing advanced machinery and clean design.





