

58 ft 2024 Marlow Explorer 58E, MARITIME

\$3,525,000

Key Largo, FL



Boat Details

| | | | | | |
|------------|---------------------|----------------|----------------------|------------|-------------------|
| Make: | Marlow | Class: | Motor Yacht | Max Draft: | 4 ft 10 in |
| Model: | Explorer 58E | Hull Material: | Composite | | |
| Year: | 2024 | Beam: | 18 ft 6 in | | |
| Length: | 58 ft | Boat Location: | Key Largo, FL | | |
| Price: | \$3,525,000 | Name: | MARITIME | | |
| Condition: | Used | Fuel Type: | Diesel | | |

Marlow Sales Department | Marlow Marine Sales, Inc.

Marlow Marine Sales, Inc., Snead Island, Florida, United States

Tel: **941-729-3370** Fax: **941-729-4955**

sales@marlowmarine.com

www.yachtworld.com/marlowmarine



Description

2024 Marlow Explorer 58E-CB "Maritime" is a perfect mix of the traditional Marlow Explorer trawler feel and contemporary interior design. She is elegant, comfortable, and extremely well-appointed. Powered by twin Volvo D13 1000HP engines with a fuel capacity of 1500USG, she has the flexibility of going on long-range cruises at 8 knots or getting you to the next destination in a hurry at 20+ knots. "Maritime" was built with a davit and a freedom lift, giving you flexibility on where to carry your tender depending on what kind of trip you are setting out for. A robust Garmin electronics package makes running this vessel a pleasure for any owner or captain. She was built with features such as twin generators, Naiad stabilizers, a command bridge with a day head, a custom 3 stateroom layout, and a custom galley forward, just to name a few.

Whether you are looking for a short-term cruiser or a live-aboard, "Maritime" has all the requirements that will satisfy and exceed your needs and expectations.

Information & Features

Volvo D13 (Engine 1)

| | | | |
|---------------|----------------|--------|----------------|
| Engine Type: | Inboard | Power: | 1000 hp |
| Fuel Type: | Diesel | | |
| Engine Hours: | 145 | | |

Volvo D13 (Engine 2)

| | | | |
|---------------|----------------|--------|----------------|
| Engine Type: | Inboard | Power: | 1000 hp |
| Fuel Type: | Diesel | | |
| Engine Hours: | 145 | | |

Dimensions

| | | | |
|-------|-------------------|------------|-------------------|
| LOA: | 70 ft 6 in | Max Draft: | 4 ft 10 in |
| LWL: | 54 ft 4 in | | |
| Beam: | 18 ft 6 in | | |

Weights

| | |
|-------------|------------------|
| Dry Weight: | 69,000 lb |
|-------------|------------------|

Tanks

| | |
|--------------|----------------------|
| Fuel: | 1 x 1,500 gal |
| Fresh Water: | 1 x 320 gal |
| Holding: | 1 x 120 gal |

Other

| | |
|-------------|--------------------------|
| Hull Shape: | Semi Displacement |
| Designer: | David Marlow |
| Builder: | Marlow Yachts LTD |

Notable Upgrades and Equipment

- Twin Volvo D13 1000HP engines (with Volvo 5-year extended warranty)
- Twin 21kW Kohler Generators
- 1000lbs Aritex Davit (Full Hydraulic Positioning & Rotation-Telescoping)
- Freedom Lift
- Tender (2024) - Walker Bay Generation 12 LTE w/ 40HP Yamaha
- AGM Batteries
- Painted Caprails and stainless handrails
- Upgraded exterior oval handrail package
- Robust Electronics package- 22" Garmin MFDs, Garmin autopilot, AIS, KVH, CCTV, VHF etc.
- 20 HP Electric Bow and Stern Thrusters
- Yacht Controller Wireless Remote
- Spotzero RO water treatment system
- ElectroSea strainer
- Naiad Stabilizers Model 252
- Custom 3 stateroom layout with a full king size master bed, VIP stateroom forward, and guest stateroom to starboard.
- Custom layout includes a pass-thru feature that allows access from the master stateroom into engine room and beach club through a utility area that houses the washer and dryer.
- Custom Command Bridge built with carbon fiber to reduce weight aloft. It includes a day head to port and a large seating area to starboard and aft.
- Air-Conditioned Beach Club with bunks, head, shower, and ample storage.
- Washer and Dryer (Full Size GE)
- Upgraded Subzero refrigerator/freezers
- Wine cooler
- SubZero ComboDEU2450CI refrigerator with ice maker
- Dacor Oven and Cooktop
- Custom galley forward with center island
- Custom Salon layout with hidden storage on forward wall
- Upgraded Audio system throughout- Sonos and Fusion
- Upgraded Ultraleather and Sunbrella Fabrics
- Upgraded countertops. Silestone White Zeus Extreme.
- Upgraded Dometic macerator toilets.
- Upgraded OceanAir blinds throughout
- Ample outdoor seating in cockpit, bow, and upper aft deck.
- All interior lights are LED for low amp draw no heat
- All exterior lights are LED for low amp draw no heat
- Teak and Holly with gloss finish throughout

Salon

- Teak and Holly floors with gloss finish
- Professionally designed sconces in the Salon
- SubZero ComboDEU2450CI refrigerator with ice maker
- Wine Cooler with stainless door
- Liquor storage
- Glass storage
- Custom hidden storage on forward wall
- Upgraded OceanAir blinds
- Samsung LED TV
- Silestone White Zeus Extreme Bar Countertop

Galley/ Dining

- Subzero double refrigerator unit
- Subzero double freezer unit
- Dacor Cooktop
- Dacor Oven
- Disposal at sink
- Large Sink
- OceanAir blinds
- Silestone White Zeus Extreme Countertops
- Custom galley forward layout with center island and dining table aft
- Storage throughout
- Slide-out control station hidden in starboard side galley cabinetry
- Pre-plumbed for dishwasher

Deck/ Cockpit

- Oyster White Hull and Superstructure
- Upgraded oval exterior stainless hardware package
- Tender (2024) - Walker Bay Generation 12 LTE w/ 40HP Yamaha
- 1000lbs Aritex Davit (Full Hydraulic Positioning & Rotation- Telescoping)
- Freedom Lift
- Painted cap rails with Stainless Steel Handrail
- Settees on cockpit with FRP tables
- Docking Station (port cockpit)
- Ample seating on cockpit, bow, and upper aft deck

Engine/ Mechanical

- Air-conditioned Engine Room
- Twin Volvo D13 1000HP engines (145hrs)
- Twin 21kW Kohler generator in custom sound shields
- Yacht Controller
- SpotZero RO water treatment system
- Xantrex inverter and charger
- 20HP Bow Thruster
- 20HP Stern Thruster
- Backlit electrical Panels
- Carbon Monoxide detectors throughout
- Soft Motor Mounts
- Two Cross-Connected Sea Chest Sea Water Intakes with cleanouts
- FRP Fuel Tanks (1500 gallons total capacity) with sump and cleanout
- Fuel Manifold and proprietary Sight Gauge
- Dual Racor fuel filters for each engine and generator
- Fire Suppressant System
- Engine Room Sound and Heat Insulation System
- High Volume Engine Room Blowers
- Painted bilges
- Oil change system
- Common Drainage System from Bow to Stern collects deck drain, scupper and sump discharges
- Underwater Exhaust
- AGM Batteries
- Naiad 252 Model Stabilizers
- Large lazarette space for storage, spare parts, water toys, etc.
- ElectroSea strainer
- Upgraded Dometic Chilled Water Air Conditioning system

Tender

- Tender (2024)
- Walker Bay Generation 12 LTE w/ 40HP Yamaha

Command Bridge

- Custom layout that includes a Day Head, oversized table, added storage drawers, TV hookup
- Ample storage throughout
- Garmin Screens
- Autopilot
- Instrument Displays
- VHF
- Throttle Controls
- Bow and Stern Thruster Controls
- Yacht Controller
- Naiad stabilizer controls
- Oversized Seating Area
- Teak and Holly floors with gloss finish
- Command Bridge walls finished in teak paneling throughout
- STIDD captain's chair
- OceanAir blinds
- Professionally designed sconce in Command Bridge

Electronics

- Two (2) Garmin 22" MFD
- Garmin Open Array Radar
- Garmin Autopilot
- 2 ICOM VHF
- Garmin AIS 800
- 2 Garmin GMI
- High-Definition SAT TV KVH Tracvision HD7
- 3 CCTV Cameras
- Wireless Internet (two sources)
- Satellite Weather and Sirius XM Antenna
- Sonos sound system in Salon
- Fusion sound system throughout

Master Stateroom

- Teak and Holly floors
- Professionally designed sconces
- Grohe head shower
- Grohe chrome faucet
- Upgraded Silestone White Zeus Extreme master head countertop
- Dometic toilet
- Samsung LED TV
- Custom Layout with centerline King bed.
- Walk-thru into laundry room and engine room from master head

VIP Stateroom

- Teak and Holly floors
- Grohe head shower in guest head
- Grohe chrome faucet in guest head
- Upgraded Silestone White Zeus Extreme guest head countertop
- Dometic toilet
- Samsung LED TV
- Hanging lockers & storage drawers

Starboard Guest Stateroom

- Teak and Holly Floors
- Samsung LED TV
- Hanging locker and ample storage
- Double bed

Exclusions

Owner's personal belongings

Disclaimer

The Company offers the details of this vessel in good faith but cannot guarantee or warrant the accuracy of this information nor warrant the condition of the vessel. A buyer should instruct his agents, or his surveyors, to investigate such details as the buyer desires validated. This vessel is offered subject to prior sale, price change, or withdrawal without notice.



Luxurious interior of 2024 Marlow Explorer 58E yacht with elegant wood finishes and plush seating.



Luxurious interior of 2024 Marlow Explorer 58E yacht with white seating and ocean view.



Luxurious interior of 2024 Marlow Explorer 58E yacht with elegant seating and ocean view.



Luxurious interior of 2024 Marlow Explorer 58E yacht with elegant wood finishes and ocean view.



Luxurious interior of 2024 Marlow Explorer 58E yacht with elegant seating and ocean view.



Luxurious interior of 2024 Marlow Explorer 58E yacht with elegant wood finishes.



Luxurious interior of 2024 Marlow Explorer 58E yacht with sleek wood flooring and modern appliances.



Luxurious interior of 2024 Marlow Explorer 58E yacht with modern kitchen design.



Luxurious interior of 2024 Marlow Explorer 58E yacht with elegant wood finishes and modern seating.



Luxurious interior of 2024 Marlow Explorer 58E yacht with modern kitchen and dining area.



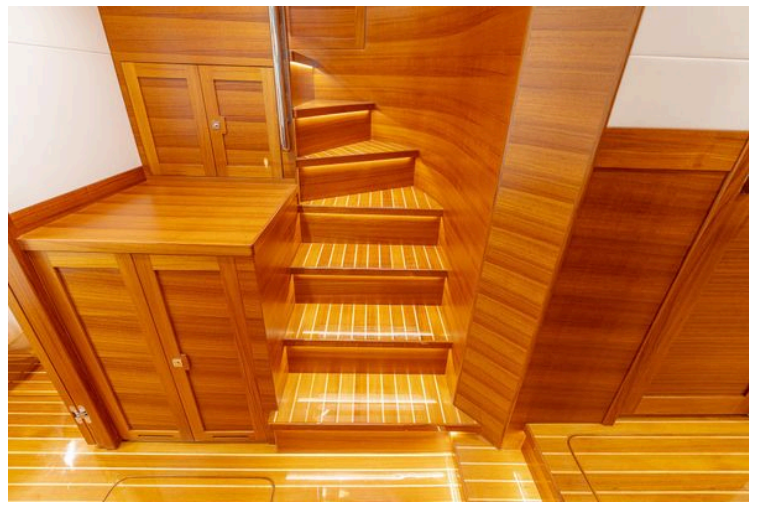
2024 Marlow Explorer 58E yacht kitchen with modern appliances and wooden cabinetry.



2024 Marlow Explorer 58E yacht kitchen with sleek wood cabinetry and modern appliances.



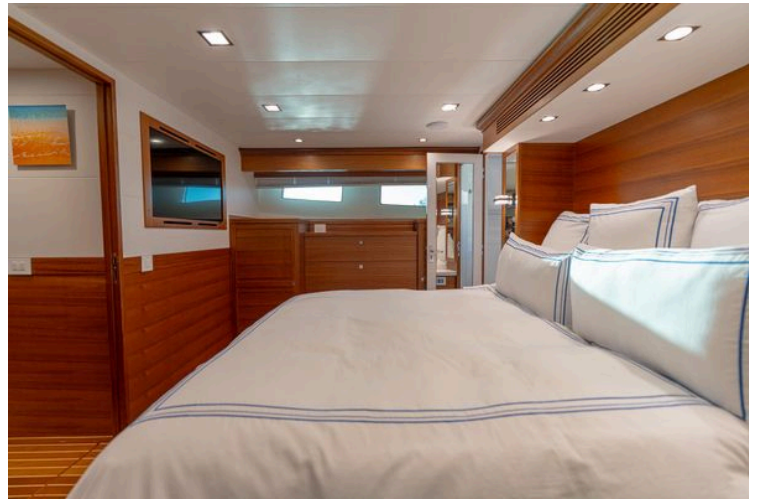
2024 Marlow Explorer 58E yacht interior with open drawer and control panel.



Luxurious wooden staircase inside 2024 Marlow Explorer 58E yacht.



Luxurious bedroom interior of 2024 Marlow Explorer 58E yacht with elegant wood paneling.



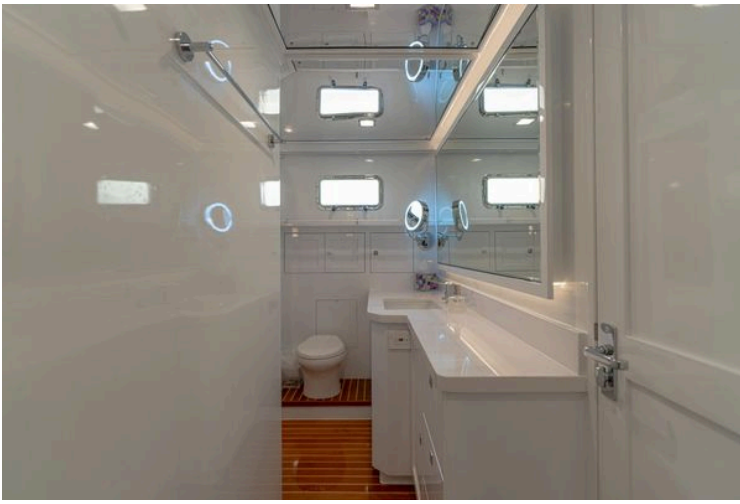
Luxurious cabin interior of 2024 Marlow Explorer 58E yacht with elegant wood paneling.



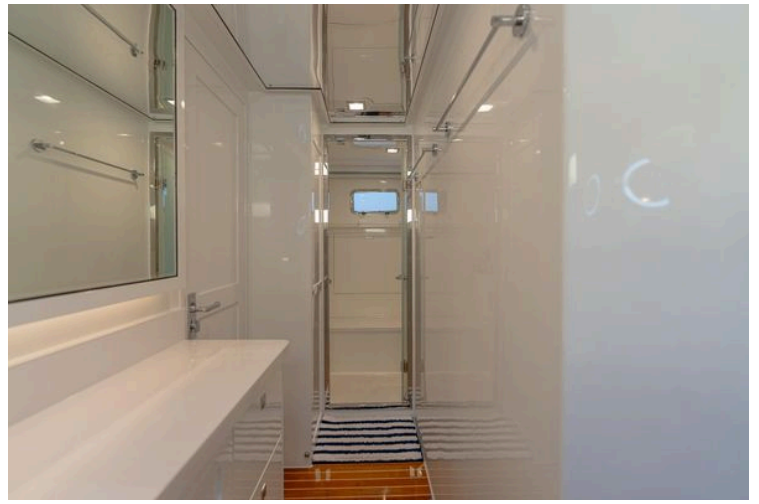
Luxurious cabin interior of 2024 Marlow Explorer 58E yacht with elegant wood finish.



Luxurious cabin interior of 2024 Marlow Explorer 58E yacht with elegant wood finish.



Luxurious bathroom interior of 2024 Marlow Explorer 58E yacht, featuring sleek design and modern fixtures.



2024 Marlow Explorer 58E yacht interior with sleek white cabinetry and striped rug.



Luxurious wooden interior hallway of 2024 Marlow Explorer 58E yacht.



Luxurious cabin interior of 2024 Marlow Explorer 58E yacht with cozy bedding.



Luxurious cabin interior of 2024 Marlow Explorer 58E yacht with nautical-themed decor.



2024 Marlow Explorer 58E cabin with wooden interior, bed, and wall-mounted TV.



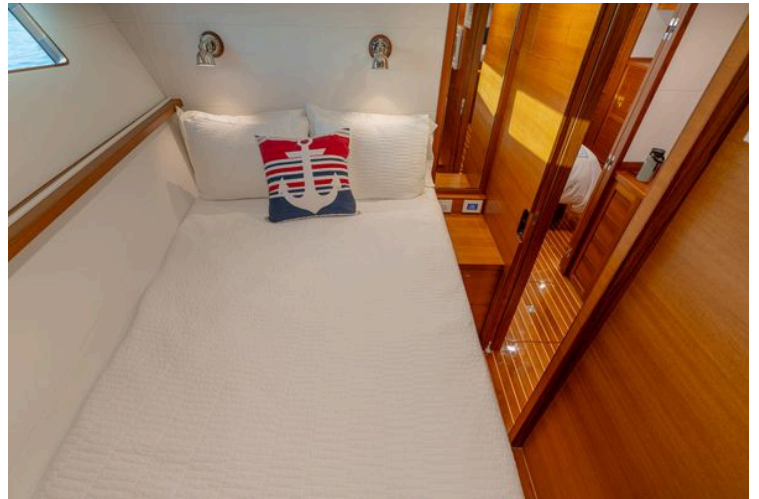
Luxurious cabin interior of 2024 Marlow Explorer 58E yacht with elegant bedding.



Luxurious interior of 2024 Marlow Explorer 58E yacht with wooden finishes and modern amenities.



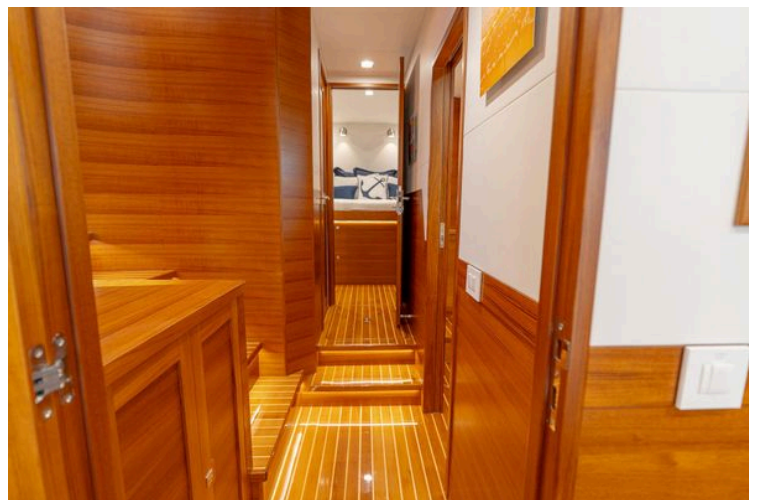
Luxurious bathroom in 2024 Marlow Explorer 58E yacht with modern fixtures and nautical decor.



2024 Marlow Explorer 58E cabin with nautical-themed decor and wooden interior.



2024 Marlow Explorer 58E interior with wood paneling, wall art, and mounted TV.



Luxurious wooden interior of 2024 Marlow Explorer 58E yacht hallway.



2024 Marlow Explorer 58E yacht interior with helm, seating, and navigation equipment.



Luxurious interior of 2024 Marlow Explorer 58E yacht with wooden finishes and panoramic windows.



2024 Marlow Explorer 58E yacht helm with navigation screens and wooden steering wheel.



2024 Marlow Explorer 58E helm with dual navigation screens and wooden steering wheel.



2024 Marlow Explorer 58E helm with dual navigation screens and control panels.



2024 Marlow Explorer 58E yacht on calm water, showcasing sleek design and spacious deck.



2024 Marlow Explorer 58E yacht on calm water, showcasing sleek design and spacious deck.



2024 Marlow Explorer 58E yacht deck with seating and ocean view.



2024 Marlow Explorer 58E yacht with striped seating and table, cruising on open water.



2024 Marlow Explorer 58E yacht with a small boat on deck, overlooking calm waters.



2024 Marlow Explorer 58E yacht with tender on deck, overlooking calm waters.



Blue striped seating on 2024 Marlow Explorer 58E yacht deck.



2024 Marlow Explorer 58E yacht cruising on open water under cloudy skies.

