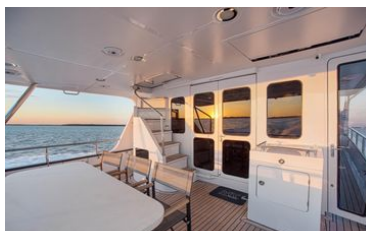
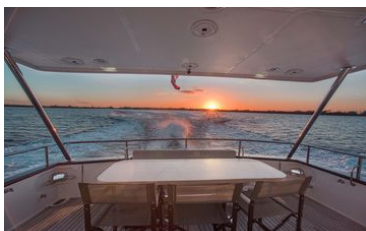


70 ft 2023 Marlow Explorer 70E-CB, INCORRIGIBLE

\$5,725,000

Palmetto, FL



Boat Details

Make:	Marlow	Class:	Trawler	Guest Cabins:	3
Model:	Explorer 70E-CB	Hull Material:	Composite	Crew Cabins:	2
Year:	2023	Drive Type:	Direct Drive	Guest Heads:	5
Price:	\$5,725,000	Beam:	19 ft 8 in	Crew Heads:	2
Condition:	Used	Name:	INCORRIGIBLE	Fuel Type:	Diesel



Marlow Sales Department | Marlow Marine Sales, Inc.

Marlow Marine Sales, Inc., Snead Island, Florida, United States

Tel: +1 (941) 729-3370 Fax: 941-729-4955

sales@marlowmarine.com

Description

Incorrigible is a 70E that has been built with a more modern flare. Her Awlcraft Stone Gray Metallic hull paint, Matterhorn White Superstructure and Carbon fiber cap rails give her a more modern feel inside and out. With her C-18 1150HP diesel engines with generously sized 3,000 gallon fuel tank, she offers the range needed to venture to any corner of the globe. She gets 1 KMPG at about 8 knots yet can cruise at 19-20 knots at 75% load. This exceptional yacht truly stands as one of the most upgraded Marlow Yachts on the water today. The 70E is the perfect size for the owner that wants to be able to run their own boat or have crew.

The interior upgrades include a Savant home theater system that rivals any system on land. The Galley is outfitted with the best equipment from Bosch, Gaggenau, and Sub Zero and even has a Zip Hydro tap system providing hot, cold, and sparkling water on demand.

The Full beam master with her oversize lights is stunning and has a head with Bidet, Steam Shower, and heated floors and a walk in closet.

You won't find a better outfitted cruising yacht under 100' than Incorporrigible.

Information & Features

Caterpillar C-18 (Engine 1)

Engine Type:	Inboard	Drive Type:	Direct Drive
Fuel Type:	Diesel	Power:	1150 hp
Engine Hours:	760	Propeller Type:	5 Blade

Caterpillar C-18 (Engine 2)

Engine Type:	Inboard	Drive Type:	Direct Drive
Fuel Type:	Diesel	Power:	1150 hp
Engine Hours:	760	Propeller Type:	5 Blade

Dimensions

LOA:	82 ft 4 in	Max Bridge Clearance:	18 ft 8 in
LWL:	69 ft	Max Draft:	5 ft
Beam:	19 ft 8 in		

Weights

Displacement:	110,000 lb
---------------	-------------------

Speed

Cruising Speed:	20 kn
Max Speed:	26 kn

Tanks

Fuel:	3,000 gal
Fresh Water:	400 gal
Holding:	150 gal

Accommodations

Guest Cabins: **3**

Crew Heads: **2**

Crew Cabins: **2**

Guest Heads: **5**

Notable Features

- Twin 1150HP C18 Caterpillar Diesel engines
- Upgraded Seatorque fluid filled shaft system
- Metallic Gray with Clearcoat AwlGrip painted hull.
- Matterhorn White Awlgrip painted superstructure
- Full Beam Master Stateroom with oversize windows and Head with 2 sinks and Steam Shower head with Bidet function
- CMC Zero Speed stabilizers
- Side power 48V bow and stern thrusters with proportional controls
- Galley forward with island and large seating area
- Custom Command bridge with Captains Quarters and full head
- Second crews quarters aft of the engine room
- Unique 3 stateroom Layout with island queen in 3rd stateroom instead of traditional bunk arrangement.
- State of the art Garmin Electronics package
- Starlink Internet
- Savant Home Theater System throughout the vessel
- Freedom Lift for Dingy
- Custom designed exterior seating in bow and Command Bridge aft deck
- Oversize Master Stateroom portlights
- Electric Blinds throughout the vessel
- Upgraded LED lighting throughout the vessel
- Satin Teak and Ebony Floors
- Ghost Security System
- Reinforced corner cleats for towing
- Forward boarding doors in Portuguese Bridge
- Bluewater Desalinators Legend Clearmate system with 1500GPD water maker and 2000GPD water softener
- Brownie's dive compressor model YP 100 Essential with remote mount manifold/fill connection and fill hose for two tank
- Underwater lights to six (6) Lumishore thru hull units with LED insert changeable from inside the boat

Salon

Step into the salon and be welcomed by the stunning satin teak woodwork complemented by a Satin teak and Ebony sole. Expansive panoramic windows flood the area with natural light, creating a warm and inviting atmosphere. On the Port side, a built-in settee and oversize coffee table with ottomans. The salon has a Sub Zero beverage center, ice maker and wine cooler and ample storage for glassware and bottles. The 75" tv is forward and swings out to reveal the Savant entertainment system. The upper half of the walls in the salon have been finished in a soft white material that really brightens the space compared to an all teak interior. The overhead lights and wall sconces have a bit of a modern flair. The yacht is simply stunning.

Aft of the settee is an overhead storage cabinet for entertaining glass storage and there is a drink refrigerator below. Forward of the settee you will find a full size wine cooler and ice maker.

- 24" SubZero refrigerator
- Full Size Wine cooler
- Ice Maker
- 75" Samsung smart TV
- Glass and bottle storage
- Oversize satin teak table with integrated ottomans

Galley/Pilothouse

The Spacious Galley forward with center island provide expansive counterspace. The well-appointed galley is equipped with amenities tailored for culinary enthusiasts and chefs alike. Enjoy breathtaking panoramic views through the expansive forward windows. Two overhead hatches and the Port Pilothouse door can be opened when the weather allows.

- Large U Shaped Seating area facing forward, with Teak table
- Gagganeau induction cooktop
- Gagganeau pop up in counter exhaust fan
- (6) Sub Zero refrigerator/freezer drawers (4 refrigerator and 2 freezer)
- Full Size Bosch dishwasher
- Full Size Bosch oven
- Large Sink with garbage disposal.
- Bosch speed oven Convection Microwave
- Zip Hydrotap system providing cold water, hot water, and sparkling water

Command Bridge/Upper Aft Deck

The vessel features a fully enclosed, climate-controlled command bridge. The helm features 3 main 24" navigation displays and a smaller multifunction screen port and starboard for any desired information. The dash itself and the surrounding area have been finished in a matte black and black carbon fiber. This is the best finish for those that run long distances at night because it reduces glare. Overhead you find all the information displays to operate the vessel. You can monitor the batteries, tanks, stabilizers and directly overhead is a diagram of the yacht that shows safety alarms for high water, high exhaust temperature and even the status of the engine room and engine room doors.

The Black Stidd Helm chairs with polished chrome bases are beautiful. The floor of the command bridge is done in gray non skid like the exterior decks so you don't have to worry about water being tracked in when you are moving around using the yacht controller outside. In side the Command Bridge area there is a SubZero Beverage center, a 2 Drawer SubZero Freezer unit, and a 24 can drink drawer.

Aft of the helm is a generous seating area with a large teak table. This will be a popular spot underway. Aft of the seating area is a captains cabin that has easy access to the full head and shower on this level.

Once you exit the command bridge aft door you find a large seating space. There is a full beam U shaped area aft and a nice bench and table forward by the door that is under the protection of the command bridge hard top. This is a great entertaining area and has a large sun shade that can be installed easily. There is a 24 can drawer for beverages under the seating unit.

- State of the Art Garmin Navigation Package
- Large Seating area with Teak Table
- SubZero Beverage Center
- SubZero 2 Drawer Freezer unit with Ice maker
- (2) Single Drawer beverage units
- Day head with shower
- (2) Stidd helm chairs
- Captains Cabin in Command Bridge
- Extended hardtop

Electronics

- 3 Garmin 8624 MFD Command Bridge
- 2 Garmin 8612 MFD Command Bridge
- 1 Garmin 743 chart plotter in Master
- 1 Garmin 8610 in Lower Crew area
- Garmin GMR Phantom 256 Radar 6' Array
- 4ft, 50W solid-state open-array radar
- Garmin GSD26 Digital Sounder
- Garmin B265LH CHIRP Transducer
- Garmin Autopilot Reactor 40 Hydraulic Corepack w/SmartPump v2 & GHC20
- 2 Garmin VHF 315 Radios
- Vesper XB-8000 AIS Transponder Nav Station Package
- 4 Garmin GMI20 Instrument Displays
- Airmar DST800 Smart Sensor/DST
- Airmar 220WX Ultrasonic Weather Station
- Garmin MSC10 Satellite Compass
- FLIR M364C Stabilized Thermal Visible IP Camera
- 4 Garmin GC14 Cameras
- GOST Apparition-SM+ Package
- GOST Apparition Nav-Tracker-80
- GOST GMM-IP67-HWS High Water Sensor
- Garmin GXM54 Sat WX/Radio Antenna
- Intellian S80HD Sat TV-NX
- Pepwave MAX HD4 MBX Load Balancing/Bonding Router
- Savant Home Theater System

Master Stateroom

Indulge in the luxurious full beam master stateroom. The full-sized centerline king berth offers a serene and comfortable space to relax and rejuvenate. Ample storage is provided by large walk in closet aft and ample storage lockers outboard and beneath the bed. Large port windows provide stunning views at the waterline for a truly immersive experience.

- Custom cabinetry with Shagreen fabric inserts on doors and drawers
- Large head with 2 sinks and oversize steam shower and heated floors
- Tecma Ceramic toilet with Bidet function, and heated seat
- Oversize windows in hull side providing a view of the water when sitting on the bed
- Custom Headboard
- 65" Samsung smart TV
- Walk in closet

VIP Stateroom

The spacious VIP stateroom features a King berth on centerline. Guests can enjoy the comfort and luxury of a private ensuite head with a generously sized shower. A large overhead skylight is on the centerline create a bright and welcoming atmosphere that ensures guests will feel pampered and at ease during extended trips on the water. There are port and starboard hanging lockers and 6 storage drawers below the berth. The stateroom and a very large overhead portlight for natural light and features a toilet with Bidet function and large shower. The headboard is the entire forward wall and is covered in beautiful fabric panels and accented by wall sconces.

Starboard Guest Berth

This stateroom was enlarged to provide more space for the island queen berth. Located to the starboard side of the companionway, This is a great upgrade from couple's over the standard bunk arrangement. There is a generous hanging locker forward outboard adjacent to the private head with separate shower. The portlights in here have been enlarged so that you can see down to the water which makes the space seem much more open. The aft wall is the headboard and is covered beautiful gray fabric and features a circular mirror and elegant wall sconces.

Companionway

The spacious companionway features a full-size washer and dryer with a perfectly sized overhead storage compartment for detergent and additional supplies adding both convenience and functionality to the space. The walls feature a soft off white fabric above the chair rail brightening the space. The space is open to the stairs and has a generous width allowing you to avoid the feeling of being cramped. There is a folding table that slides out from above the full size washer and dryer.

A large hatch in the floor provides access to a large well lit storage area. This space houses the fresh water system that includes 3 Head Hunter 120VAC fresh water pumps. Two units serve the fresh water system in the boat and the third if for the high pressure washdown spigots outside for washing the boat.

Aft Deck/Cockpit

The aft deck welcomes you with a large solid surface table and built in bench seat. When you set up the 3 chairs on the forward side you have very comfortable seating for 6. The overhead is fully protected by the extended boat deck. A 40" TV folds down from the ceiling.

- Built in 40" folding TV from Ceiling for viewing while in cockpit
- Fixed cockpit controls for thrusters and engines
- Crew quarter and engine room access through large hydraulic "garage door" at the transom
- Freedom lift for a dinghy with wireless remote and removable arms
- Stainless steel N-Rails with custom built in storage on swim platform
- Freedom automatic swim platform steps

Crew/Lazarette

The lower deck captains quarters can be found aft of the engine room and has a private room with a double berth. There is a nice seating area for 2-3 with a table and a good size TV on the starboard side. This settee can also serve as a 3rd berth when needed. This space is finely finished like the rest of the yacht and I am sure there are family and friends that would be very happy down here when you have a small crowd on board. The space is very private and has a beautiful head and shower.

There is great storage space aft in the Lazarette. This can be accessed by the large opening transom door when in port. There is a built in toolbox on the port side.

Electrical

- (2) Glendenning cablemasters with wireless controls (1) 100 amp and (1) 50amp aft
- Bow Shore Power connectors (50amp and 100 amp)
- Outback 3,500 Watt Inverter / Charger
- Voltage and Amp Draw meters at electrical panel and helm station
- 48V DC Battery charger
- 6 Underwater lights with infinite colors and remote control
- (2) 24Kw 60Hz Kohler generators with power share (1,300 hrs each)
- Upgraded Exterior Blue White exterior lighting
- Upgraded Interior LED lighting package
- Large house Bank
- Engine Alternator isolators to charge engine and house banks when running

Mechanical Equipment

- Twin vertical Windlasses
- 80KG Ultra anchor to starboard side with 300' 1/2" chain
- 70KG Bruce secondary anchor
- 2 Headhunter Mach 5 water pumps
- Fireboy fire suppression system
- AGM batteries
- Redundant A/C raw water pumps plumbed in line
- Centralized Sea chest system for raw water components
- Oil change system with Aft deck discharge for remote filling and emptying of engines, transmissions, and generators
- Sidepower 20HP 48V Bow and Stern thrusters
- Seatorque Fluid Filled Shaft System
- Yacht Controller remote vessel control system
- CMC electric Stabilizers (at rest capability)
- Multi zone chilled water A/C
- Fiberglass fuel tanks with sight gauges, sump and clean out ports
- Dual Shift-on-the-fly Racor primary fuel filters for each engine and generator
- (4) High volume engine room blowers
- Fiberglass fresh water, grey, and blackwater tanks with USDA food grade gelcoat
- Color coded piping for fuel, water and hydraulic fluids
- Heavy Duty exhaust system with Hi temp silicone hoses
- Carbon Fiber engine beds
- Heavy-Duty watertight engine room door, with viewing port
- 3-inch-thick lead/foam/vinyl engine room insulation for sound and heat
- Frequency matched engine mounts for best performance
- Bright LED Engine Room Lights
- Secondary/emergency diaphragm bilge pump to aft end of engine room and aft of crew cabin

Exclusions

Seller's personal items

No Dinghy is included with the yacht

Disclaimer

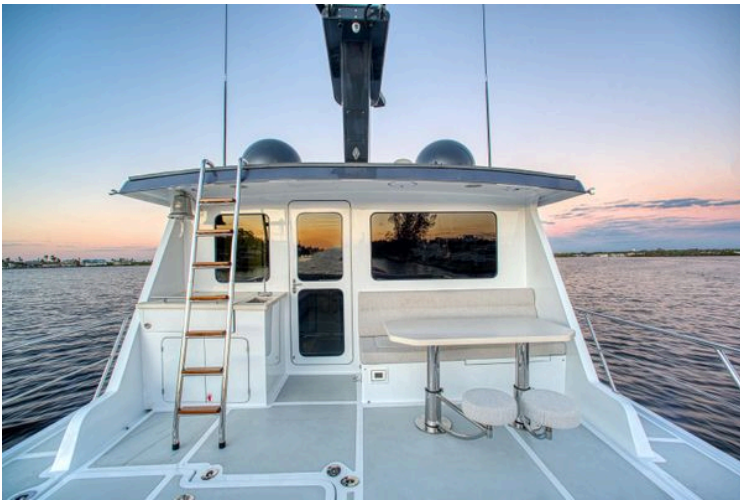
The Company offers the details of this vessel in good faith but cannot guarantee or warrant the accuracy of this information nor warrant the condition of the vessel. A buyer should instruct his agents, or his surveyors, to investigate such details as the buyer desires validated. This vessel is offered subject to prior sale, price change, or withdrawal without notice.



2023 Marlow Explorer 70E-CB yacht with outdoor seating, docked under a cloudy sky.



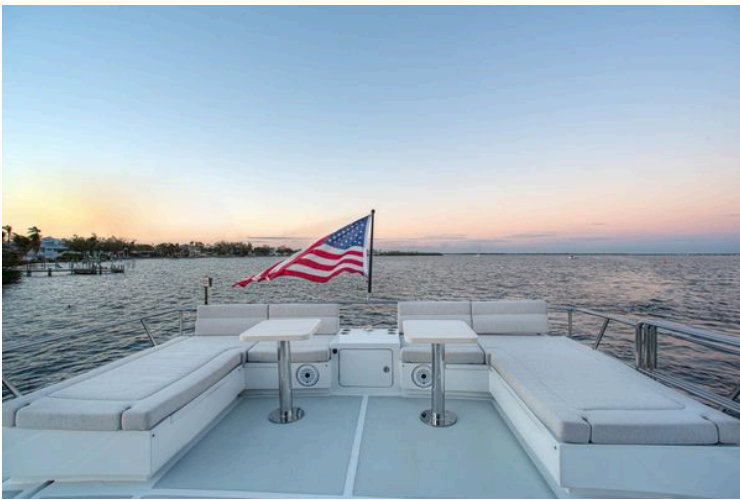
2023 Marlow Explorer 70E-CB yacht deck with seating, table, and scenic water view at sunset.



2023 Marlow Explorer 70E-CB yacht deck with seating, ladder, and sunset view.



Luxurious 2023 Marlow Explorer 70E-CB yacht deck with ocean view at sunset.



Upper Deck



2023 Marlow Explorer 70E-CB yacht on a serene waterway under a colorful sky.



Salon Looking Forward



Salon Looking Aft



Luxurious interior of 2023 Marlow Explorer 70E-CB yacht with elegant seating and wooden flooring.



Luxurious interior of 2023 Marlow Explorer 70E-CB yacht with elegant seating and wooden table.



Luxurious interior of 2023 Marlow Explorer 70E-CB yacht with elegant seating and wooden flooring.



Luxurious kitchen interior of 2023 Marlow Explorer 70E-CB yacht with modern appliances.



Luxurious kitchen interior of 2023 Marlow Explorer 70E-CB yacht with marble countertops.



Luxurious kitchen interior of 2023 Marlow Explorer 70E-CB yacht with modern appliances and ocean view.



Luxurious interior of 2023 Marlow Explorer 70E-CB yacht with elegant dining area.



Luxurious interior of 2023 Marlow Explorer 70E-CB yacht with elegant dining area.



Master Looking Port



Master Looking Stbd



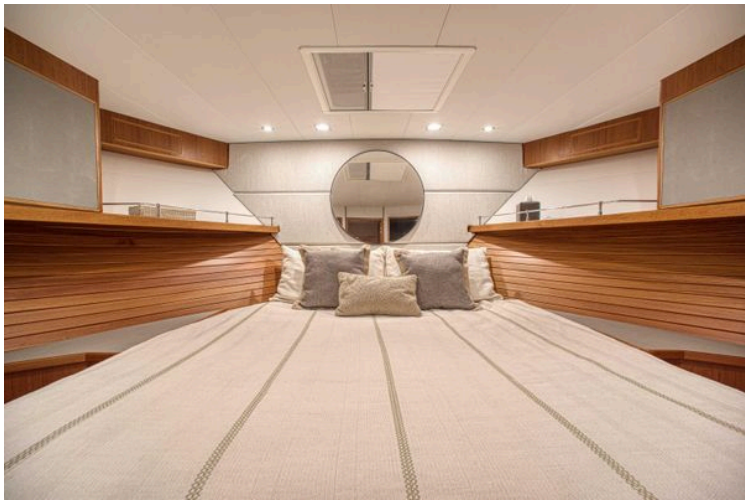
Luxurious bathroom in 2023 Marlow Explorer 70E-CB yacht with dual sinks and modern fixtures.



Luxurious bathroom in 2023 Marlow Explorer 70E-CB yacht with dual sinks and modern shower.



Lower Crew Head



VIP Stateroom



Vip Stateroom



Starboard Guest



Starboard Guest Head



Luxurious bathroom in 2023 Marlow Explorer 70E-CB yacht with modern fixtures and glass shower.



Command Bridge Helm



2023 Marlow Explorer 70E-CB helm with advanced navigation systems and luxurious seating.



Elegant dining area in 2023 Marlow Explorer 70E-CB yacht with wooden table and cushioned seating.



2023 Marlow Explorer 70E-CB yacht interior with helm, seating, and table.



2023 Marlow Explorer 70E-CB interior with wood paneling and cozy seating area.



Luxurious bathroom in 2023 Marlow Explorer 70E-CB yacht with modern fixtures and elegant design.



Lower Crew Lounge



Lower Crew



Interior of 2023 Marlow Explorer 70E-CB yacht, featuring cozy cabins and modern design.



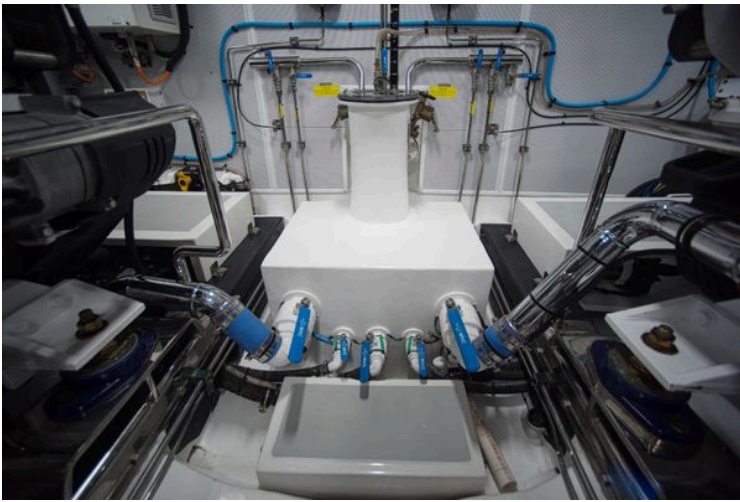
Engine room of 2023 Marlow Explorer 70E-CB yacht, showcasing advanced machinery and equipment.



Engine room of 2023 Marlow Explorer 70E-CB yacht, showcasing advanced machinery and equipment.



Engine room of 2023 Marlow Explorer 70E-CB yacht, showcasing advanced machinery and components.



Sea Chest



Fuel System



Engine room of 2023 Marlow Explorer 70E-CB yacht, showcasing advanced machinery and equipment.



Water Maker



Engine room of 2023 Marlow Explorer 70E-CB yacht, featuring modern equipment and storage.



Server rack with network equipment and cables on a Marlow Explorer 70E-CB, 2023 model.



Audio-visual equipment rack inside 2023 Marlow Explorer 70E-CB yacht.



Water Maker