

97 ft 2013 Marlow Explorer Enclosed Bridge (CB), PIVOT

\$3,250,000

Hobe Sound, FL



Boat Details

Make:	Marlow	Class:	Motor Yacht	Guest Heads:	5
Model:	Explorer Enclosed Bridge (CB)	Hull Material:	Fiberglass	Fuel Type:	Diesel
Year:	2013	Beam:	21 ft 6 in	Max Draft:	5 ft 4 in
Price:	\$3,250,000	Name:	PIVOT		
Condition:	Used	Guest Cabins:	6		

Description

Marlow Marine Sales, Inc., Snead Island, Florida, United States



Tel: **941-729-3370** Fax: **941-729-4955**

Exceptional opportunity to purchase this 97E, currently the only one on the market. Incredible layout with all new interior design makes this yacht feel like a beach house inside. Niaad and Seakeeper stabilization along with the velocijet designed keel and struts bring incredible stability, economical performance and comfort. Vinylester construction by Marlow eliminates osmosis blistering and delivers a strong quiet ride. This is just some of the engineering strides that make Marlow an excellent choice.

- 6 stateroom layout that sleeps 14 plus accommodations for 4 crew aft.
- With 5000 gallon capacity this 97E has a long range capability at slower speeds and can low cruise at 20kn in comfort.

Interior layout drawing from Marlow on the last picture is a different style Salon than "Pivot"

Information & Features

Caterpillar C-32 (Engine 1)

Engine Type: **Inboard** Power: **1800 hp**
Fuel Type: **Diesel**
Engine Hours: **1900**

Caterpillar C-32 (Engine 2)

Engine Type: **Inboard** Power: **1800 hp**
Fuel Type: **Diesel**
Engine Hours: **1900**

Dimensions

LOA: **97 ft**
Beam: **21 ft 6 in**
Max Draft: **5 ft 4 in**

Tanks

Fuel: **5,000 gal**
Fresh Water: **520 gal**

Accommodations

Guest Cabins: **6**
Guest Heads: **5**

Engine Room

- C32 cat 1800 hp with 1900 hrs (just received 1000 hr service) 38kw northern lights gen sets.
- 3 water chillers marine air 180,000 btu with frequency drives.
- Racor filters
- Fuel transfer pumps.
- Marlow sea chests
- Seatorque BOSS(tm) oil bath shaft system just serviced and all up to maintenance including roller bearings and seal replacement (2024).
- Small work bench and vice for repairs

Salon

Aft deck entry to the bright and beautiful salon with plenty of natural light from the windows fore and aft. Teak and Holly floor throughout on this level. Large U shaped couch to port with pop up tv and cabinetry to starboard, *CONTROL4 entertainment system throughout with rack in salon.

Dining Area

Just forward of the salon is the dining table with loads of custom cabinets for dinnerware and additional storage with seating up to 10

Galley

Continuing forward and to port is the large galley full kitchen with dishwasher.

- Subzero fridge
- Fisher Payel dishwasher
- Dacor cooktop
- Garbage disposal

Master Suite

On the forward end of the mid deck is the master suite with 270 degrees windows for exceptional views while on cruise at anchor or in slip. A king sized bed is center. TV aft with a side sofa and make up table. Huge master bath aft of bulkhead.

Lower Deck

Down the stairs to starboard leads to the 5 other large staterooms.

Immediately to starboard is the ships washer and dryer, also in the companion way is a folding area with an additional sink and microwave.

Aft Stateroom

- 2 Queen berths with a full beam layout
- Smart TV
- Lots of storage
- Large head/shower.

VIP Stateroom

Just forward and to port, is the 3/4 beam VIP Stateroom with a King berth.

- Ample storage and cabinetry
- TV
- Large head and shower

Starboard and Port Staterooms

Starboard guest room with over and under bunks.

Port side stateroom with a lower full and an upper cross bunk with full head and shower lots of cabinetry and storage.

Forward Stateroom

All the way forward is the 5th stateroom on this level with a queen sized berth with additional side bunks for use if extra sleeping space is needed. Full head and shower aft. Lots of closet space and cabinetry.

Aft Crew Area

Two staterooms are located below the aft deck. Entrance can be via the side door or through the aft air door to the machinery space. (Crew Stateroom not pictured)

Aft machinery space contains shore cords, Eskimo ice machine, shore power transformers, seakeeper and stern thruster. Machine space air conditioning.

Forward of the crew area is a watertight door to the engine room.

Aft Deck

A large teak table with bench seating aft and teak chairs around forward. Seating for 8 plus. The stairwell on the port Side brings you to the upper deck and the command bridge. Aft set of docking controls to stb side.

Forward Deck

Includes ample cushioned seating and lounge area with center ladder to Portuguese bridge and command bridge.

Enclosed Bridge

- Single STIDD helm chair
- Center. Double STIDD chair to port
- Bow and stern thruster controls
- CAT controls and full gauge
- Maritron ships monitor system.
- 4 garmin displays
- Simrad auto pilot
- Icom vhf X2
- Ghost tracking system
- Niaad controls
- Seakeeper controls
- Kvh system
- New Starlink system

Upper Aft Deck

A large upper deck for entertainment including a full oven and gas grill. Able to accommodate large groups. Ample seating around the teak table and additional seating aft.

Portuguese walk around the enclosed bridge with additional lounge seating forward. (New soft goods 2023) On the aft upper deck is a Airex 2200 lb Davit and removable chocks. 2012 Boston Whaler 150SS with Yamaha included.

Additional Remarks

If you are looking for a motor yacht capable of extended travel and efficiency look no further, come see this awesome 97E and make your offer today.

Disclaimer

The Company offers the details of this vessel in good faith but cannot guarantee or warrant the accuracy of this information nor warrant the condition of the vessel. A buyer should instruct his agents, or his surveyors, to investigate such details as the buyer desires validated. This vessel is offered subject to prior sale, price change, or withdrawal without notice.



2013 Marlow Explorer Enclosed Bridge (CB) yacht deck with scenic water view.



2013 Marlow Explorer Enclosed Bridge (CB) yacht with spacious deck and luxurious seating.



2013 Marlow Explorer Enclosed Bridge (CB) with striped sun loungers on deck.



2013 Marlow Explorer Enclosed Bridge (CB) yacht deck with crane and tender.



2013 Marlow Explorer Enclosed Bridge yacht deck with seating and ocean view.



2013 Marlow Explorer Enclosed Bridge CB yacht deck with outdoor kitchen and dining area.



Outdoor kitchen on 2013 Marlow Explorer Enclosed Bridge yacht with grill and oven.



Outdoor kitchen on 2013 Marlow Explorer Enclosed Bridge yacht with grill, fridge, and storage.



2013 Marlow Explorer Enclosed Bridge CB yacht with outdoor seating and dining area.



2013 Marlow Explorer Enclosed Bridge CB yacht with outdoor dining area and waterfront view.



2013 Marlow Explorer Enclosed Bridge yacht deck with dining area and waterfront view.



2013 Marlow Explorer Enclosed Bridge CB yacht with outdoor dining area.



2013 Marlow Explorer Enclosed Bridge (CB) yacht interior with dining area and outdoor grill.



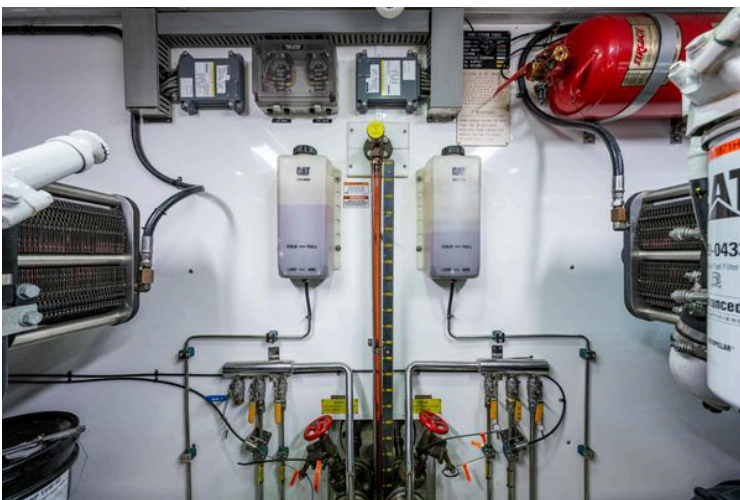
Engine room of a 2013 Marlow Explorer Enclosed Bridge (CB) yacht.



Engine room of a 2013 Marlow Explorer Enclosed Bridge (CB) yacht.



Engine room of a 2013 Marlow Explorer Enclosed Bridge (CB) yacht.



Engine room of 2013 Marlow Explorer Enclosed Bridge (CB) yacht, featuring CAT machinery and fire suppression system.



Engine room of a 2013 Marlow Explorer Enclosed Bridge (CB) yacht.



Engine room of a 2013 Marlow Explorer Enclosed Bridge (CB) yacht with Caterpillar engines.



Engine room of a 2013 Marlow Explorer Enclosed Bridge (CB) yacht.



2013 Marlow Explorer Enclosed Bridge (CB) yacht docked at marina.



2013 Marlow Explorer Enclosed Bridge (CB) helm with advanced navigation systems and wooden steering wheel.



2013 Marlow Explorer Enclosed Bridge (CB) helm with advanced navigation systems and blue captain's chairs.



2013 Marlow Explorer Enclosed Bridge (CB) with blue captain's chair and wooden interior.



2013 Marlow Explorer Enclosed Bridge (CB) helm with blue captain's chair and navigation equipment.



Interior of 2013 Marlow Explorer Enclosed Bridge (CB) yacht with wooden finishes and large windows.



2013 Marlow Explorer Enclosed Bridge CB interior with blue sofa and helm station.



Spacious interior of 2013 Marlow Explorer Enclosed Bridge yacht with comfortable seating.



Interior of 2013 Marlow Explorer Enclosed Bridge (CB) with blue sofa and patterned ottoman.



2013 Marlow Explorer Enclosed Bridge CB yacht kitchen with wooden cabinetry and modern appliances.



2013 Marlow Explorer Enclosed Bridge CB yacht kitchen with stainless steel appliances and wooden cabinetry.



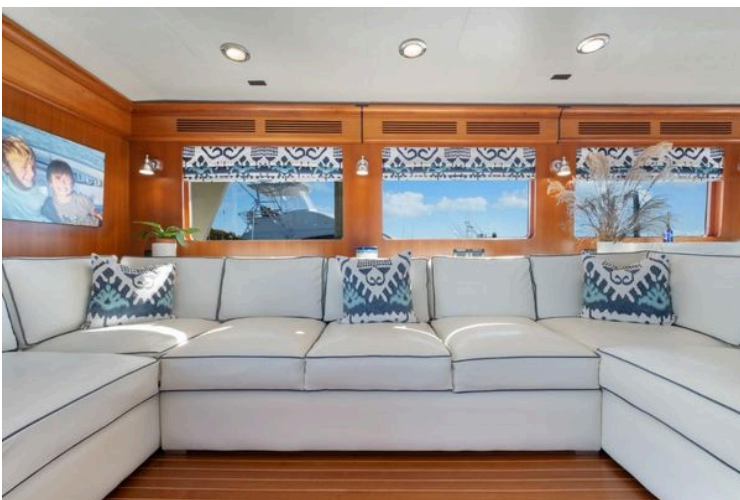
2013 Marlow Explorer Enclosed Bridge (CB) yacht kitchen with wooden cabinetry and modern appliances.



2013 Marlow Explorer Enclosed Bridge (CB) yacht kitchen with wooden cabinetry, microwave, and appliances.



2013 Marlow Explorer Enclosed Bridge (CB) yacht kitchen with wooden cabinetry and modern appliances.



Luxurious interior of 2013 Marlow Explorer Enclosed Bridge yacht with white sectional sofa.



Luxurious interior of 2013 Marlow Explorer Enclosed Bridge (CB) yacht with white sectional sofa.



Luxurious interior of 2013 Marlow Explorer Enclosed Bridge yacht with white sofas and wooden flooring.



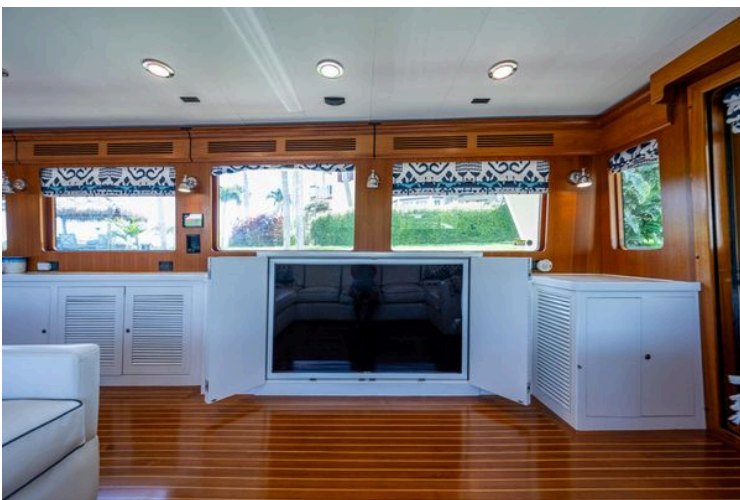
Luxurious interior of 2013 Marlow Explorer Enclosed Bridge yacht with white sectional sofa.



Interior of 2013 Marlow Explorer Enclosed Bridge (CB) with wooden cabinetry and patterned curtains.



Luxurious interior of 2013 Marlow Explorer Enclosed Bridge yacht with white seating and wooden accents.



Interior of 2013 Marlow Explorer Enclosed Bridge (CB) with wood paneling and built-in TV.



Luxurious interior of 2013 Marlow Explorer Enclosed Bridge yacht with white sofas and wooden flooring.



Luxurious interior of 2013 Marlow Explorer Enclosed Bridge yacht with modern dining area.



Luxurious interior of 2013 Marlow Explorer Enclosed Bridge (CB) yacht with modern dining area.



Luxurious interior of 2013 Marlow Explorer Enclosed Bridge yacht with modern dining area.







