

70 ft 2011 Marlow Explorer 70E, Rode Runner II

US\$1,875,000

Palmetto, Florida, United States



Boat Details

Make:	Marlow	Class:	Motor Yacht	Guest Heads:	4
Model:	Explorer 70E	Hull Material:	Composite	Fuel Type:	Diesel
Year:	2011	Beam:	18 ft 4 in	Max Speed:	25 kn
Length:	70 ft	Boat Location:	Palmetto, Florida, United States		
Price:	US\$1,875,000	Name:	Rode Runner II		
Condition:	Used	Guest Cabins:	4		



Marlow Sales Department | Marlow Marine Sales, Inc.

Marlow Marine Sales, Inc., Snead Island, Florida, United States

Tel: **941-729-3370** Fax: **941-729-4955**

sales@marlowmarine.com

www.yachtworld.com/marlowmarine

Description

Rode Runner II is ready to take her crew on extended cruises as well as coastal adventures. Her semi-enclosed flybridge allows excellent visibility with maximum comfort for captain, crew, and guests. The twin C-18 1015HP engines provide economical cruising at 8-10 knots and she can comfortably cruise at 20 knots. Demonstrating speed and economy, Rode Runner II provides a secure ride across the Gulf Stream as well as bays and coastal waterways. In 2019, the owners upgraded the Yacht Controller which allows for effortless and safe docking under all conditions. The cross ventilation provided by her semi-enclosed bridge and available air conditioning makes warm weather cruising a pleasure. Vinyl side panels are easily secured when needed.

At dock or anchor she provides a warm and inviting interior for a cruising couple and their guests. The heart of the interior is her gracious galley with upgraded appliances and spacious granite countertop that allow the chef to prepare and serve with ease. The three staterooms each with their own en-suite and the welcoming main salon are elegant and comfortable.

With her generous storage, Rode Runner II is ready for a long cruise to a tropical destination or a day trip to a favorite anchorage. Bring your cruising dreams and Rode Runner II will make them a reality.

Information & Features

Caterpillar C-18 (Engine 1)

Engine Type:	Inboard	Power:	1015 hp
Fuel Type:	Diesel		
Engine Hours:	3680		

Caterpillar C-18 (Engine 2)

Engine Type:	Inboard	Power:	1015 hp
Fuel Type:	Diesel		
Engine Hours:	3685		

Dimensions

LOA:	74 ft 10 in
Beam:	18 ft 4 in
Min Draft:	4 ft 6 in

Weights

Displacement:	89,000 lb
---------------	------------------

Speed

Cruising Speed:	21 kn
Max Speed:	25 kn

Tanks

Fuel:	1 x 1,900 gal
Fresh Water:	1 x 450 gal
Holding:	1 x 120 gal

Accommodations

Guest Cabins: **4**

Guest Heads: **4**

Other

Flag Of Registry: **United States**

Designer: **Marlow Design Team**

Builder: **Marlow Yachts**

Notable Upgrades and Recent Services

- Twin CAT C-18 Engines 1015HP Port 3680 Stbd 3685 - Twin Onan Generators 21.5kW Port 3720 Stbd 3720 - Naiad Fin Stabilizers - Watermaker - Semi-Enclosed Flybridge with high-capacity A/C - SidePower Bow Thruster (20HP) - SidePower Stern Thruster (20HP) - Upgraded SubZero refrigerator/freezer combo units - Salon SubZero Wine Cooler - Salon SubZero Refrigerator with Ice maker - Flybridge SubZero Refrigerator with Ice Maker - Upgraded TVs throughout - Custom Designed Interior - Bose Sound System - Shark Gray AwlGrip Painted Hull (2018) - Twin Garmin 20" Screens in Pilothouse (2019) - Twin Garmin 18" Screens in Pilothouse (2019) - Twin Garmin Radar (2019) - All NEW hydraulic davit lines (2020) - Salon sconces (2020) - 500 feet of US manufactured 5/8 chain: 200' port, 300' stbd (2020) - Underwater lights (2020) - Yacht Controller (2020) - 13' Highfield Deluxe Sport 390 tender with 50HP Yamaha (2020) - LED lights throughout - Exterior canvas (2020) - Upper aft deck awning with carbon fiber support poles (2020) - Fisher & Paykel 4 burner Induction Cooktop (2019) - Bosch Oven (2019) - Fisher & Paykel Dishwasher (2019) - Pneumatic transom door opening system - AGM Batteries (2020) - XM radio/Bluetooth

Vessel Walkthrough

Beautifully appointed Marlow Explorer 70E-Semi Enclosed Bridge with three staterooms and three heads. The large Salon is entered from the protected cockpit deck. Up three steps to Pilothouse with superb country kitchen, dinette, port and starboard doors to weather decks and staircases to Flybridge and Staterooms. Down forward staircase to amidship Master Stateroom, forward VIP Stateroom, port Guest Stateroom. The stand-up Engine Room and Crew Quarters/Lazarette are aft and entered from the cockpit or through the transom door. The upper semi-enclosed bridge is accessed forward from a staircase from the Pilothouse and from a staircase from the Aft Deck to the Boat Deck. The Boat Deck serves as a sun deck when the tender is launched. This Flybridge boat deck includes new privacy/safety screen panels on outside rails and attractive sun awning covering entire top sun deck. There are wide protected sidedecks, a Portuguese bridge and a high foredeck. RODE RUNNER II was built with elegant, satin-finished grain-matched teak interior, trim and furnishings and teak and holly cabin soles. The vessel's climate control system uses a reverse-cycle chilled/heated closed glycol/water loop system, quietly and gently delivering proper temperature air throughout the vessel.

Accommodations

There are three staterooms and three heads, plus crew quarters with large bed and en suite head and seating area for relaxing when off duty. The midship Master Stateroom has the highly desirable his/hers twin head with central large shower arrangement. The forward VIP Stateroom has an en suite head with separate shower and an additional door to the companionway that allows the head to be used as the day head. The port Guest Stateroom offers comfortable side by side twin beds and an en suite head with separate walk-in shower. Extensive storage areas are provided throughout the vessel. A close inspection of the enclosed storage areas shows that the fine joinery is continued into the fully lined and perfectly finished cabinetry. Spaces behind appliances are finished to the same standards as the visible accommodations area.

Salon

The salon is spacious, yet cozy. The open view to the windshield from the aft doors make it feel like a much larger vessel. The oversized tinted windows let in just the right amount of light and have custom-made roman shades for added privacy. There are twin half moon shaped built-in settees to port and starboard with an entertainment center with a large pop-up LCD TV and a Bose Surround Sound home theater system serving the entire vessel. A full-size bar is on the port aft salon area. An additional barrel chair with an ottoman (with storage) is to starboard aft with ample storage throughout. Two settees with storage 43" Samsung pop-up TV Wet bar, hidden sink Sub-Zero wine cooler Sub-Zero under counter refrigerator with icemaker Teak and Holly cabin sole over fiberglass composite structure 24V Italian and Danish lighting and 110V mood lighting Extensive storage cabinetry Light cream and brown granite bar top Overhead Teak handrail Quiet, gentle air conditioning

Galley/Dining

The Country Kitchen is centrally located on the main deck forward and up 3 steps from the salon. An opening under the aft cabinets allows visibility through to the salon and cockpit deck. The galley counters are light colored with bull nosed edges and the under-mounted sink is on the forward side of the galley counter so you are looking out the front windows of the yacht when standing at the sink. The Fisher & Paykel Dishwasher is to port of the sink, undercounter. The Fisher & Paykel cooktop and Bosch Oven are on the starboard side of the counter and has removable stainless steel sea rails to keep pots from moving about on the smooth glass cook top. The SubZero refrigerators and freezers are on the aft end of the galley next to the cook top. The galley has generous cabinet space with louvered doors to keep the cabinets well ventilated. The raised dining area is forward to port next to the lower helm. There is a teak table that slides in and out for comfortable dining. SubZero refrigerator/freezer drawers Fisher & Paykel Induction cooktop Bosch Oven Fisher & Paykel Dishwasher Light cream and brown Granite countertops Storage cabinets and drawers Louvered upper cabinets Single large stainless sink Mood light under counters Grohe faucet Drinking water faucet, separate supply Exhaust blower over cooktop Cutting boards/sink covers Appliance storage locker in countertop aft

Master Stateroom

The full beam owner's suite is amidship and is separated from the engine room by insulated bulkheads and the FRP 1900 gallon fuel tank. The king-sized walk around bed is center line and with nightstands on each side of the bed with beveled glass mirrors and reading lamps above. The his and hers heads are aft of the bedroom and have an adjoining shower, 2 VacuFlush toilets along with his and hers counter tops and sinks. There are five hanging lockers and ample drawer space. The TV is on the forward bulkhead and six opening port lights with screens let in plenty of light and air. King sized berth Satellite TV w/Receiver Large flat screen TV Beautiful bow front chest of drawers Cedar lined hanging lockers Bose CD/Stereo & Sound System Linen closet Six Heavy duty 316L portlights with screens for cross ventilation Two Large heads with large centered stall shower Grohe sink and Grohe faucets in each head

VIP Stateroom

The VIP Suite is forward. The Stateroom has two large hanging lockers and six large storage drawers. The head is on the starboard side and has a full-size shower. Two opening screened hatches on the ceiling of the stateroom provide a light and airy feeling. Queen size bed Cedar lined storage lockers with auto lighting Reading lamps Mood lighting Bose Home Theater Stereo with speakers Six Large under bed drawers Four Large louvered lockers 15" LCD TV Deck hatch for access to bilge and bow thruster VIP head has additional companionway door to serve port stateroom and as day head Cream granite counter Grohe sink and faucet Beveled mirror

Port Guest Stateroom

The guest stateroom has twin side by side beds with a wide nightstand with storage drawers between them. Under each bed there are large storage drawers. Forward by the door to the head is a large cedar lined hanging locker. (2) Twin berths side by side with reading light Private head with separate stall shower Louvered cedar-lined hanging locker with auto lighting 15" LCD TV Drawers, cabinets and bookshelves Separate Bose control Rope lighting Two opening portlights

Crew Quarters

The air-conditioned full beam crew quarters are aft of the engine room and feature a double berth, settee to port, nightstand, hanging lockers and TV. The crew has their own en suite head with shower. There is a separate entrance from the cockpit so the crew does not need to enter the salon to access their quarters. There is also a full height transom door that provides access while in port. This door takes you through the storage area and crew quarters to the engine room.

Aft Deck/Cockpit

The cockpit has a covered teak deck and a built-in seating area. This yacht has an extended boat deck that provides full overhead protection from rain and sun in the cockpit. The salon door is a large double door that opens wide to bring the cockpit and salon together. Port and starboard transom doors lead to the oversize swim platform. The swim platform leads to a centerline watertight transom door accessing the engine room and crew quarters. Built in seating with cushions Molded FRP stairway up to flybridge and boat deck. Twin transom doors with steps from cockpit down to the integrated swim platform. Aft deck speakers integrated to the flybridge speakers Crew quarters access hatch Courtesy lights Camera

Semi-Enclosed Flybridge

The air-conditioned semi enclosed bridge allows for all-weather cruising. Sitting at the helm provides a 360 degree view. Well equipped with twin Stidd helm chairs, a refrigerator, sink combo cabinet and a large, raised L-settee with High Gloss Teak table, she has all the comforts of a true cruising yacht. Aft of the flybridge is the boat deck with 1700-pound telescoping davit, Wolfe grill, removable safety rails, sliding stairway hatch cover, aft-view camera, ships bell, storage and a large non-skid deck that serves as a sunbathing area when the dinghy is launched.

Deck & Hull

Highly polished, finest quality 316L stainless steel is used throughout every Marlow Explorer. RODE RUNNER II has a beautiful and functional oval handrail for more secure gripping and more substantial appearance. The ship's bell, door handles and steering wheel centers are all laser engraved with the Marlow Explorer logo. The water fills are self-keyed for convenience and practicality and located at waist height in the main deck. The main deck includes a Portuguese bridge, teak decks and ship quality ground tackle. Fuel and water fills are accessible from both sides of the yacht. The shore power and water connections are at both the bow and stern. Molded FRP flush window frames Proprietary High Pressure lamination system Engineered sandwich construction throughout Laminated and tempered window glass Dupont Kevlar lamination fabrics to resist hull penetration Velocijet Strut Keels protect shaft propellers and rudder from grounding Side-power 20HP Bow Thruster Side-power 20HP Stern Thruster Non-skid FRP decks, main deck forward and boat deck Screens on all opening windows, hatches and ports Sandwich bulkhead, floors, stringers FRP construction Deck Lights 24V Covered Burmese Teak aft and side weather decks Red night lights in Fly Bridge & Pilothouse Heavy duty concealed swim ladder in swim platform Six Heavy duty low profile 316L stainless steel Hatches Owner aboard logo lighting Bulwark doors and gates P&S Heavy duty 316L solid stainless rubrail FRP stairway with teak steps and stainless steel, cockpit to bridge Portuguese Bridge deck storage lockers Cockpit deck lockers, FRP Engine room access from cockpit Teak coaming Oval Stainless Steel Handrails forward Sliding doors, P&S pilothouse, aft salon with lock FRP bow pulpit with stainless steel anchor rollers Transom door FRP swim platform with teak inlay Underwater lights Three removable N-Rails on swim platform for safety Removable safety rails on Boat Deck NEW 500 feet of US manufactured 5/8 chain: 200' port, 300' stbd (2020)

Pilothouse

Teak and holly cabin sole 24V Italian and Danish lighting Flush FRP articulating pilothouse doors port and starboard Teak valances with mood light S/S post see-through stairs to bridge Lighted stairway to forward cabins with recessed handrail Stereo speakers

Engines & Mechanical

The engine room has full standing headroom and good access to every piece of equipment and machinery. It is accessed through an aft watertight door with a viewing port. Air conditioned and with cables neatly bundled, valves clearly labeled, plumbing color coded, gauges at eye level and plenty of light to work make this an ideal "boys toy room". The twin sea chests are port and starboard aft in the engine room and provide sea water to the engines, generator, air-conditioning, and all the other items on the yacht that need sea water. Each item has it's own shut-off valve for servicing. The 1900 gallon fuel tank is just forward of the forward engine room bulkhead. This is the center of flotation of the yacht so your running angle will not change as your fuel level changes. The fuel tank also provides an additional layer of soundproofing between the engines and the cabins forward. Twin 1015HP Caterpillar C-18 diesel engines (Port 3620 Stbd 3685) Upper and Lower control stations with full CAT display Wireless Yacht Controller remote control (gears, throttle, thrusters, and windless) Two 21.5KW Onan diesel generators in custom sound shields with Lexan inspection ports (Portside 3720, Starboard 3720 hrs) Naiad stabilizers Water maker Oil filled shaft system and thrust bearing Drive coupling covers, FRP Soft engine mounts Proprietary sea chest water intake system Sea Chest inspection and cleanout port Re-designed Sea Chest provides enhanced sea water flow to mechanical systems with oversized sea strainers within the engine room. This eliminates the need for frequent underwater cleaning. PJR pressure sea water system Seacocks on all seawater supply lines 4KW Inverter with Link 1000 monitor AGM batteries PJR drinking water pump Pressure fresh water faucet with hose PSR pressure fresh water system Water heaters, 30 gallon and 19 gallon stainless steel Proprietary fiberglass thermal and sound insulation blanket 1900 gallon FRP fuel tank with sight gauge and simplified fuel management system Engine room lead/foam sound insulation Sea water pump Racor fuel water separators, dual with gauge FRP holding tanks - 120g black / 120g gray Engine room blowers 220V high volume Dockside and overboard black water discharge Engine isolation switches Common drainage system Engine-Generator-Gears oil change system Color coded copper piping for fuel, water and hydraulic system Heavy duty manual bilge pump Under water exhaust system High water bilge alarm in engine room 24V overhead lights, waterproof Heavy duty vacuum pumps for gray and black water Smooth finish gelcoated bilges HD watertight engine room door with inspection port Heavy Duty exhaust hose clamps High Temperature silicone exhaust hoses Common drainage system for all discharges Proprietary Air inlet system, baffled DC outlet AC outlet Two 3700 GPH bilge pumps with auto & manual switch Varnished teak bilge grating 120V fluorescent lighting in engine room served from Inverter Camera

Electronics

PILOT HOUSE ELECTRONICS Twin Garmin Screens Garmin High-Definition Radar (2) CAT engine monitors (1) Acer screen monitor Trim tab control with LED display Furuno nav pilot auto pilot Furuno digital depth and speed display Furuno wind speed and direction indicator ICOM VHF Radios Emergency steering joystick Sanshin HR-1012 search light Yacht Controller wireless control Ritchie Compass FLY BRIDGE ELECTRONICS Twin Garmin Screens (2) CAT marine monitors Trim tab control with LED display Furuno nav pilot auto pilot Furuno digital depth and speed display Furuno wind speed and direction indicator ICOM VHF Radios Sanshin HR-1012 search light Ritchie Compass

Exterior Hardware & Fittings

Heavy duty stainless steel oval handrails on the foredeck Proprietary stanchion base mounting system 1.375" Stainless steel stanchions main deck Stainless steel cleats & hawse holes Stainless steel rudders Velocijet Strut keels Aquamet 22 propeller shafting Stainless steel Portholes heavy duty 316L stainless steel Custom CNC cut Nibral propellers Fresh water washdown, cockpit Bronze through-hull fittings Spotlight with remote at each helm station Custom stainless anchor light and pennant bracket Windlass - Lofrans Titan B with local & remote controls at helm 110-pound Bruce anchor 60-pound plow anchor Hidden fueling ports with anti-spill catch basin Teak steering wheel Super Duty custom trim tabs Teak bow and stern staffs Sea water washdown, forward deck, high volume Exalto heavy duty windshield wipers and washers Two Stidd Helm seats on fly bridge Two Stidd Helm seats in Pilothouse Bose Home Theater system Stainless steel N-rails on swim platform

Exclusions

Owner's personal items.

DISCLAIMER

The Company offers the details of this vessel in good faith but cannot guarantee or warrant the accuracy of this information nor warrant the condition of the vessel. A buyer should instruct his agents, or his surveyors, to investigate such details as the buyer desires validated. This vessel is offered subject to prior sale, price change, or withdrawal without notice.



Stairs to Boat Deck



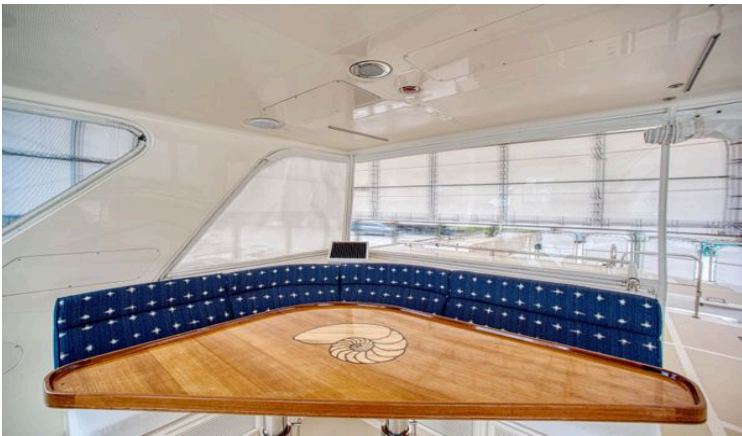
Cockpit Table



Upper Helm



Upper Helm



FB Teak Table



FB Storage, Sink, Grill



Aft Salon Doors and Crew Access



Salon Looking Forward



Salon Looking Aft



Salon



Salon Desk TV on Lift



Pilothouse and Galley



Galley



Pilothouse Table



Lower Helm



Lower Helm



Galley Looking Aft



Galley



Master Looking Aft



Master Looking Aft



Master Head



Master Shower



Master King Bed



VIP



VIP 2



VIP Head



Port Guest Bunks



Port Guest Head



Crew Settee



Crew Bunk



Crew Head



Crew



Engine Room Door



Engine Room



Stbd Engine



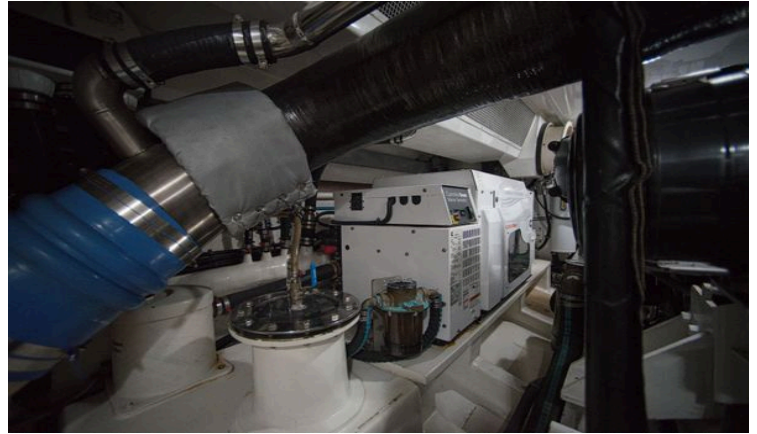
Water Maker



Fire Bottle and Fans



Port Sea Chest Below



Port Generator

