

48 ft 2021 Sabre Salon Express 48, El Cee

US\$1,495,000

Bradenton, Florida, United States



Boat Details

Make:	Sabre	Class:	Downeast	Fuel Type:	Diesel
Model:	Salon Express 48	Hull Material:	Fiberglass	Max Draft:	4 ft 1 in
Year:	2021	Beam:	15 ft 4 in		
Length:	48 ft	Boat Location:	Bradenton, Florida, United States		
Price:	US\$1,495,000	Name:	El Cee		
Condition:	Used	Heads:	1		



Marlow Sales Department | Marlow Marine Sales, Inc.

Marlow Marine Sales, Inc., Snead Island, Florida, United States

Tel: 941-729-3370 Fax: 941-729-4955

sales@marlowmarine.com

www.yachtworld.com/marlowmarine

Description

Very clean, one-owner boat with the preferred Volvo Penta IPS 700 engines. She has an easy to use Presto Marine Davit on the swim platform for the 11' 2" Dingy with a Yamaha 25HP Outboard. Delivered through Dimillo's and stored indoors for the winter at Safe Harbor Kittery Point Marina. She has spare props on board and shows better than any southern-based yacht can. Complete with electric cockpit shade and canvas covers for windshields and cockpit cushions.

Volvo extended warranty on engines and pods until June 2026.

Information & Features

Volvo D8 Penta (Engine 1)

Type:	Inboard	Power:	550 hp
Fuel Type:	Diesel		
Hours:	543		

Volvo D8 Penta (Engine 2)

Type:	Inboard	Power:	550 hp
Fuel Type:	Diesel		
Hours:	543		

Dimensions

LOA:	52 ft 3 in	Max Draft:	4 ft 1 in
Beam:	15 ft 4 in	Deadrise At Transom:	14 °
Max Bridge Clearance:	14 ft 2 in		

Weights

Dry Weight:	37,500 lb
-------------	------------------

Tanks

Fuel:	525 gal
Fresh Water:	160 gal
Holding:	70 gal

Accommodations

Heads:	1
--------	----------

Other

Hull Shape:	Semi Displacement
Designer:	Sabre Design Team

Introduction

The 48 Salon Express has a traditional exterior profile that belies her contemporary performance. She cruises at 27 knots and, at wide open throttle, she'll attain more than 32 knots. Pod drives and joystick controls give every owner-operator the confidence to dock her in the most difficult of circumstances, and remarkably low sound levels while underway allow for a more pleasant experience while cruising.

Featuring a standard configuration of two cabins and two heads, the 48 Salon Express is supplemented by a utility space forward of the engine room that can be laid out as additional crew quarters. Designed with our customers in mind, her galley-down layout doesn't compromise on space and light, making food and drink preparation a pure pleasure. Unique to the Sabre 48 design, her master berth and en-suite head have an athwartships orientation, allowing for flat cabin soles on all sides of the spacious island queen.

Hull

- Modified Deep "V" Planing hull design with Volvo IPS 700's
- 14° deadrise at transom and 23° deadrise amidships.
- ISO NPG white gelcoat w/vinylester backup resin.
- Bottom, topsides, and transom VIP resin infused biaxial E-glass with Corecell SAN foam core.
- Stringer system biaxial E-glass with foam core.
- Resin Infused E-glass swim platform with molded-in anti-skid surface.
- Hull side rubbing strakes.
- White PVC rub rail with stainless steel cap.
- Painted (Urethane) double boot top.
- Gold recessed cove stripe.

Deck and Hardtop

- ISO NPG gelcoat.
- VIP resin infused biaxial E-glass with balsa core.
- Molded-in anti-skid deck surfaces.
- Companionway door to port.
- Sliding windows in salon on cabin sides.
- Electric opening window in salon aft bulkhead.
- Hinged access door to side deck at helm.
- Flush, outward opening, transom door with latch.
- Anchor locker with slam latch.
- Large lazarette/engine room access hatch in cockpit sole with compression latches.
- Integrated Sure Shade system over the cockpit.

Deck Hardware

- 1 1/4" Diameter type 316 stainless steel perimeter rail system.
- (6) 12" Stainless steel cleats: two forward, four mid-ship.
- (2) Stainless steel bollard cleats aft
- (2) Stainless 12" cleats on cockpit coaming on centerline
- 10" Stainless steel cleat to starboard of windlass as anchor rode tie off.
- (4) Custom cast stainless steel mid-rail line chocks.
- Custom cast stainless steel skene chocks forward.
- Custom stainless steel bow pulpit with dual anchor roller for 44lb CQR or Delta anchor and "lunch hook".
- Quick anchor windlass, electric rope-chain type
- Teak flagstaff and socket on taffrail.
- Burgee staff on bow pulpit.
- (6) Low Profile stainless steel hatches w/screens.
- (6) Custom stainless steel opening port lights.
- Teak toe rails.
- Teak cabin-side eyebrow.
- Teak table in the cockpit
- Custom cast stainless steel "SABRE" logo
- Raw water washdown system at the bow.
- Kahlenberg Duel chrome air horn

Master Stateroom Amidships

- Island berth athwartship layout with 9" foam mattress and laminated trim.
- Hull side deadlight over headboard.
- Shoji style portlight screen panels.
- Cherry hull ceilings.
- Drawers under berth and in bulkhead aft of berth.
- (2) hanging lockers fore and aft of bed.
- Teak and holly sole.
- Sound deadening soft headliner panels.
- Sliding door to master head compartment.

Electronics / Helm

- Dual Volvo-Garmin 8617 Multi-Function Displays (MFDs) w/ Separate SD Card Readers.
- Garmin GMR 54 Radar.
- Garmin GSD 25 Sonar with Side Scan.
- Airmar Depth Speed Bronze Through Hull.
- Gamin AIS 800 Black Box.
- Garmin GA 28 GPS/Glonass.
- Garmin VHF 315 Radio.
- 8Ft Digital Antenna.
- Garmin GMI 20 Display.
- KVH TrackVision TV5.
- (2) Garmin Fusion MS-AV755 DVD (one in Salon, One in Master).
- Siren 3 vessel monitoring with Door sensor, High Water Sensor, Shore Power Sensor.
- Helm Equipment.
- Hinged access door to starboard side deck.
- Volvo-Penta Autopilot w/ Joystick Driving.
- Twin Lever Shift & Throttle Control (EVC-E) w/ Single Lever & Cruise Control Software.
- Triple windshield wipers w/ multiple speed settings.
- Windshield washers plumbed from the freshwater system.
- Ritchie Compass.
- Switch controls for horn, running lights, anchor light, engine room blowers, & bilge pumps.
- Custom teak steering wheel w/ tilt helm & Sabre logo.
- Twin Stidd N Series helm seats w/ Ultraleather® fabric mounted on a cherry cabinet. Customized to have pedestal for inboard seat so it can rotate to face aft for salon seat.
- NMEA 2000 backbone.

Master Head

- Private access from master stateroom.
- Custom tile in WC and shower sole.
- Glass vessel style sink.
- High gloss finish over solid cherry counter.
- Vanity cabinet below sink.
- Storage outboard.
- Mirror above vanity, cherry-framed.
- Separate shower stall with clear bi-fold enclosure and glass tile accent wall within.
- Electric shower sump pump.
- Opening port to side deck.
- Deck hatch with blind/screen overhead.
- Ventilation blower.
- Stainless steel towel bars.

VIP Forward

- Spacious island berth with 6" mattress and laminated trim.
- Cherry hull ceilings.
- Drawers under berth, A/C return grille beside.
- Storage lockers, drawers, and shelves.
- Teak and holly sole.
- Sound deadening soft headliner panels.
- Private access to forward head and shower.

Main Salon

- "L" settee to starboard, 5" foam cushions, with storage and Sabre tool drawer under.
- High Gloss finished table with hi-low pedestal and angled slide mechanism. Lowers to coffee table height.
- Entertainment unit to port including a flat screen LCD TV 32" on lift with DVD player.
- Sound deadening, soft headliner panels.
- Raised mates L-shaped settee to port of helm.
- Hinged stainless steel door to cockpit.
- Electrically operated window aft of L-settee.
- Deep chart table forward of L-settee seat port.
- Fiddles at nav station.

DISCLAIMER

The Company offers the details of this vessel in good faith but cannot guarantee or warrant the accuracy of this information nor warrant the condition of the vessel. A buyer should instruct his agents, or his surveyors, to investigate such details as the buyer desires validated. This vessel is offered subject to prior sale, price change, or withdrawal without notice.



Helm 1



Helm 2



Salon Port Side



Port Side Salon



Galley 1



Galley 2



Galley 3



Amidships Master



Master Looking out



Master Head



VIP Berth

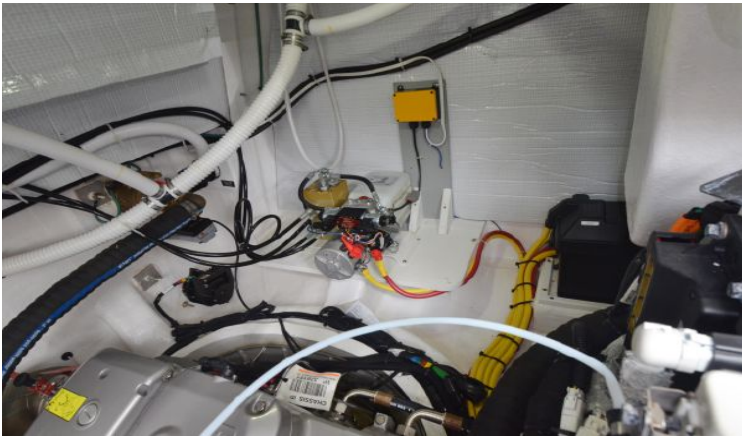




Stbd Pod



Battery Chargers



AC Compressors



